

Archive Notes

The file below this sheet includes aerial photos of Block Island, Rhode Island. The sticky notes denote sites used in the following paper, or (arrows) isolated trees and tree plantations used to assess potential local (on-island) pollen contributors). The photos may be of use to researchers working on Block Island; otherwise they can be disposed of.

Jackson, S.T., and P.W. Dunwiddie. 1992. Pollen dispersal and representation on an offshore island. *New Phytologist* 122:187-202.

S.T. Jackson 19 IV 22

ATTN: Mr. Steve Jackson

TERMS	OUR ORDER NO.	SHIP VIA	DATE SHIPPED	INVOICE DATE	INVOICE NUMBER
NET 30 DAYS	Z3507	F&X	5/10/90		
QUANTITY	DESCRIPTION			UNIT PRICE	TOTAL PRICE
	<p>Providing 34 contact aerial photographs of your area of interest in Block Island, RI per your p.o. number P916503, dated 5/3/90, of photo number 145-85 at an approx. scale of 1" = 800' from our 1985 photography.</p> <p>Shipping/Handling</p>				

PACKING LIST



R11770

PAY THIS AMOUNT

\$227.50

PACKING SLIP

13-25-8

145-85

145-4

OTHER SIDE
POND



16-20

3-25-83

145-83

145-25

MOTTS POND



Several



Several
Ponds



0-2-21

3-25-85

145.85

3 0498

COONEYMUS
POND

18 5 0

3-25-85

145-85

46-2526

CONTINENTAL
POND



1980

3-25-85

14585

46-2532

Long Lot
pond

Tanucci
pond

3-25-85

-85

44-2507

RODMAN POND



1290

0 9 3



pozo
10/2/85

pozo
servicio v.

46-2533

145-85

25-85

8-25-85

145-85

16-2531

↑

↑
rows

↑
several in rows

↑
rows

↑

↑

↑
↑
↑

←
in rows

↑
several
around
house

↑
as several
house
bordered?

↑
↑

↑

↑
↑

25-85

145-85

46-2527



1280

3-25-50

145-85

46-2025



085

3-25-85

145-85

45-2521

145-85
↓ bundle
↓ bundle

1180

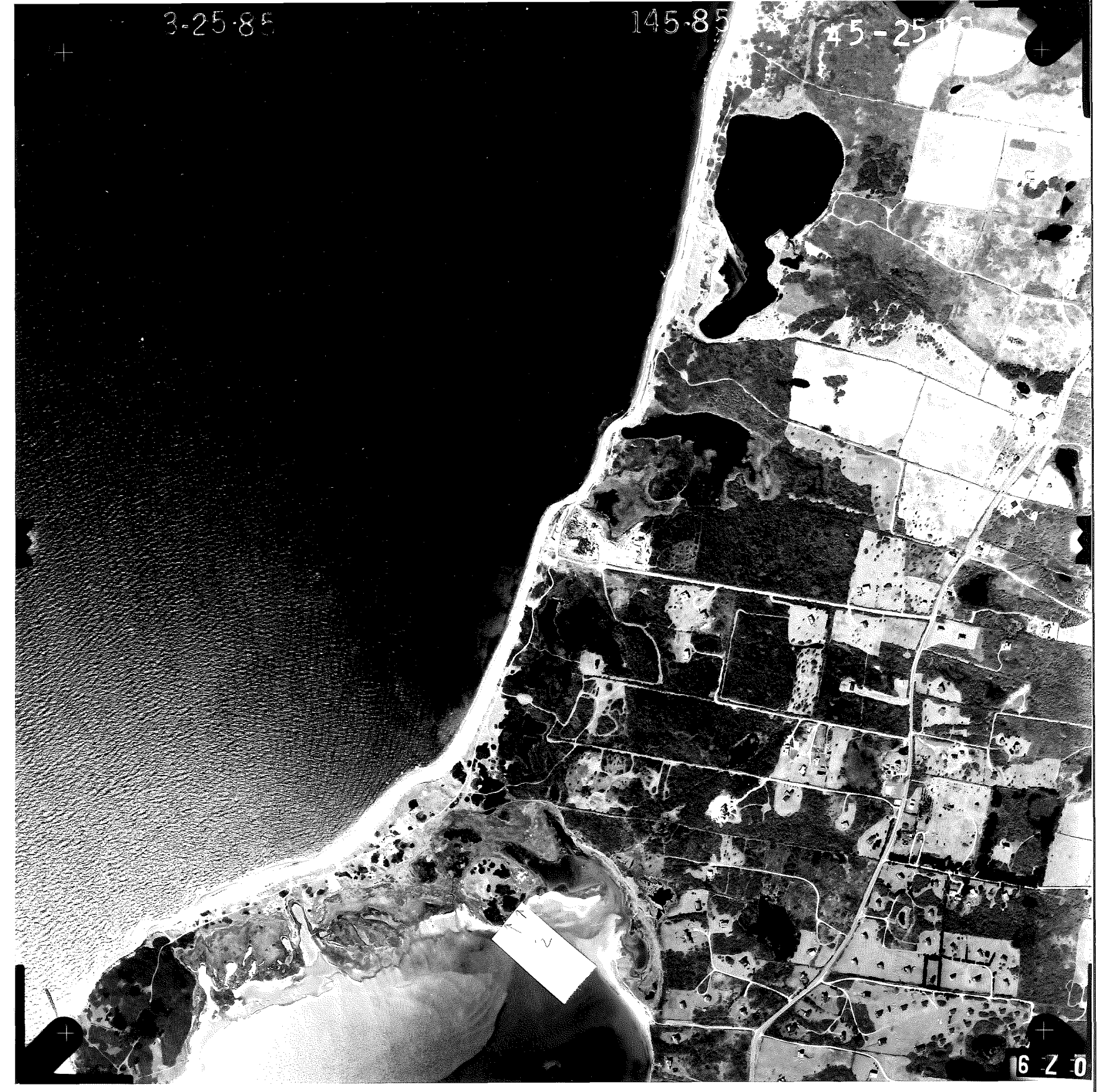
3-25-85

145-85

45-2510

145-2

16 Z 0





3-25-82

145-85

2515

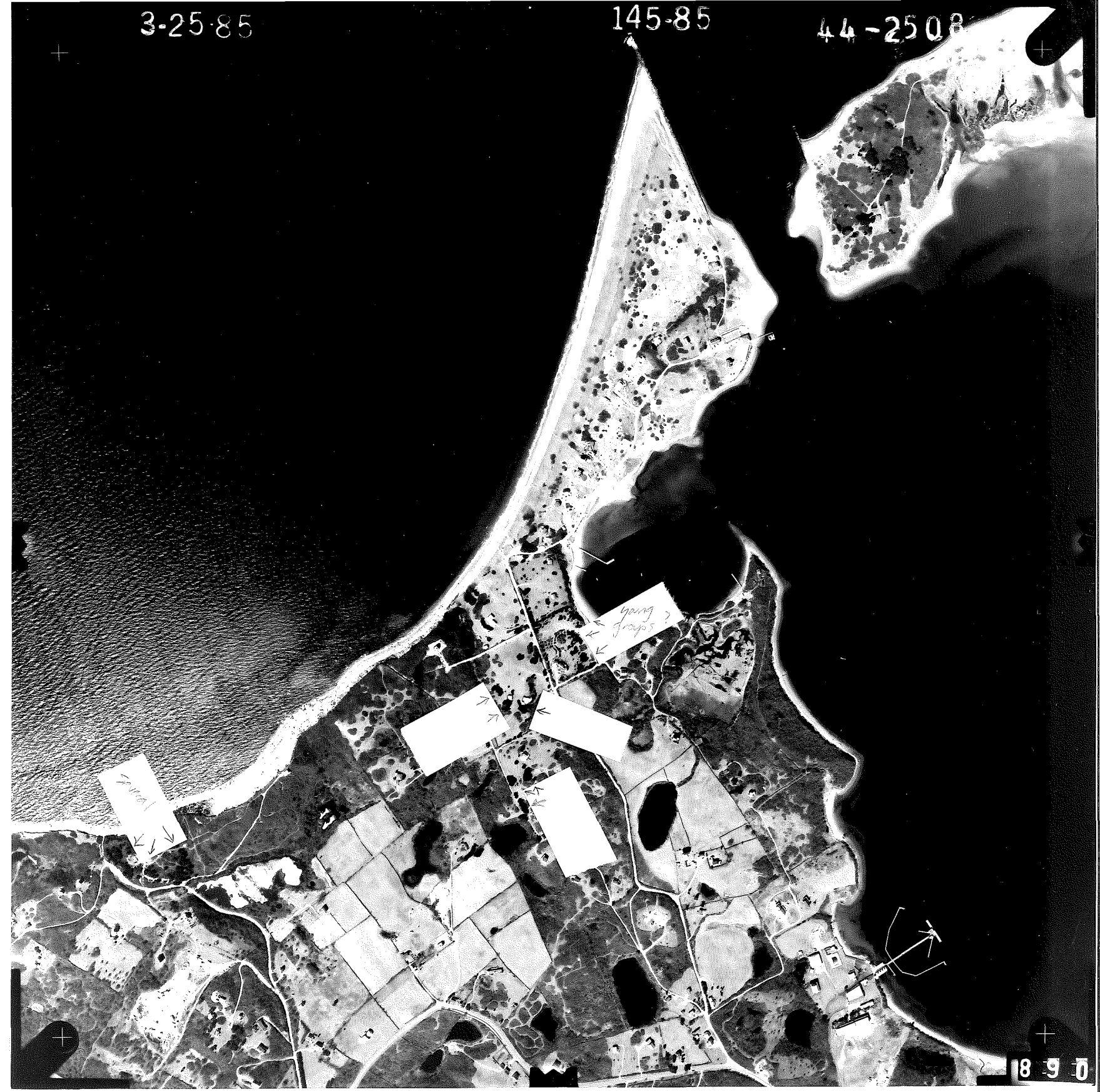


19 Z 0

3-25-85

145-85

44-2508



1890

2-25-85

145-8

506

↑ ↑

↑

↑ ↓

↑

→

↓

↓ ↓

↓

Several
scattered

←

1990



3-25-85

145-85

44-250

Several
↓

↓

↓

↓

↓

↓

Several
↓
but young
↓

1790



13-25085

145-85

-2503

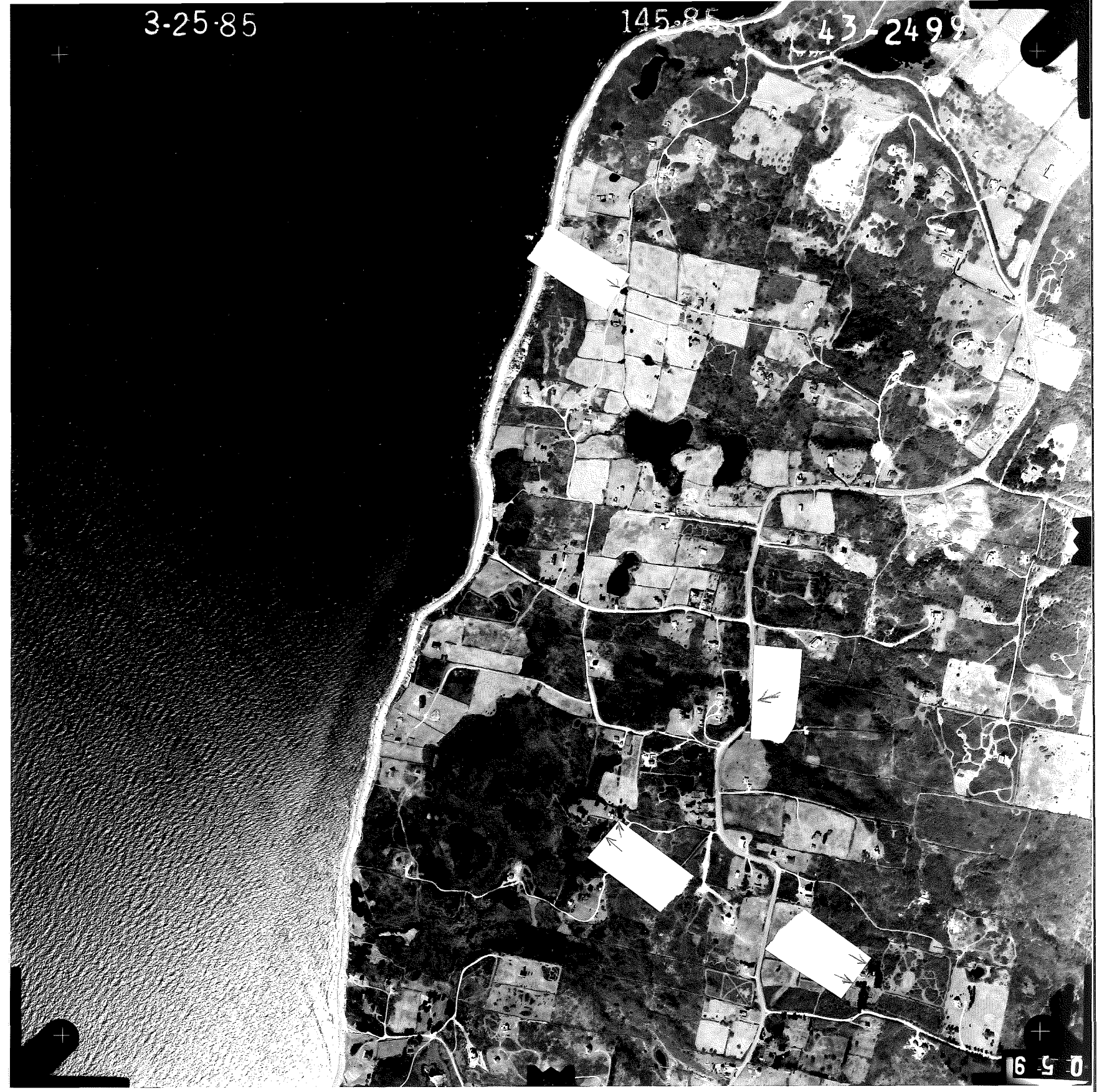


10-9-0

3-25-85

145-85

43-2499



1650

3-25-85

145-85

145-2497

10/10/85
↓
↓

25/04/85
puno 10
↓

↓
↓

10/10/85
↓

30/04/85
↓

0571

3-25-85

1256

18601

19,600

145-85

43-24-95

050

5-25-85

45-85

46-2530

Or. 1985

10 5 0

3-25-85 1256 153.601 1:9,600 145-80 43-2501

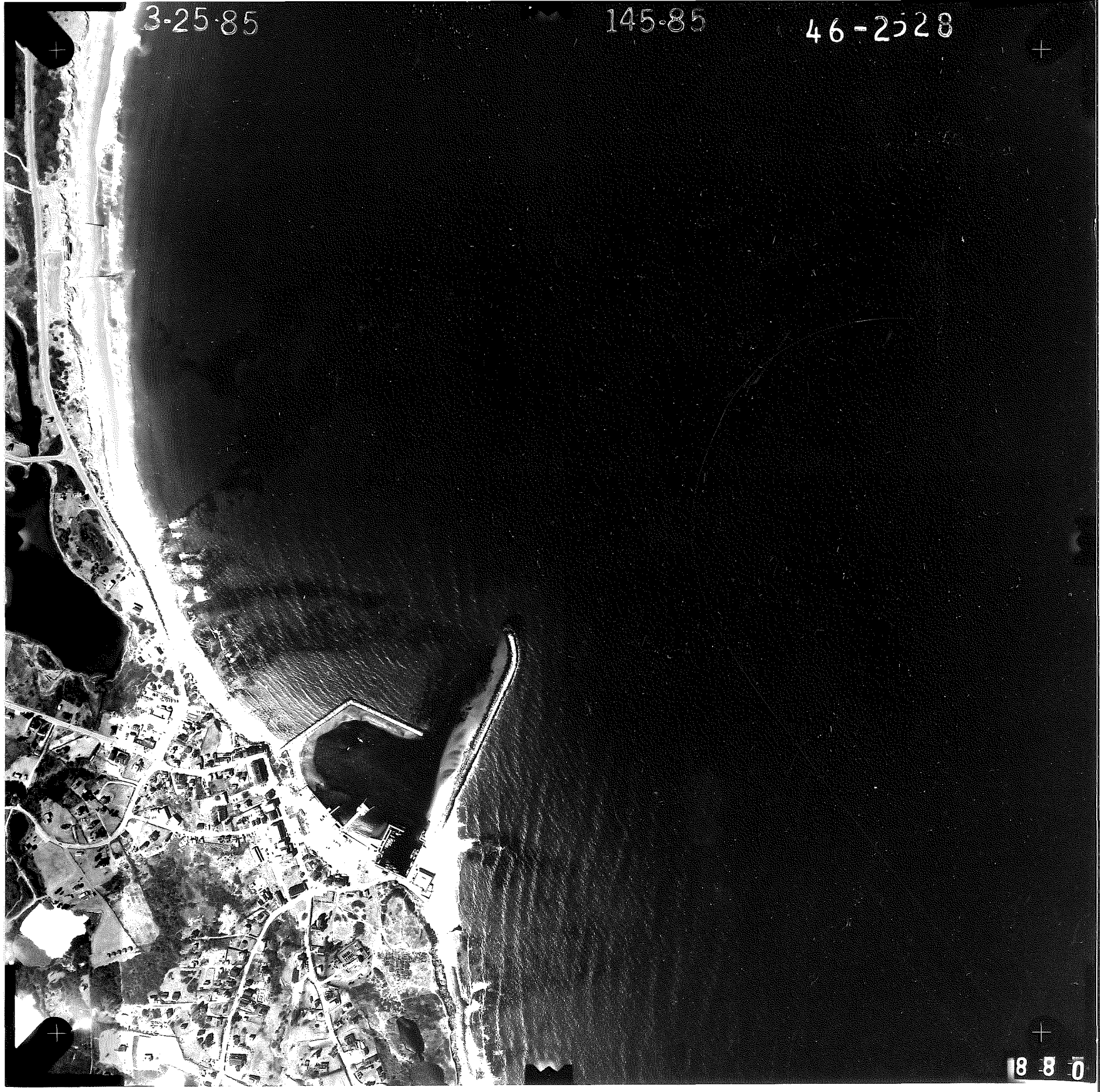


0611

3-25-85

145-85

46-2528



18 8 0

3-25-85 1348 153.601 19.600 145-8546-2524



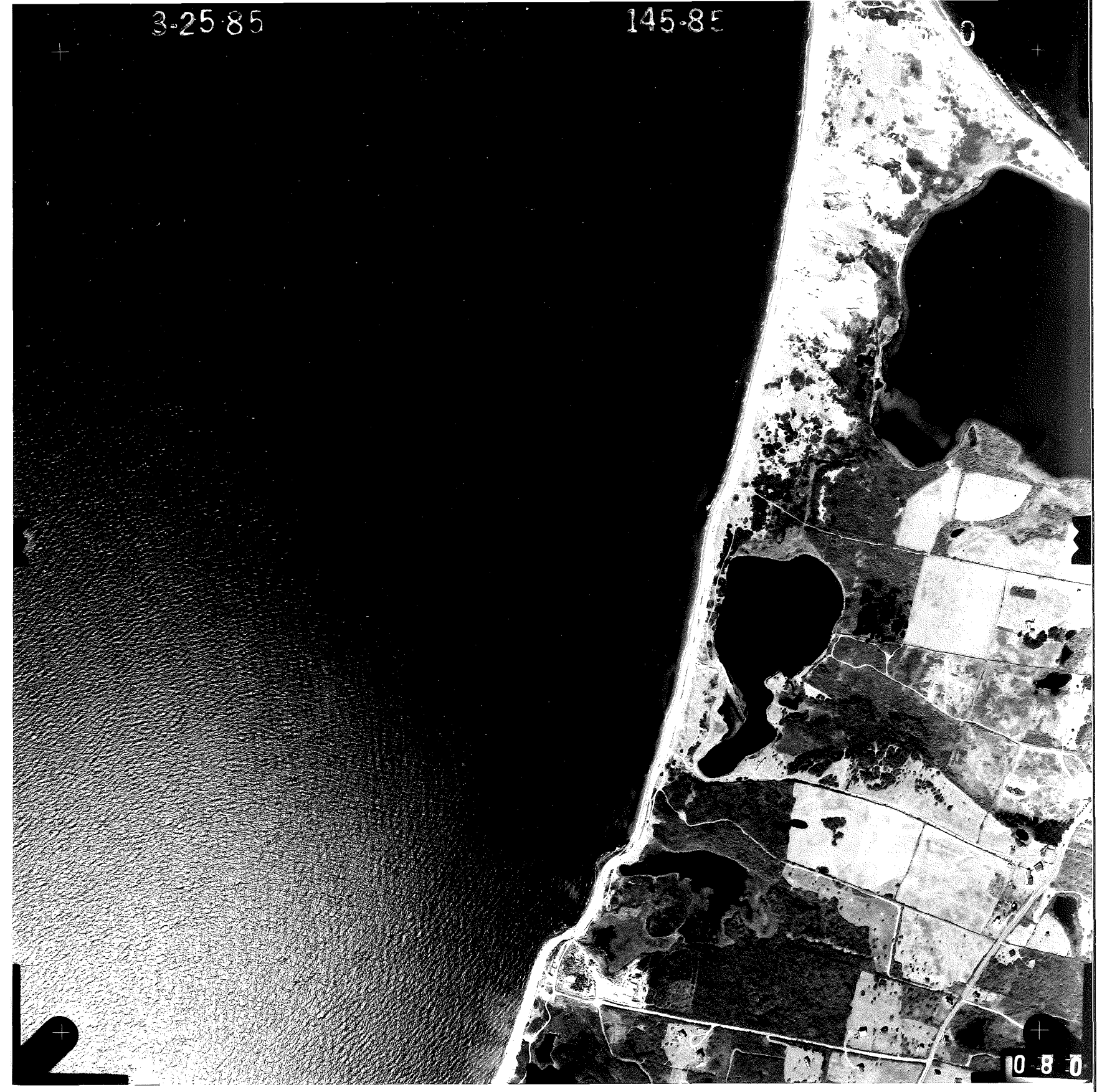
1780

3-25-85

145-85

0

10 8 0



3-25-85

145-85

4

18 Z 0



3-25-85

145-85

45-25

19 Z 0



3-25-83

3 4 5 6 7 8



17 2 0

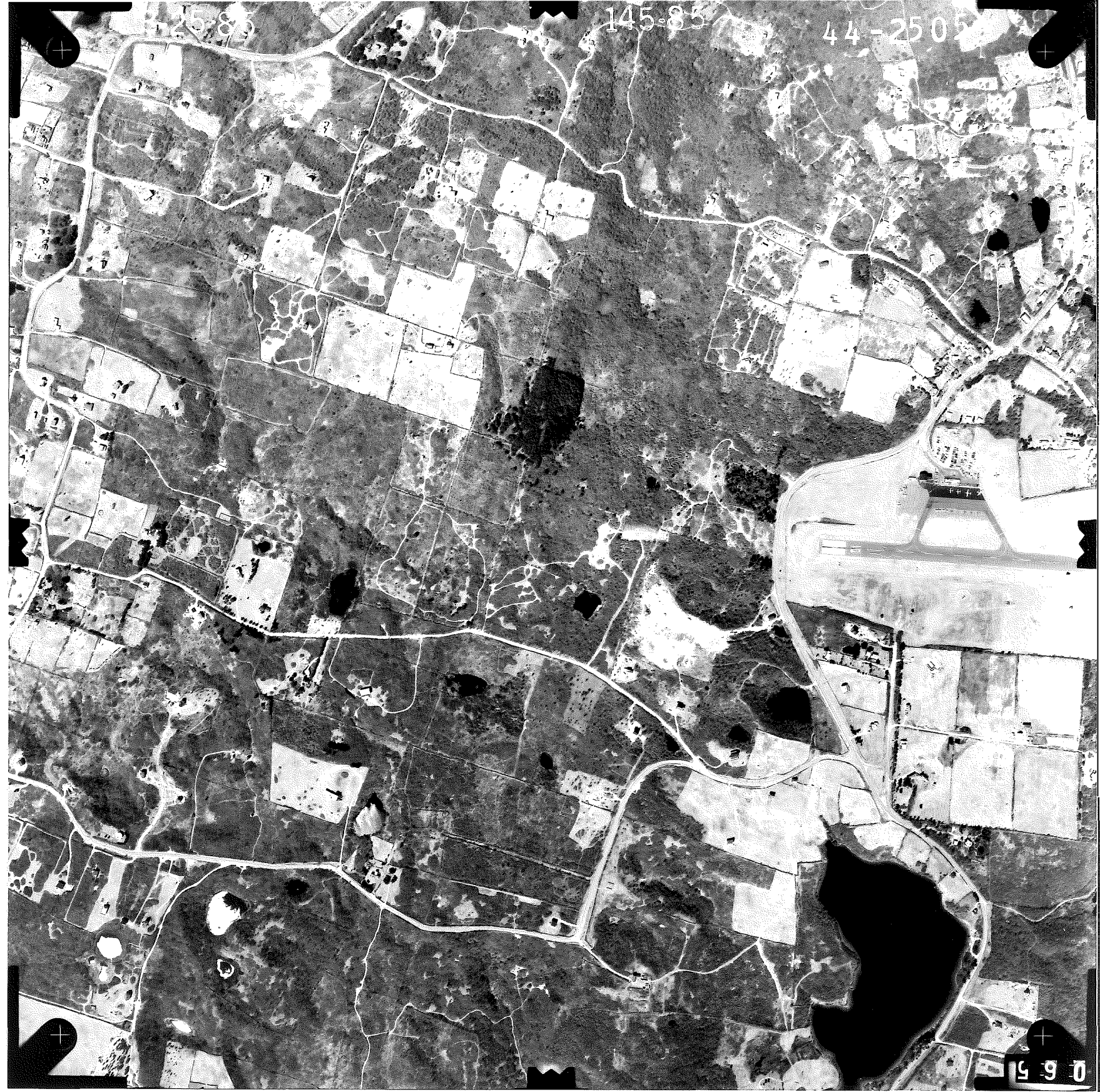
25-85 1309 153.801 1:9,600 145-85 45-2511

11-2-0

12589

145-85

44-2505



1990

3-25-85

1302

153.601

1:9.600

145-85

14-29-02

0 9 2

3-25-85

145-85

43-2500



10 9 0

3-25-85

145-85

43-2796



1950