

Harvard Forest Data Archive HF001-06

Data File:

Name = hf001-06-daily-m.csv  
Description = daily (metric) since 2001  
Rows = 9090 Columns = 46  
MD5 checksum = 9739ca16abe5581c9d00838c377253c4

Variables:

date = date  
jd = Julian day (nominalDay)  
airt = average air temperature. Average of 1-second measurements.  
(celsius)  
airtmax = maximum air temperature. Maximum of 1-second measurements.  
(celsius)  
airtmin = minimum air temperature. Minimum of 1-second measurements.  
(celsius)  
rh = average relative humidity. Average of 1-second measurements.  
(percent) (number)  
rhmax = maximum relative humidity. Maximum of 1-second measurements.  
(percent) (number)  
rhmin = minimum relative humidity. Minimum of 1-second measurements.  
(percent) (number)  
dewp = average dew point. Average of 1-second values calculated from  
air temperature and relative humidity. (celsius)  
dewpmax = maximum dew point. Maximum of 1-second values calculated  
from air temperature and relative humidity. (celsius)  
dewpmin = minimum dew point. Minimum of 1-second values calculated  
from air temperature and relative humidity. (celsius)  
prec = total precipitation. Includes water equivalent of snow. Total  
value for 1-day period. Measured in increments of 0.01 inch.  
(millimeter)  
slrt = total global solar radiation. Total value for 1-day period.  
(megajoulePerMeterSquared)  
part = total photosynthetically active radiation. Total value for  
1-day period. (molePerMeterSquared)  
netr = average net radiation. Includes short and long wave. Average  
of 1-second measurements. Corrected for wind speeds above 5 m/s  
using Campbell Scientific equation. (wattPerMeterSquared)  
bar = average barometric pressure. Corrected for elevation. Average  
of hourly measurements. (millibar)  
wspd = average horizontal scalar wind speed. Average of 1-second  
measurements. (metersPerSecond)  
wres = average horizontal resultant vector wind speed. Vector  
average of 1-second measurements. (metersPerSecond)  
wdir = average horizontal vector wind direction. Vector average of  
1-second measurements. Measured in degrees clockwise from true north.  
(degree)  
wdev = standard deviation of wind direction. Calculated from  
1-second measurements using Campbell Scientific equation. (degree)

gspd = gust speed. Maximum of 1-second measurements.  
(metersPerSecond)

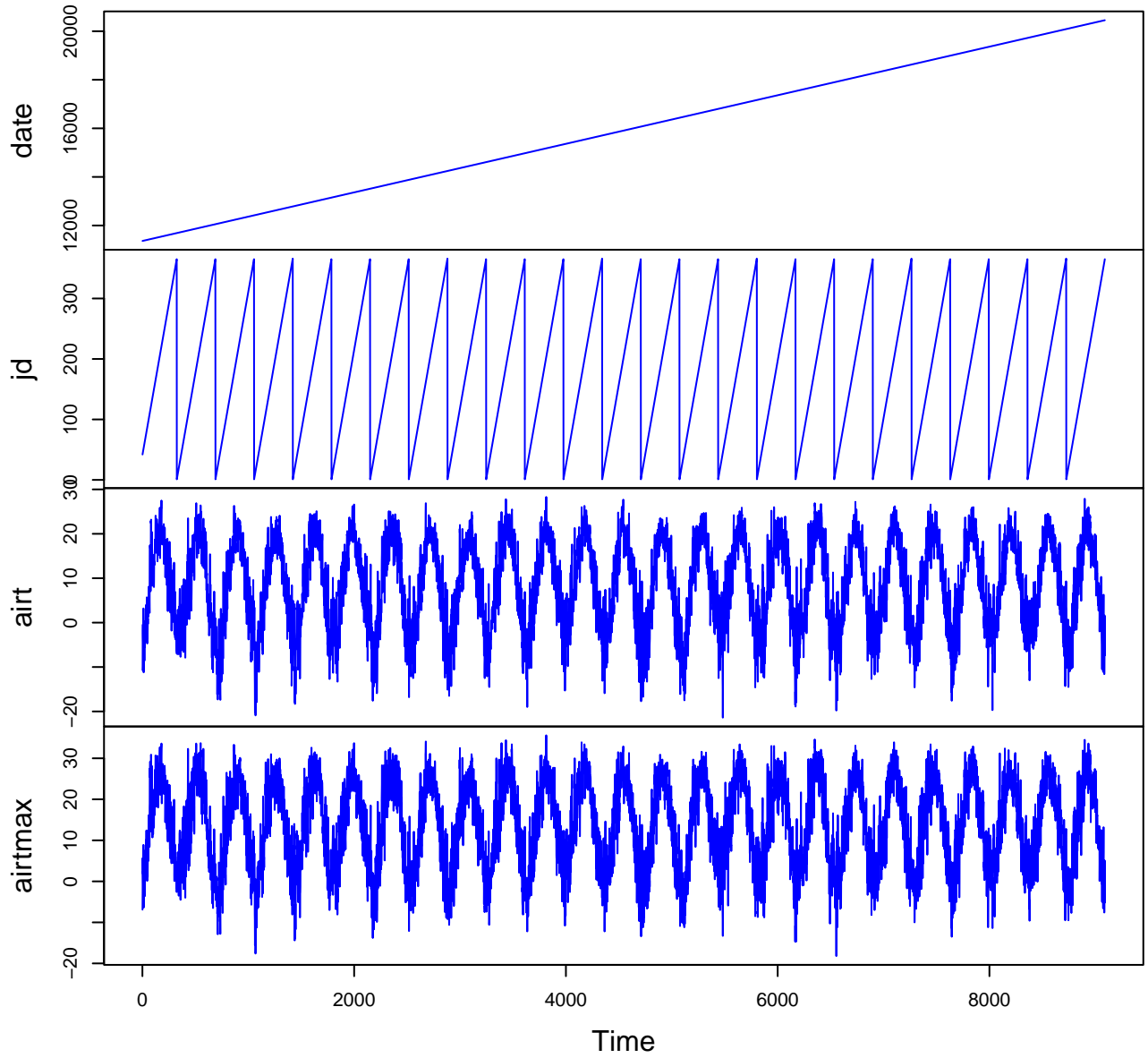
s10t = average soil temperature at 10cm depth. Average of 1-second measurements. (celsius)

s10tmax = maximum soil temperature at 10cm depth. Maximum of 1-second measurements. (celsius)

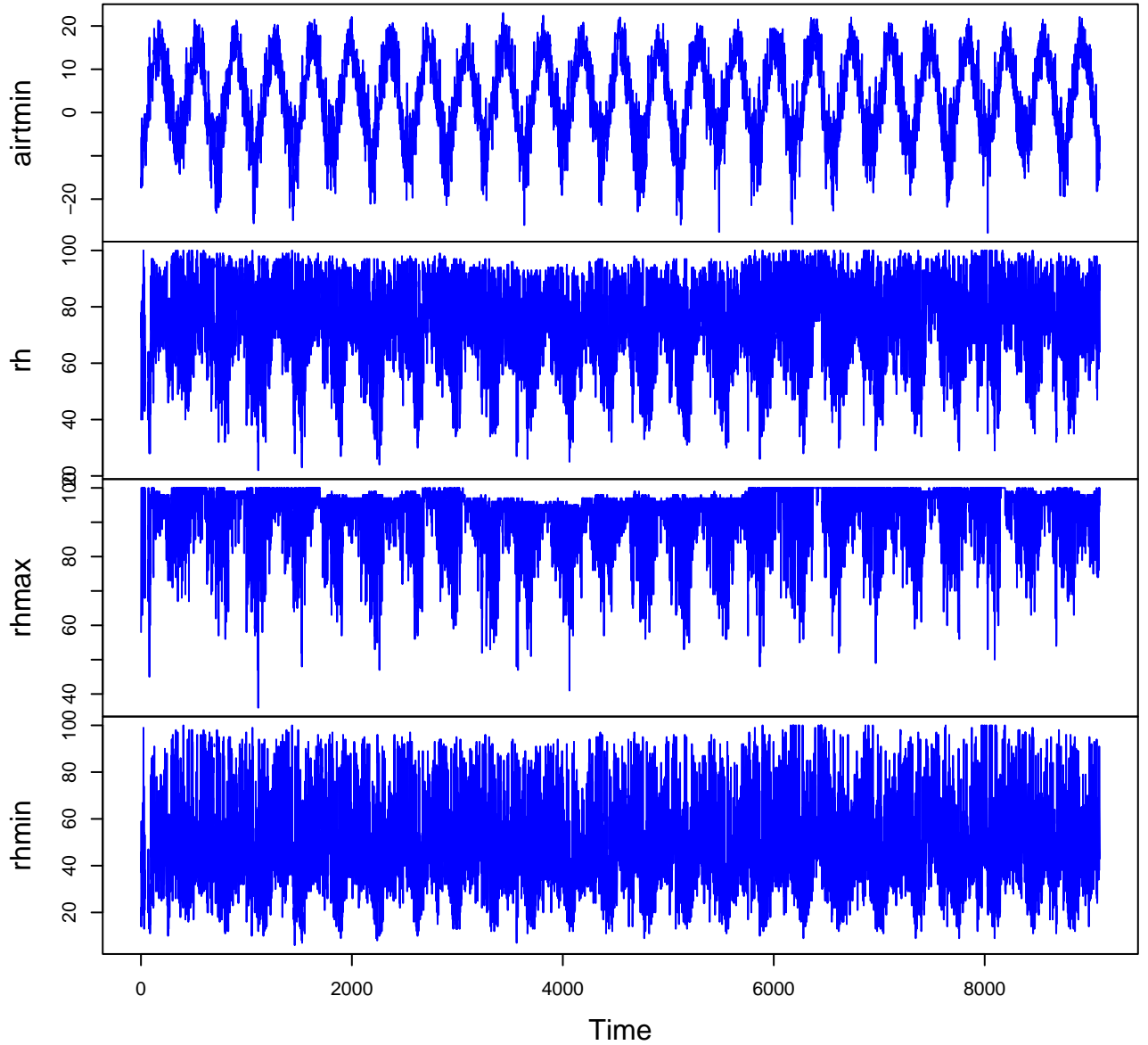
s10tmin = minimum soil temperature at 10cm depth. Minimum of 1-second measurements. (celsius)

Variable	Min	Median	Mean	Max	NAs
date	2001-02-11	2013-07-22	2013-07-22	2025-12-31	0
jd	1.000	184.000	183.851	366.000	0
airt	-21.400	9.000	8.496	28.300	0
airtmax	-18.200	14.600	13.903	35.600	0
airtmin	-27.800	3.700	3.521	23.000	0
rh	22.000	74.000	73.287	100.000	43
rhmax	36.000	96.000	92.120	100.000	43
rhmin	6.000	45.000	47.992	100.000	43
dewp	-31.600	3.800	3.368	23.200	43
dewpmax	-26.700	8.400	7.473	26.700	43
dewpmin	-37.800	-0.500	-0.871	21.500	43
prec	0.000	0.000	3.381	113.800	0
slrt	0.000	11.500	12.882	31.600	15
part	0.000	23.100	25.958	70.500	1038
netr	-99.200	34.700	51.575	224.000	1037
bar	982.000	1015.000	1014.657	1043.000	10
wspd	0.000	1.400	1.586	5.400	13
wres	0.000	1.000	1.107	4.900	14
wdir	0.000	221.000	208.259	360.000	14
wdev	0.000	43.000	44.403	79.000	14
gspd	0.000	8.200	8.729	23.400	13
s10t	-0.700	11.100	11.228	26.000	98
s10tmax	-0.500	12.000	12.027	29.900	98
s10tmin	-0.900	10.200	10.499	24.900	98

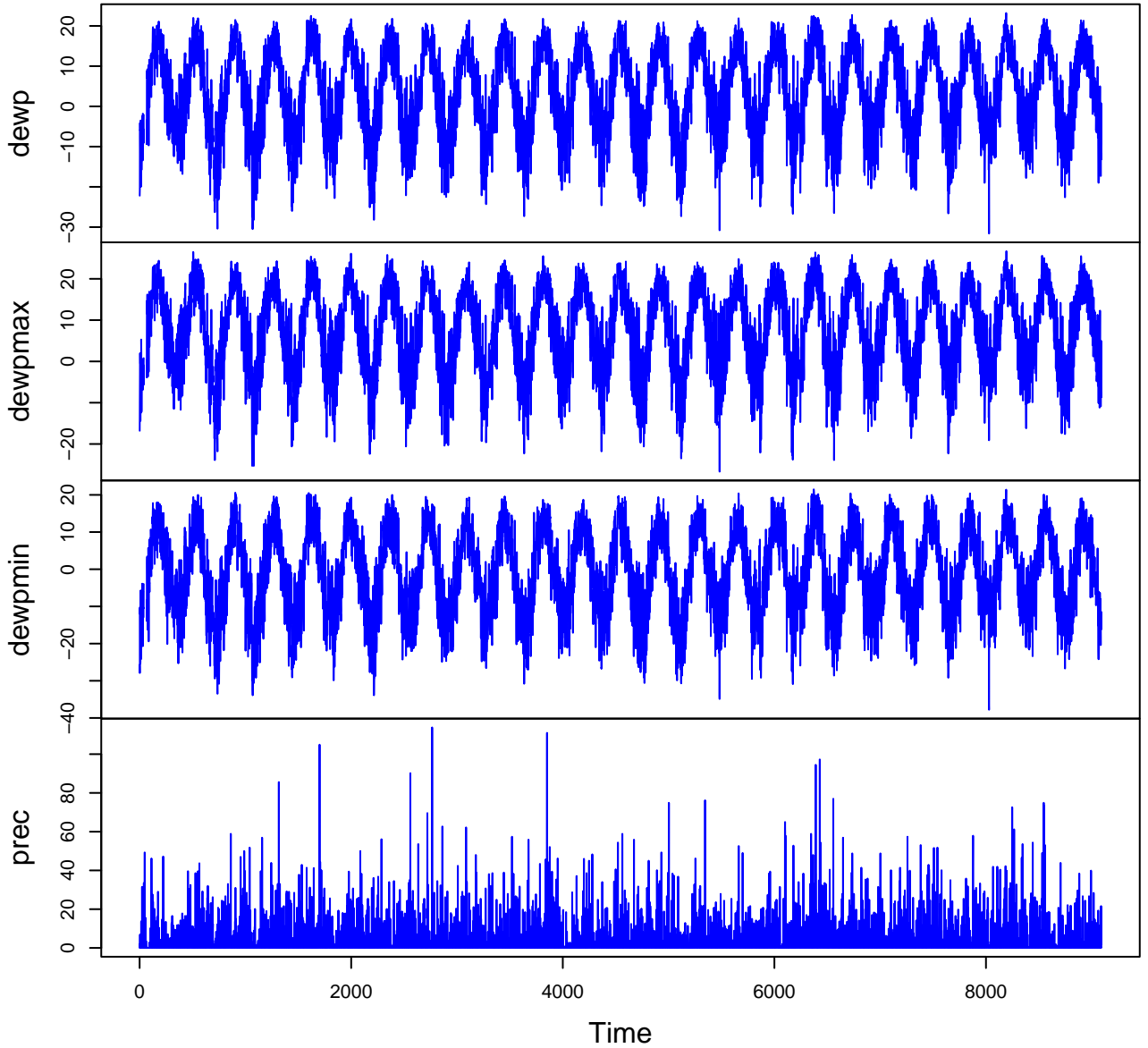
# HF001-06 Plot 1



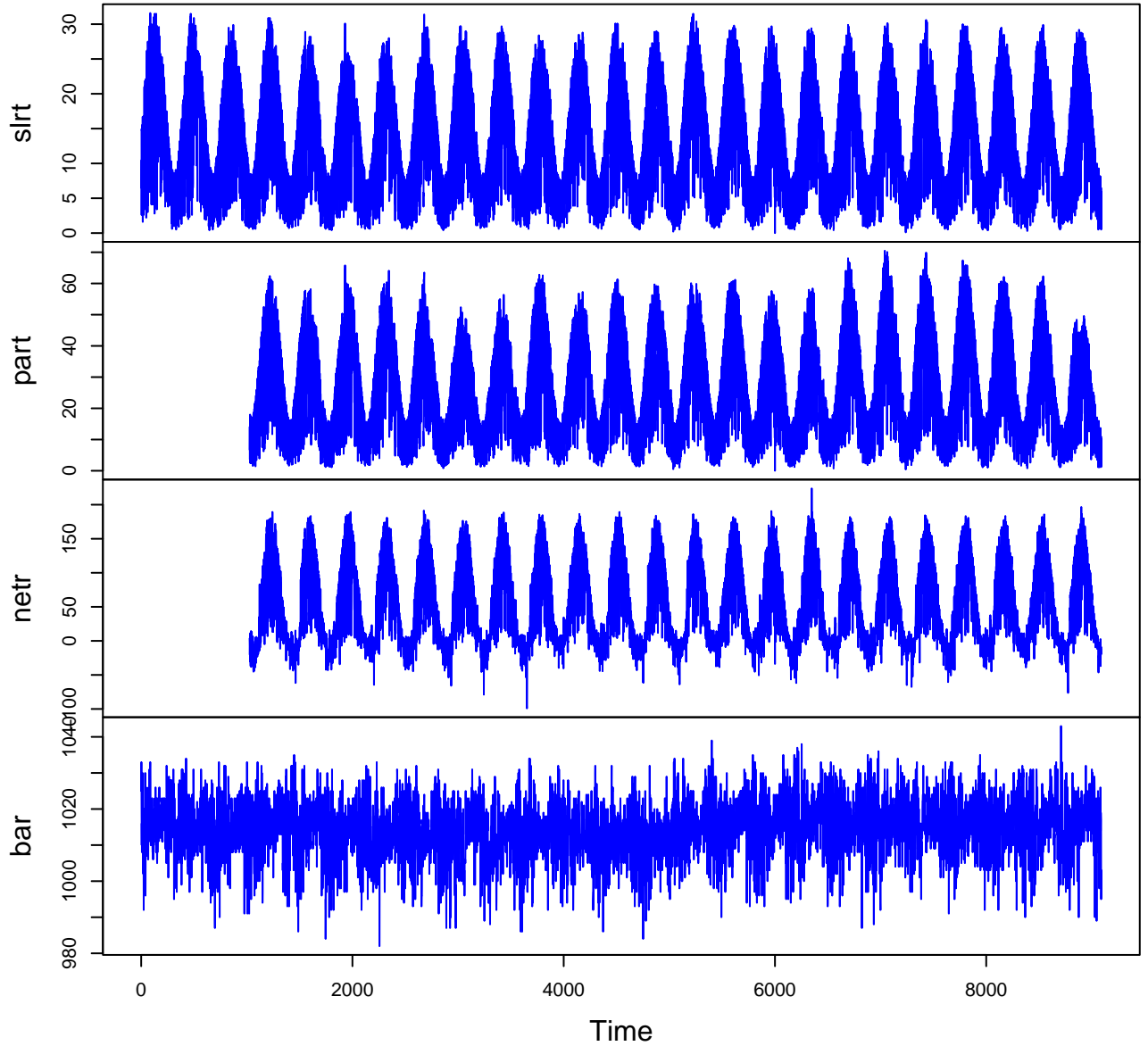
# HF001-06 Plot 2



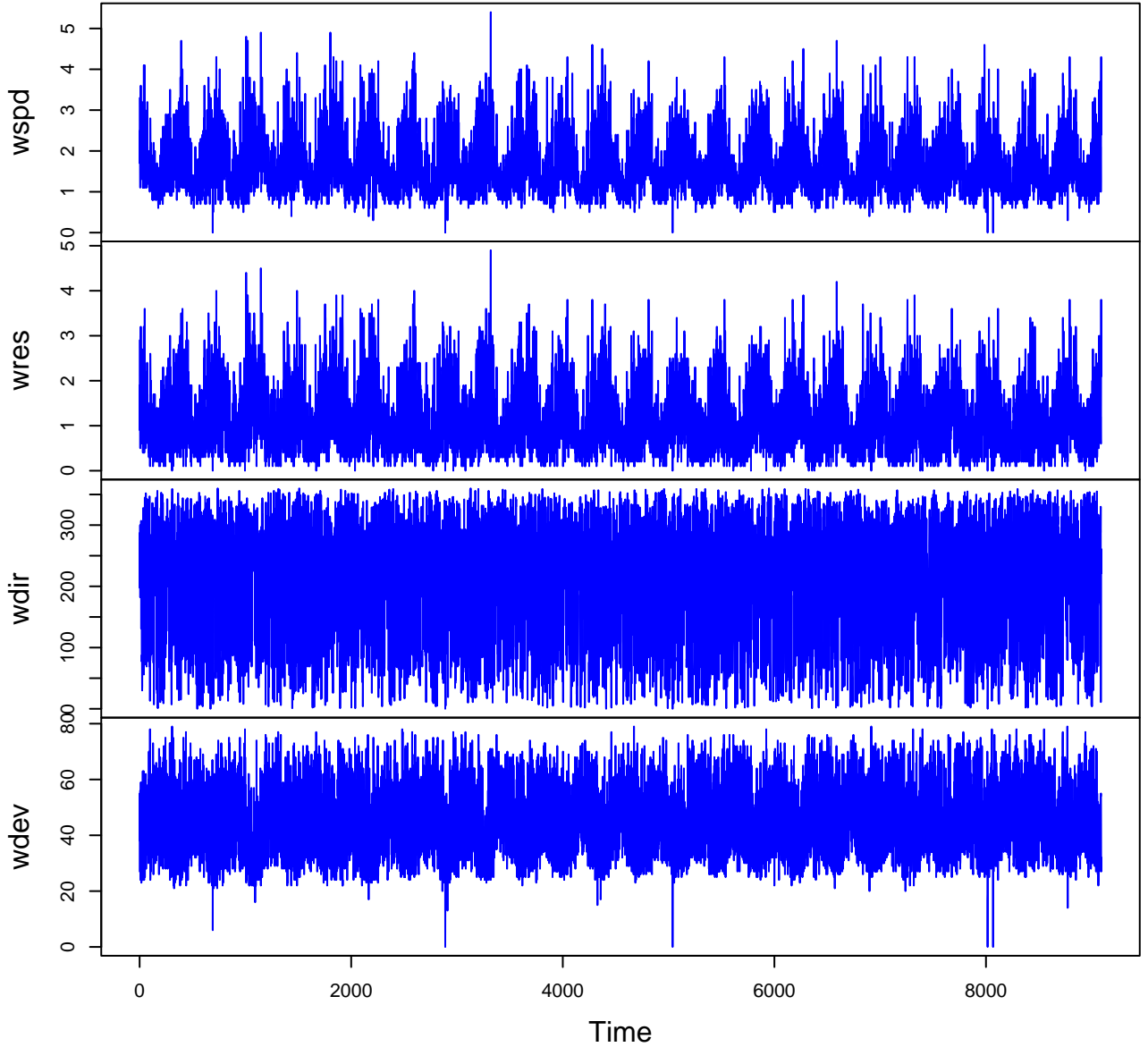
# HF001-06 Plot 3



# HF001-06 Plot 4



# HF001-06 Plot 5



# HF001-06 Plot 6

