

Harvard Forest Data Archive HF001-07

Data File:

Name = hf001-07-daily-e.csv
Description = daily (english) since 2001
Rows = 9090 Columns = 46
MD5 checksum = 23e1c9d9ad1817b941c8087eae592ff1

Variables:

date = date
jd = Julian day (nominalDay)
airt = average air temperature. Average of 1-second measurements.
(fahrenheit)
airtmax = maximum air temperature. Maximum of 1-second measurements.
(fahrenheit)
airtmin = minimum air temperature. Minimum of 1-second measurements.
(fahrenheit)
rh = average relative humidity. Average of 1-second measurements.
(percent) (number)
rhmax = maximum relative humidity. Maximum of 1-second measurements.
(percent) (number)
rhmin = minimum relative humidity. Minimum of 1-second measurements.
(percent) (number)
dewp = average dew point. Average of 1-second values calculated from
air temperature and relative humidity. (fahrenheit)
dewpmax = maximum dew point. Maximum of 1-second values calculated
from air temperature and relative humidity. (fahrenheit)
dewpmin = minimum dew point. Minimum of 1-second values calculated
from air temperature and relative humidity. (fahrenheit)
prec = Total precipitation. Includes water equivalent of snow. Total
value for 1-day period. Measured in increments of 0.01 inch. (inch)
slrt = Total global solar radiation. Total value for 1-day period.
(megajoulePerMeterSquared)
part = total photosynthetically active radiation. Total value for
1-day period. (molePerMeterSquared)
netr = average net radiation. Includes short and long wave. Average
of 1-second measurements. Corrected for wind speeds above 5 m/s
using Cambell Scientific equation. (wattPerMeterSquared)
bar = average barometric pressure. Corrected for elevation. Average
of hourly measurements. (inchOfMercury)
wspd = average horizontal scalar wind speed. Average of 1-second
measurements. (milesPerHour)
wres = average horizontal resultant vector wind speed. Vector
average of 1-second measurements. (milesPerHour)
wdir = average horizontal vector wind direction. Vector average of
1-second measurements. Measured in degrees clockwise from true north.
(degree)
wdev = standard deviation of wind direction. Calculated from
1-second measurements using Campbell Scientific equation. (degree)

gspd = Gust speed. Maximum of 1-second measurements. (milesPerHour)

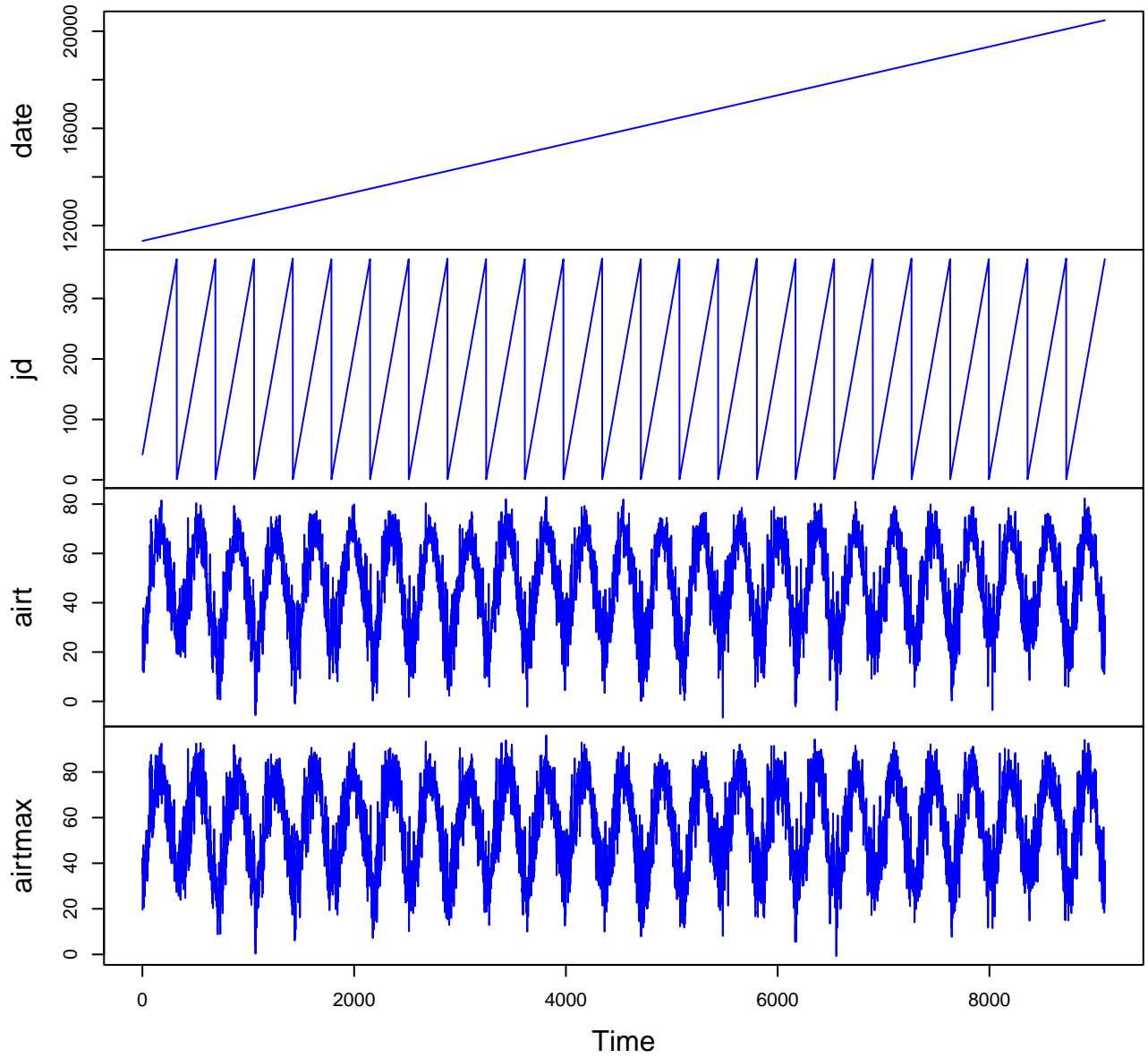
s10t = average soil temperature at 10cm depth. Average of 1-second measurements. (fahrenheit)

s10tmax = maximum soil temperature at 10cm depth. Maximum of 1-second measurements. (fahrenheit)

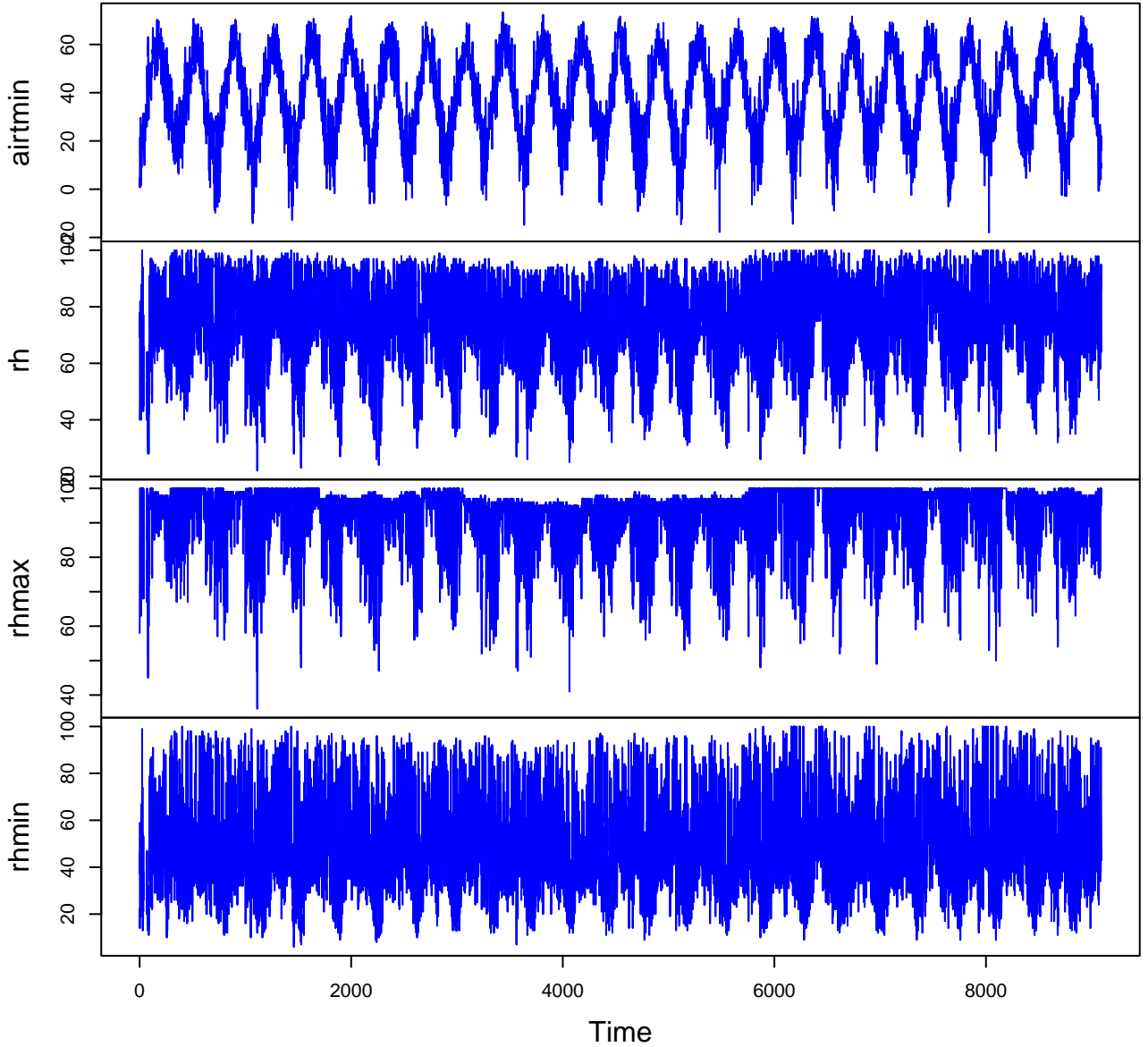
s10tmin = minimum soil temperature at 10cm depth. Minimum of 1-second measurements. (fahrenheit)

Variable	Min	Median	Mean	Max	NAs
date	2001-02-11	2013-07-22	2013-07-22	2025-12-31	0
jd	1.000	184.000	183.851	366.000	0
airt	-6.600	48.200	47.293	82.900	0
airtmax	-0.700	58.300	57.026	96.100	0
airtmin	-18.000	38.700	38.336	73.400	0
rh	22.000	74.000	73.287	100.000	43
rhmax	36.000	96.000	92.120	100.000	43
rhmin	6.000	45.000	47.992	100.000	43
dewp	-24.800	38.800	38.064	73.700	43
dewpmax	-16.000	47.100	45.453	80.100	43
dewpmin	-36.100	31.100	30.432	70.600	43
prec	0.000	0.000	0.133	4.480	0
slrt	0.000	11.500	12.882	31.600	15
part	0.000	23.100	25.958	70.500	1038
netr	-99.200	34.700	51.575	224.000	1037
bar	29.000	29.970	29.962	30.800	10
wspd	0.000	3.100	3.549	12.100	13
wres	0.000	2.200	2.477	11.000	14
wdir	0.000	221.000	208.259	360.000	14
wdev	0.000	43.000	44.403	79.000	14
gspd	0.000	18.300	19.527	52.400	13
s10t	30.700	51.900	52.210	78.800	98
s10tmax	31.100	53.650	53.649	85.800	98
s10tmin	30.400	50.400	50.899	76.900	98

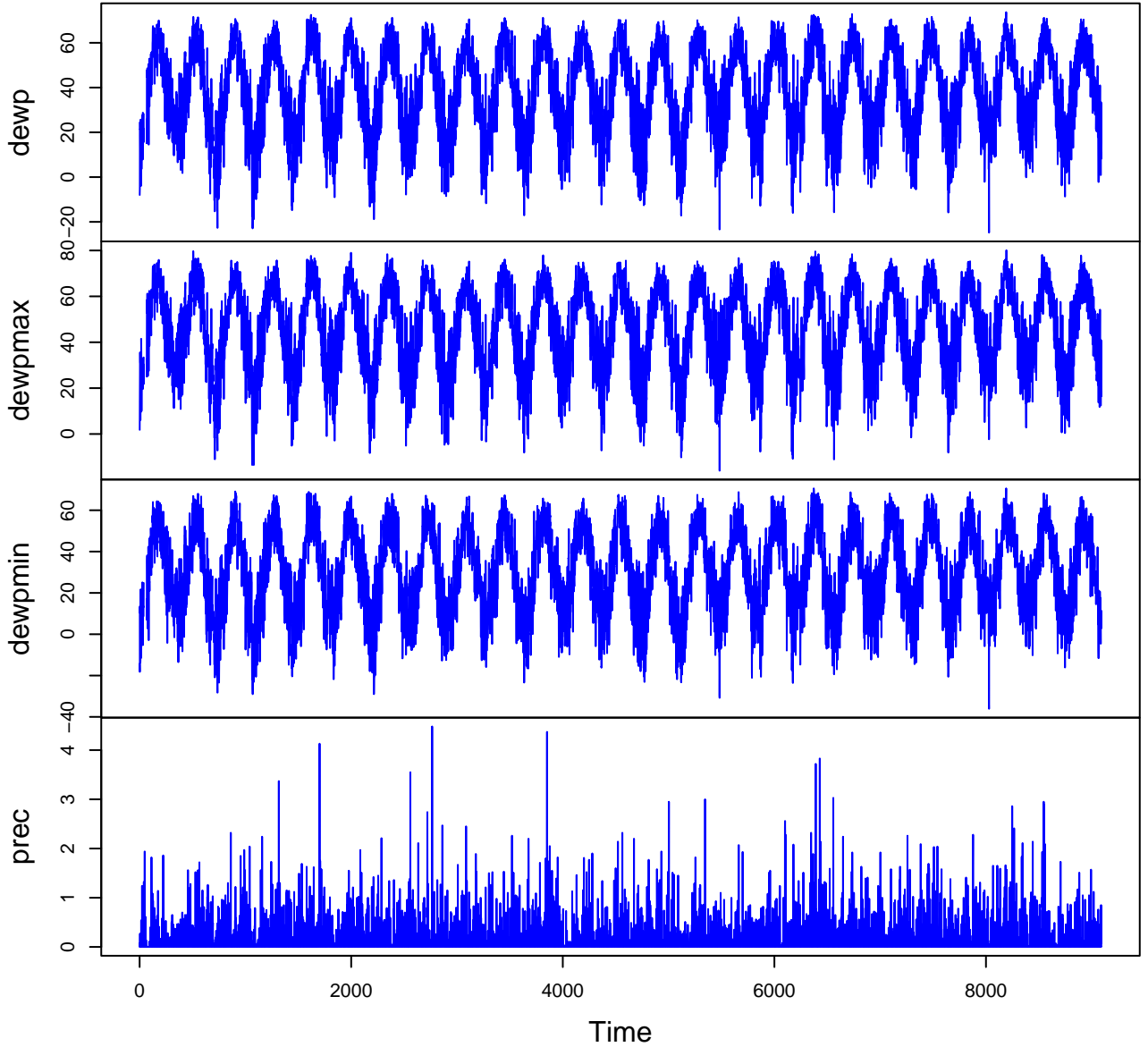
HF001-07 Plot 1



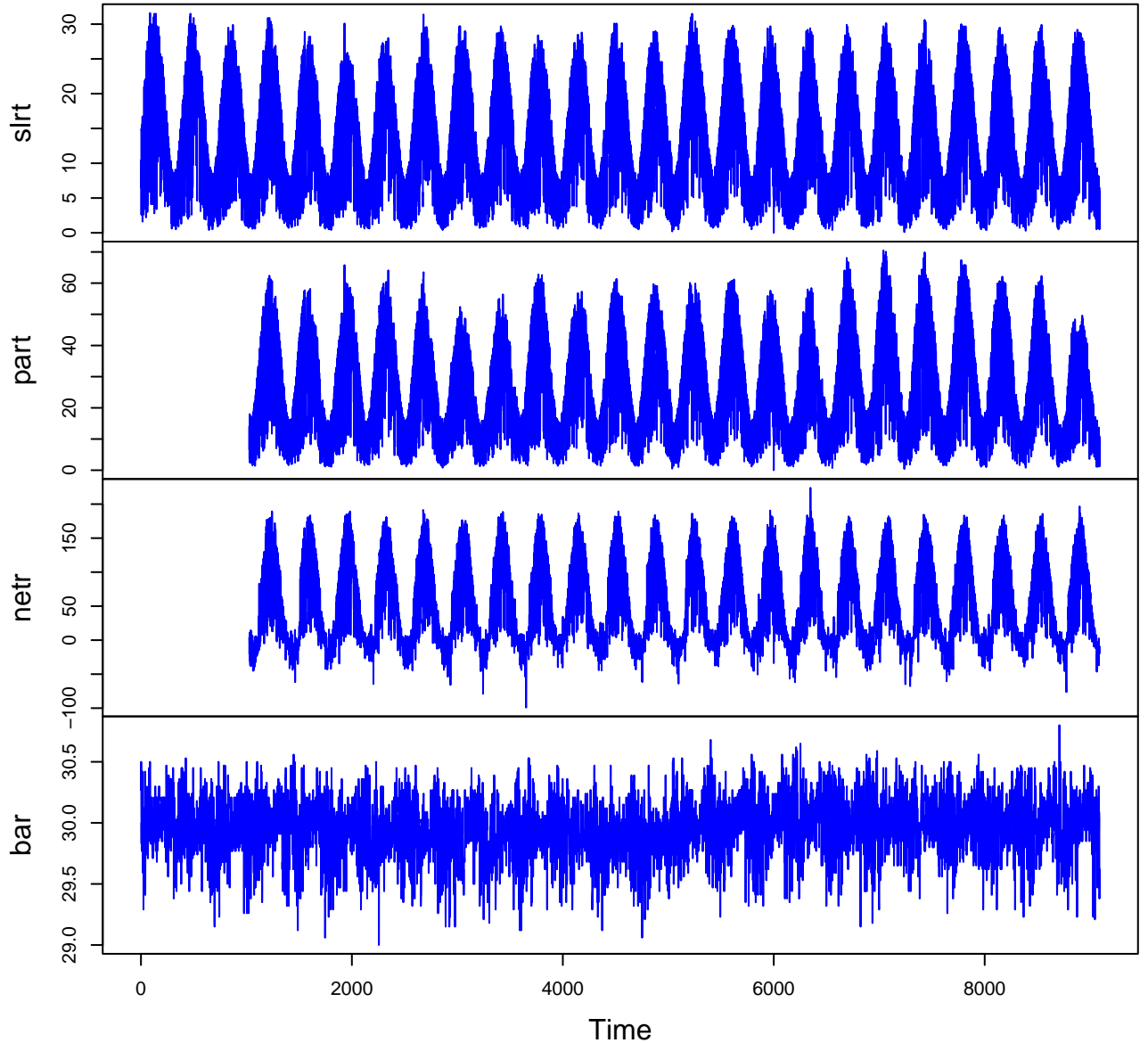
HF001-07 Plot 2



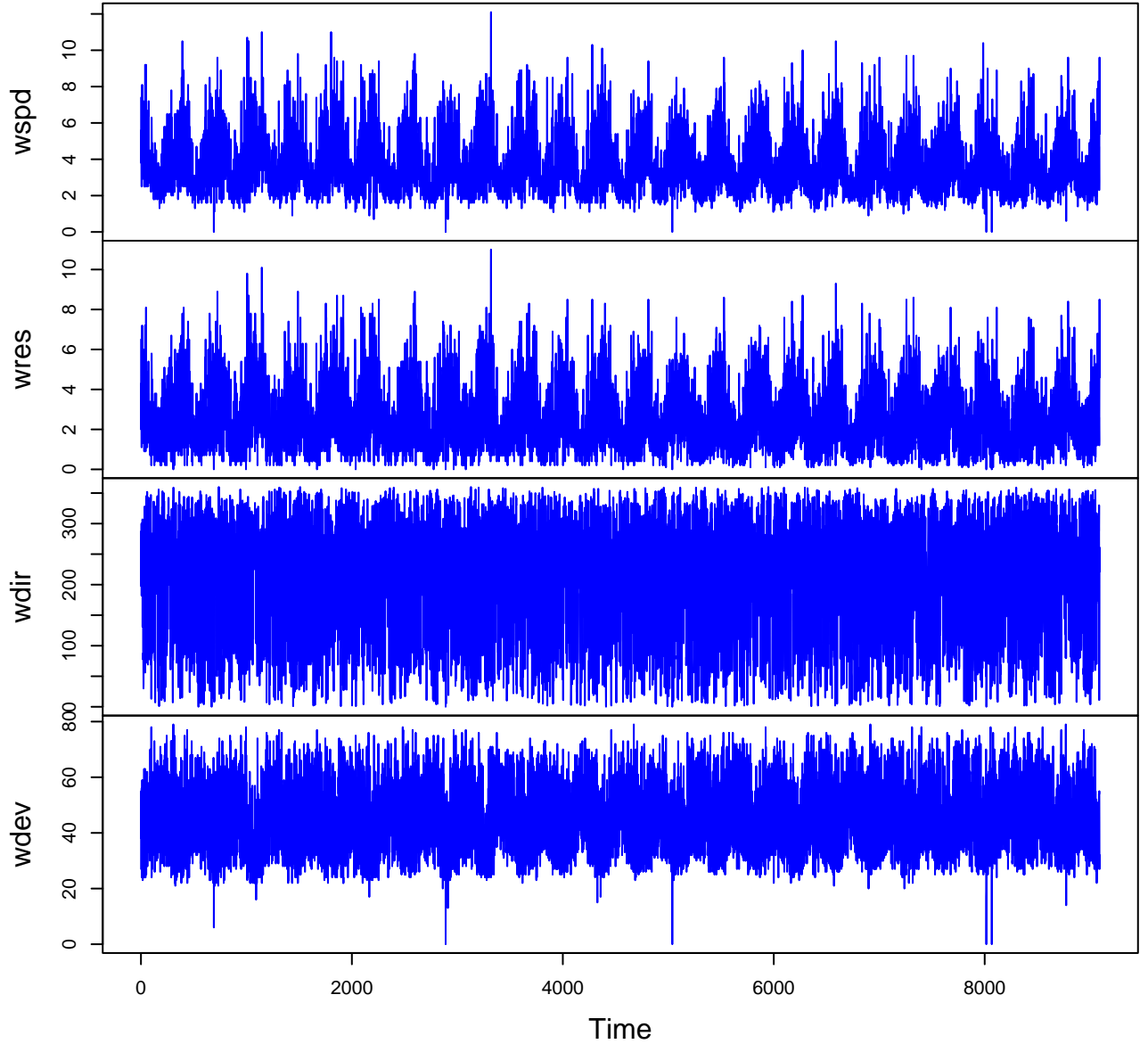
HF001-07 Plot 3



HF001-07 Plot 4



HF001-07 Plot 5



HF001-07 Plot 6

