

Harvard Forest Data Archive HF001-08

Data File:

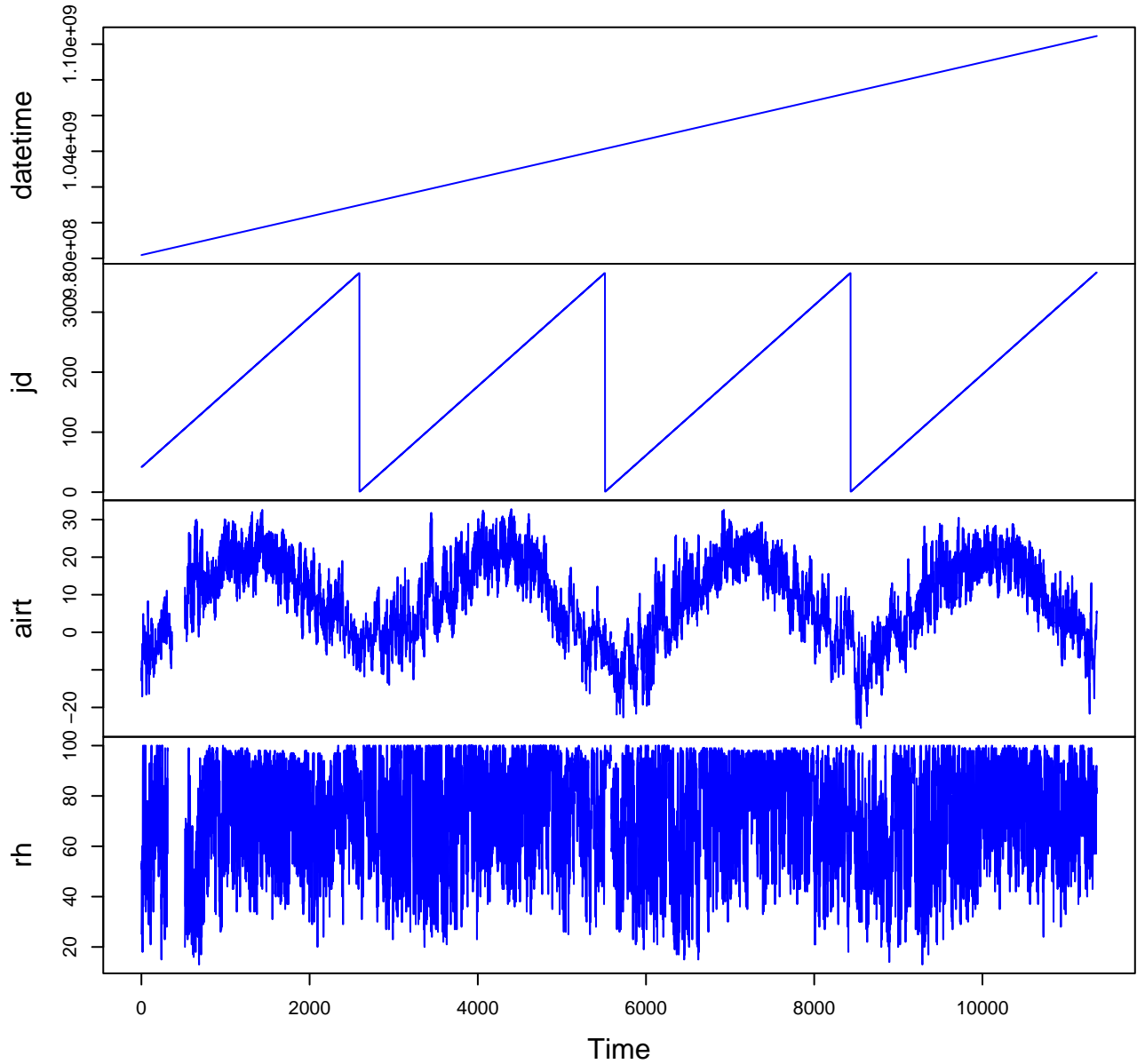
Name = hf001-08-hourly-m.csv
Description = hourly (metric) 2001-2004
Rows = 34080 Columns = 30
MD5 checksum = 19471d6569b1507d28433e677b58d634

Variables:

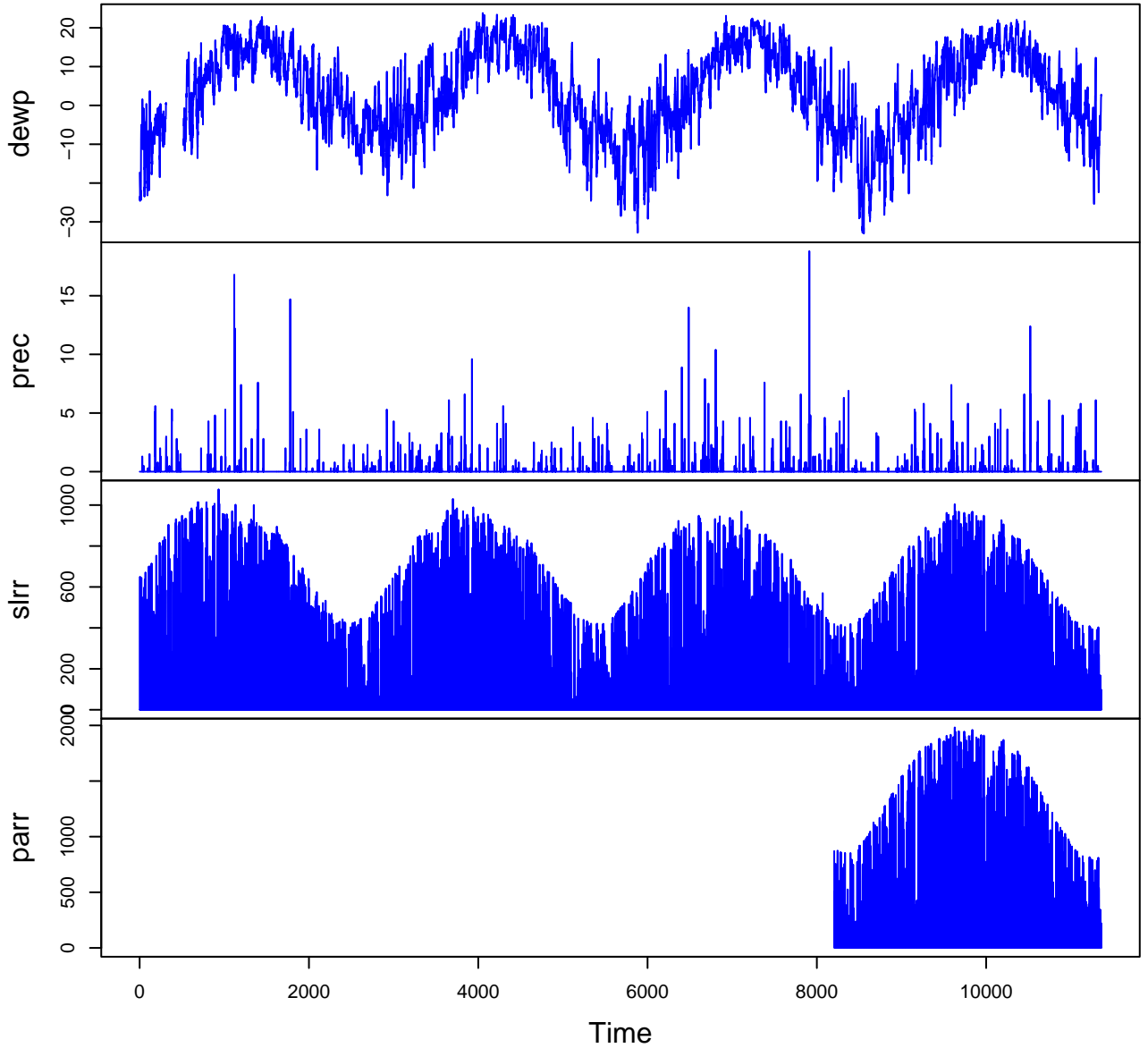
datetime = date and time at end of sampling period
jd = Julian day (nominalDay)
airt = air temperature. Average of 1-second measurements. (celsius)
rh = relative humidity. Average of 1-second measurements. (percent)
(number)
dewp = dew point. Average of 1-second values calculated from air
temperature and relative humidity. (celsius)
prec = precipitation. Includes water equivalent of snow. Total value
for 1-hour period. Measured in increments of 0.01 inch. (millimeter)
slrr = global solar radiation. Average of 1-second measurements.
(wattPerMeterSquared)
parr = photosynthetically active radiation. Average of 1-second
measurements. (micromolePerMeterSquaredPerSecond)
netr = net radiation. Includes short and long wave. Average of
1-second measurements. Corrected for wind speeds above 5 m/s using Campbell
Scientific equation. (wattPerMeterSquared)
bar = barometric pressure. Corrected for elevation. Sampled once per
hour. (millibar)
wspd = horizontal scalar wind speed. Average of 1-second
measurements. (metersPerSecond)
wres = horizontal resultant vector wind speed. Vector average of
1-second measurements. (metersPerSecond)
wdir = horizontal vector wind direction. Vector average of 1-second
measurements. Measured in degrees clockwise from true north. (degree)
wdev = standard deviation of wind direction. Calculated from
1-second measurements using Campbell Scientific equation. (degree)
gspd = gust speed. Maximum of 1-second measurements.
(metersPerSecond) (metersPerSecond)
s10t = Soil temperature at 10cm depth. Average of 1-second
measurements. (celsius)

Variable	Min	Median	Mean	Max	NAs
datetime	2001-02-11T01:00		2005-01-01T00:00		0
jd	1.000	188.000	187.805	366.000	0
airt	-25.500	9.000	8.402	33.200	476
rh	12.000	77.000	73.737	100.000	647
dewp	-33.500	4.100	3.382	23.900	648
prec	0.000	0.000	0.126	38.900	306
slrr	0.000	6.000	157.579	1077.000	15
parr	0.000	9.000	298.909	1984.000	24612
netr	-180.000	-8.000	46.755	648.000	24613
bar	979.000	1016.000	1015.169	1037.000	2
wspd	0.000	1.500	1.656	7.300	8
wres	0.000	1.300	1.431	6.800	8
wdir	0.000	213.000	191.893	360.000	8
wdev	0.000	28.000	29.612	78.000	8
gspd	0.000	4.700	5.090	20.800	9
s10t	-0.900	11.800	11.450	29.900	2308

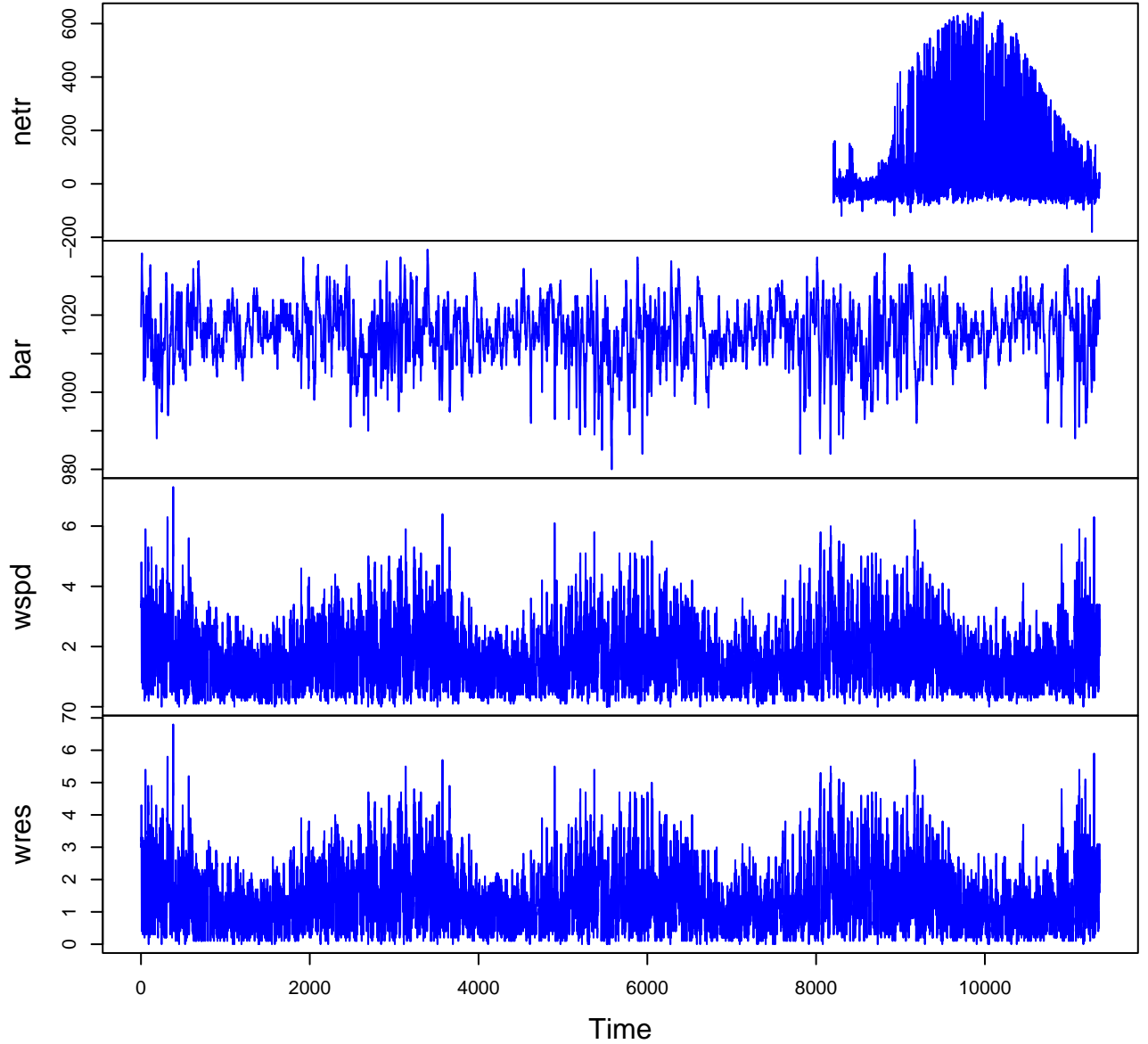
HF001-08 Plot 1



HF001-08 Plot 2



HF001-08 Plot 3



HF001-08 Plot 4

