

Harvard Forest Data Archive HF001-09

Data File:

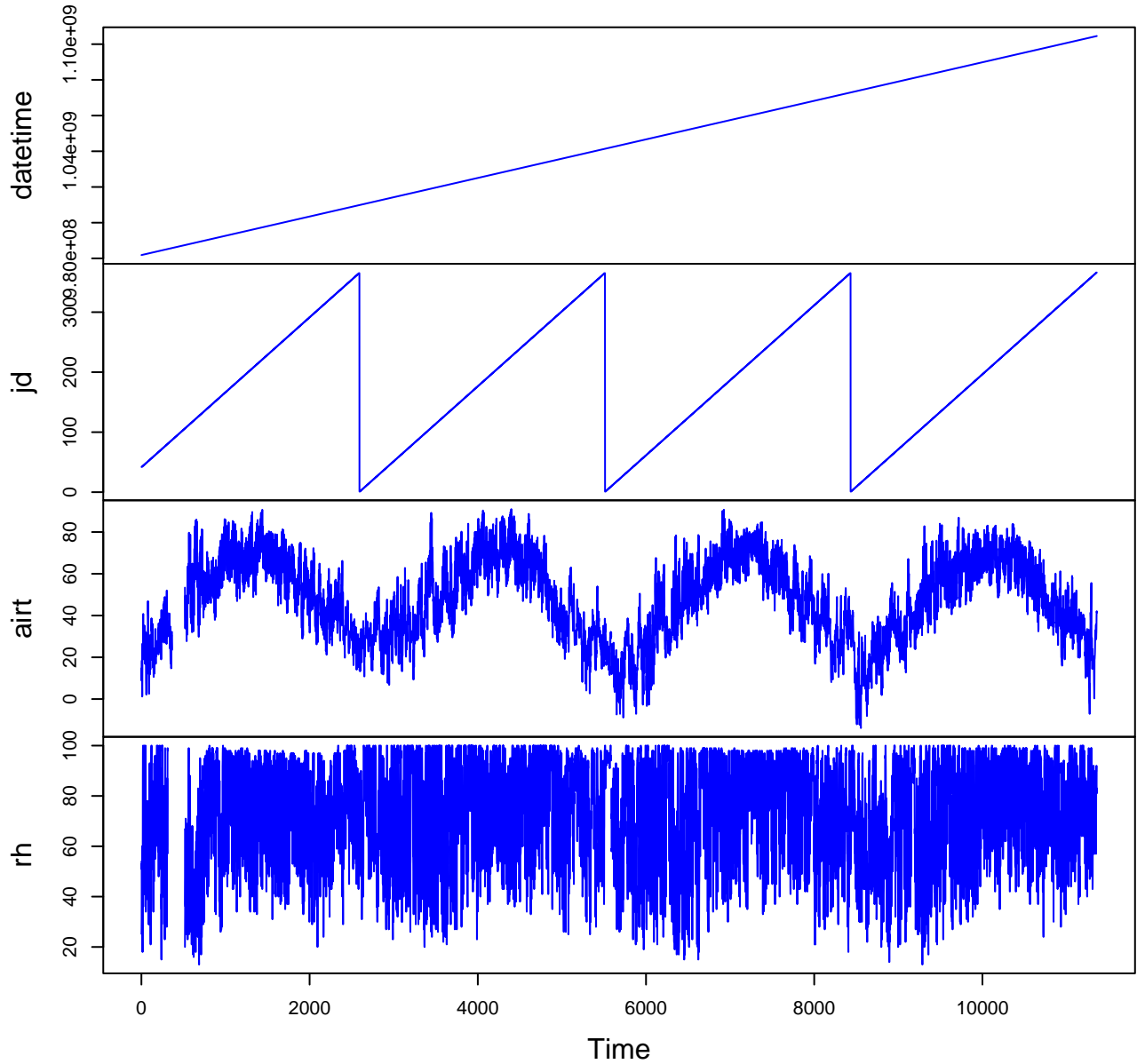
Name = hf001-09-hourly-e.csv
Description = hourly (english) 2001-2004
Rows = 34080 Columns = 30
MD5 checksum = c9feb3ab29fcd31a83b64bd2468ce16

Variables:

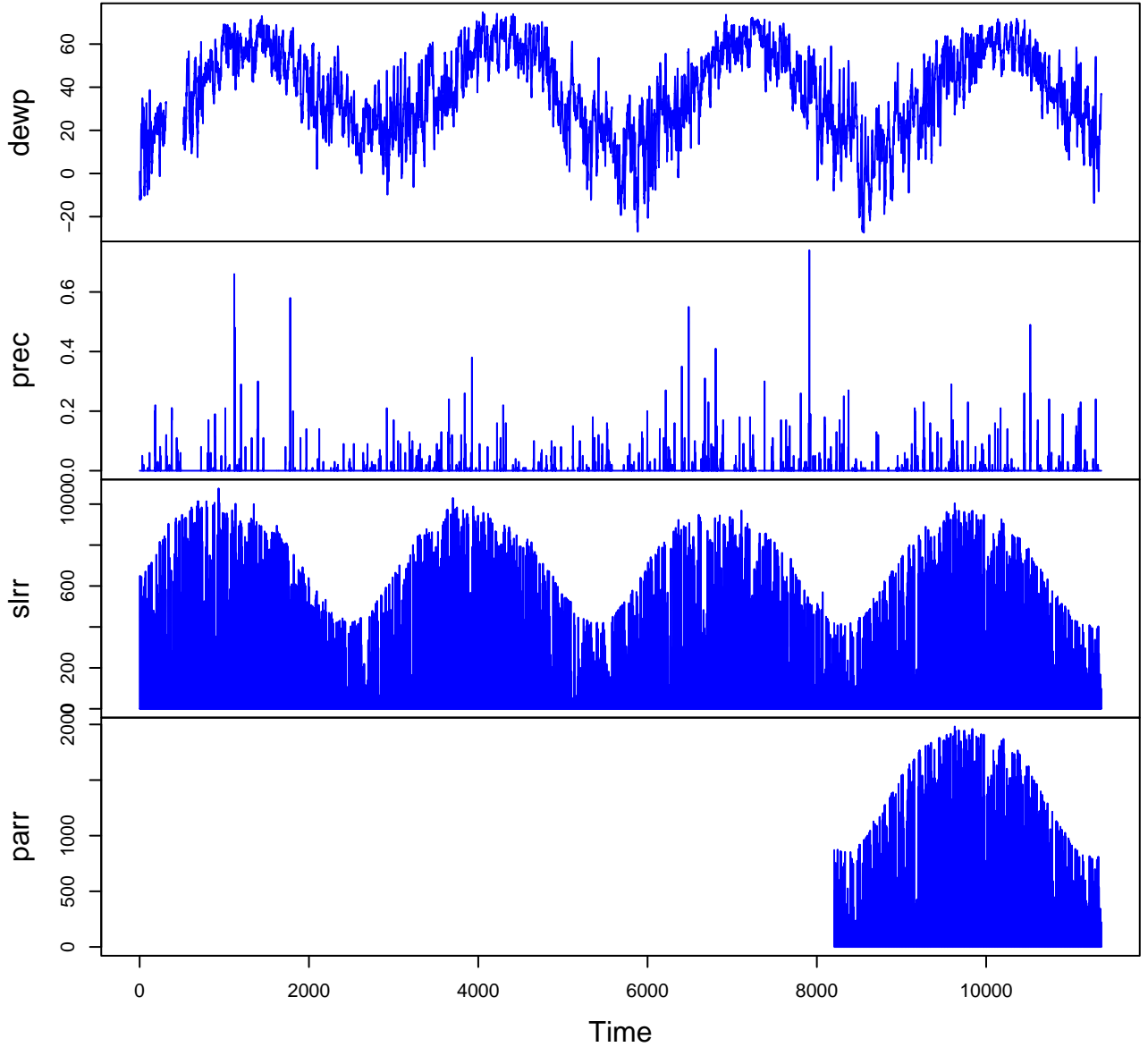
datetime = date and time at end of sampling period
jd = Julian day (nominalDay)
airt = Air temperature. Average of 1-second measurements.
(fahrenheit)
rh = relative humidity. Average of 1-second measurements. (percent)
(number)
dewp = dew point. Average of 1-second values calculated from air
temperature and relative humidity. (fahrenheit)
prec = precipitation. Includes water equivalent of snow. Total value
for 1-hour period. Measured in increments of 0.01 inch. (inch)
slrr = global solar radiation. Average of 1-second measurements.
(wattPerMeterSquared)
parr = photosynthetically active radiation. Average of 1-second
measurements. (micromolePerMeterSquaredPerSecond)
netr = net radiation. Includes short and long wave. Average of
1-second measurements. Corrected for wind speeds above 5 m/s using Cambell
Scientific equation. (wattPerMeterSquared)
bar = barometric pressure. Corrected for elevation. Sampled once per
hour. (inchOfMercury)
wspd = horizontal scalar wind speed. Average of 1-second
measurements. (milesPerHour)
wres = horizontal resultant vector wind speed. Vector average of
1-second measurements. (milesPerHour)
wdir = horizontal vector wind direction. Vector average of 1-second
measurements. Measured in degrees clockwise from true north. (degree)
wdev = standard deviation of wind direction. Calculated from
1-second measurements using Campbell Scientific equation. (degree)
gspd = gust speed. Maximum of 1-second measurements. (milesPerHour)
s10t = soil temperature at 10cm depth. Average of 1-second
measurements. (fahrenheit)

Variable	Min	Median	Mean	Max	NAs
datetime	2001-02-11T01:00		2005-01-01T00:00		0
jd	1.000	188.000	187.805	366.000	0
airt	-13.900	48.200	47.123	91.800	476
rh	12.000	77.000	73.737	100.000	647
dewp	-28.300	39.400	38.088	75.000	648
prec	0.000	0.000	0.005	1.530	306
slrr	0.000	6.000	157.579	1077.000	15
parr	0.000	9.000	298.909	1984.000	24612
netr	-180.000	-8.000	46.755	648.000	24613
bar	28.910	30.000	29.977	30.620	2
wspd	0.000	3.400	3.705	16.300	8
wres	0.000	2.900	3.202	15.200	8
wdir	0.000	213.000	191.893	360.000	8
wdev	0.000	28.000	29.612	78.000	8
gspd	0.000	10.500	11.387	46.500	9
s10t	30.400	53.200	52.609	85.800	2308

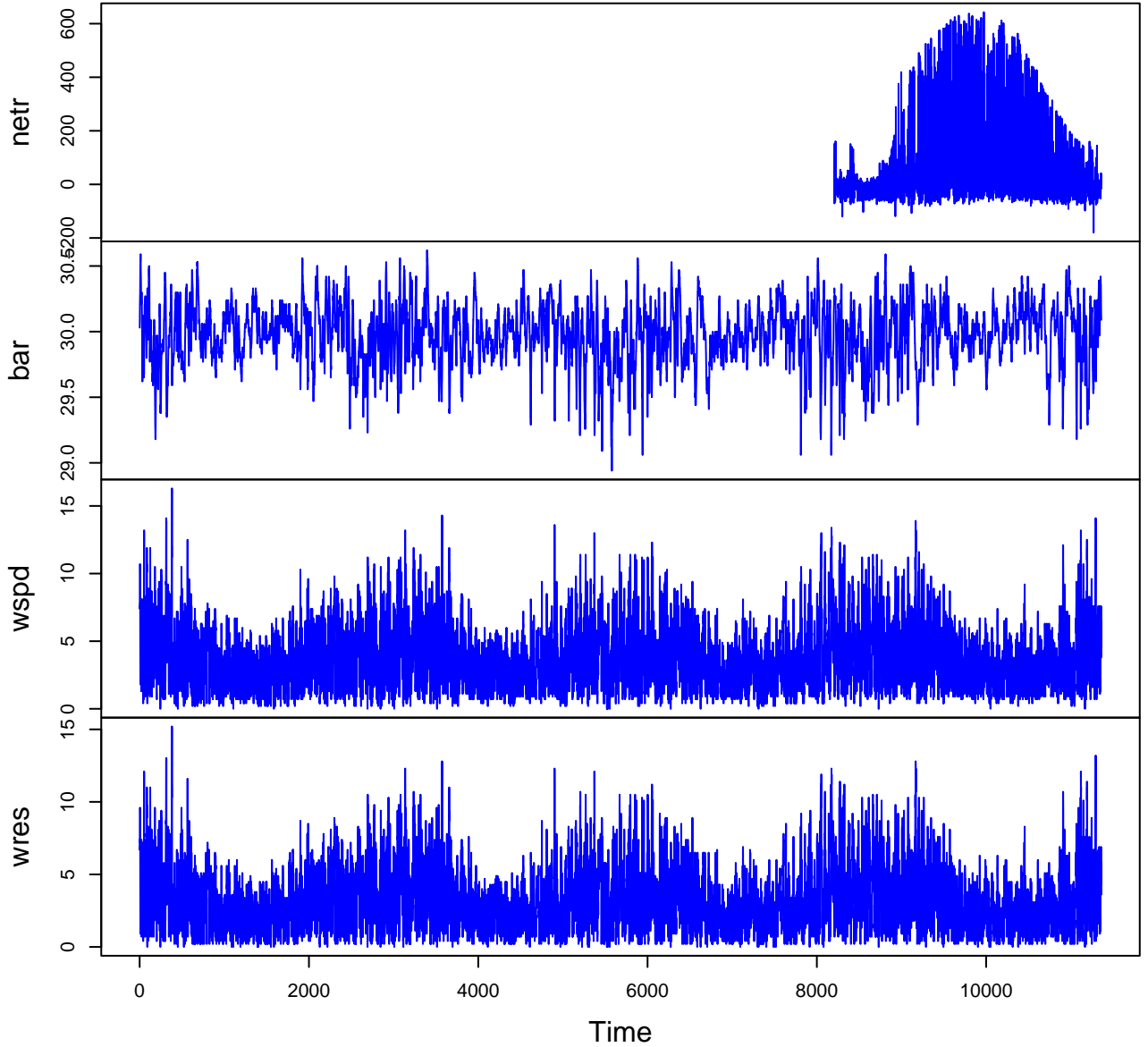
HF001-09 Plot 1



HF001-09 Plot 2



HF001-09 Plot 3



HF001-09 Plot 4

