

Harvard Forest Data Archive HF045-03

Data File:

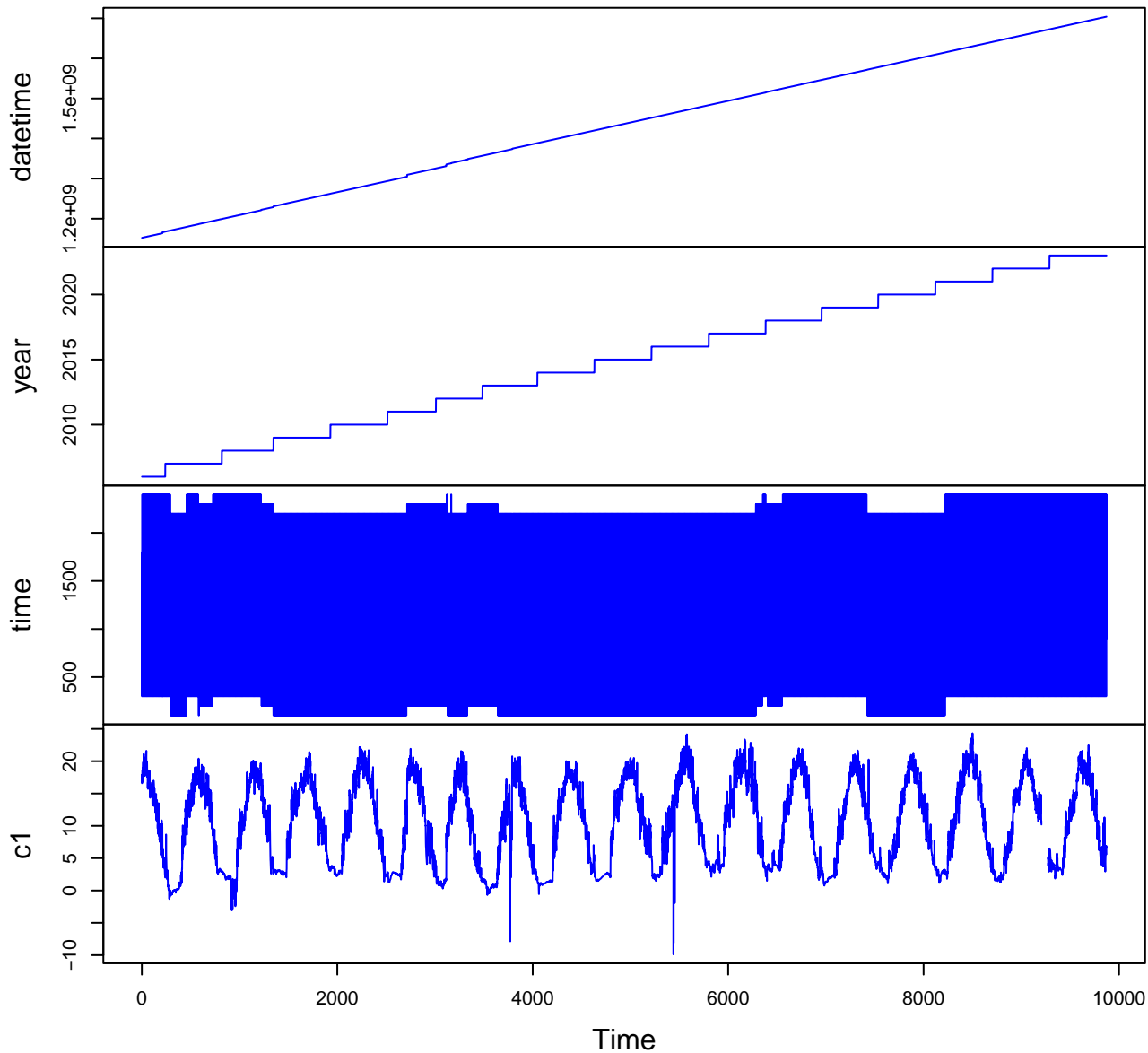
Name = hf045-03-soil-temp.csv  
Description = soil temperature  
Rows = 148075 Columns = 31  
MD5 checksum = 00fc69ce64d09ac51c41deb86c31ade6

Variables:

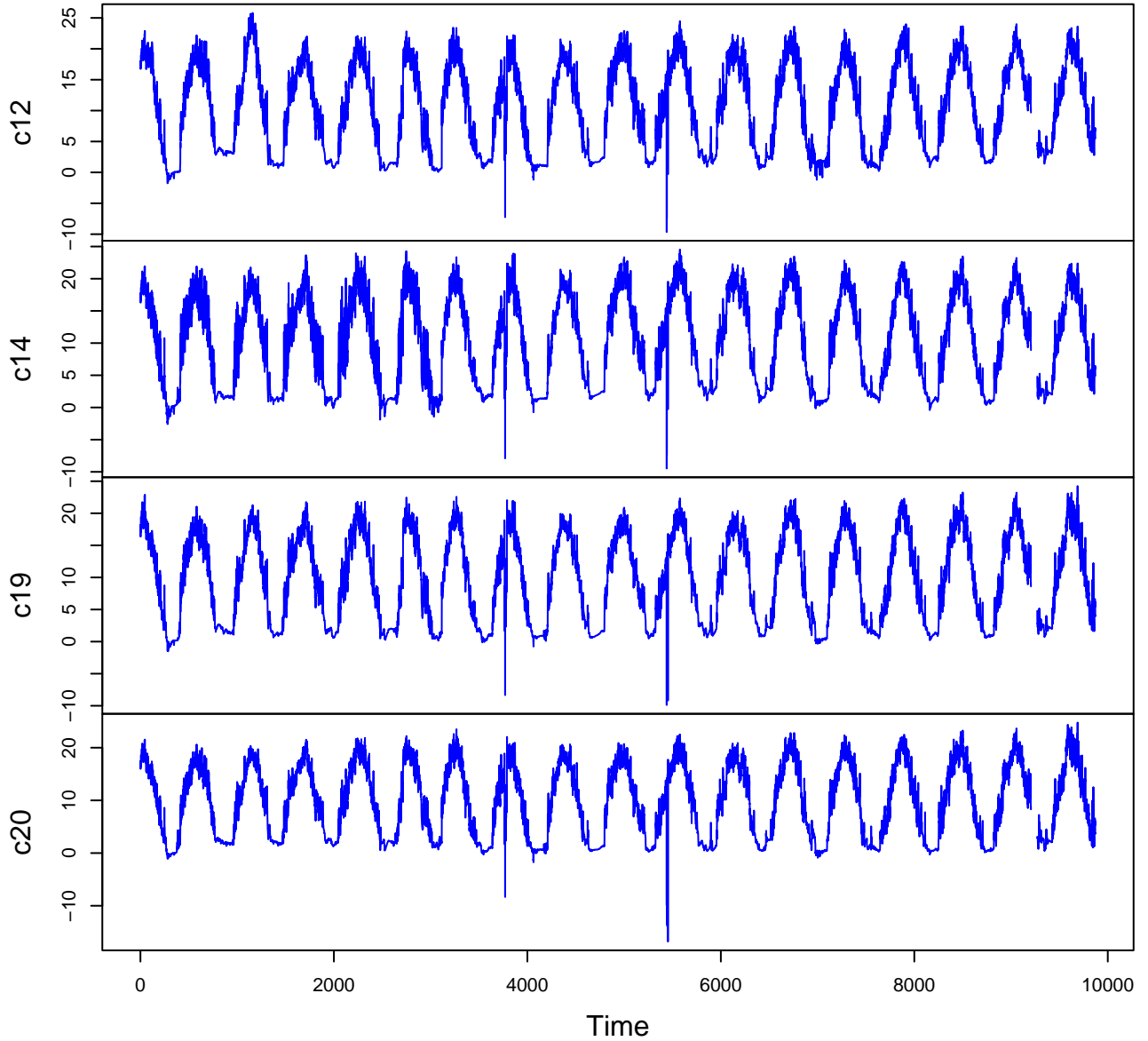
datetime = date and time  
year = year  
time = time of measurement (number)  
c1 = temperature (°C) measured at 5cm depth (celsius)  
c12 = temperature (°C) measured at 5cm depth (celsius)  
c14 = temperature (°C) measured at 5cm depth (celsius)  
c19 = temperature (°C) measured at 5cm depth (celsius)  
c20 = temperature (°C) measured at 5cm depth (celsius)  
c24 = temperature (°C) measured at 5cm depth (celsius)  
n6 = temperature (°C) measured at 5cm depth (celsius)  
n9 = temperature (°C) measured at 5cm depth (celsius)  
n21 = temperature (°C) measured at 5cm depth (celsius)  
h2 = temperature (°C) measured at 5cm depth (celsius)  
h5 = temperature (°C) measured at 5cm depth (celsius)  
h8 = temperature (°C) measured at 5cm depth (celsius)  
h13 = temperature (°C) measured at 5cm depth (celsius)  
h18 = temperature (°C) measured at 5cm depth (celsius)  
h22 = temperature (°C) measured at 5cm depth (celsius)  
hn3 = temperature (°C) measured at 5cm depth (celsius)  
hn4 = temperature (°C) measured at 5cm depth (celsius)  
hn7 = temperature (°C) measured at 5cm depth (celsius)  
hn10 = temperature (°C) measured at 5cm depth (celsius)  
hn15 = temperature (°C) measured at 5cm depth (celsius)  
hn17 = temperature (°C) measured at 5cm depth (celsius)  
cmean = average temperature (°C) of control plots (celsius)  
nmean = average temperature (°C) of nitrogen plots (celsius)  
hmean = average temperature (°C) of heated plots (celsius)  
hnmean = average temperature (° C) of heated plus nitrogen  
plots  
(celsius)

Variable	Min	Median	Mean	Max	NAs
datetime	2006-07-06T00:00		2023-12-31T23:00		0
year	2006.000	2015.000	2014.895	2023.000	0
time	100.000	1300.000	1250.039	2400.000	0
c1	-14.050	10.300	10.242	24.330	958
c12	-13.950	10.440	10.331	26.260	958
c14	-14.040	10.370	10.181	25.520	958
c19	-14.520	9.850	9.723	24.430	958
c20	-18.830	9.900	9.712	24.990	958
c24	-14.910	10.670	10.579	27.650	958
n6	-14.130	10.690	10.613	26.530	958
n9	-14.150	10.410	10.331	29.320	958
n21	-14.930	10.610	10.393	26.490	958
h2	-12.450	14.960	14.871	30.180	958
h5	-12.150	15.320	15.310	31.840	962
h8	-11.910	15.140	15.101	31.620	960
h13	-12.990	15.170	15.069	30.950	961
h18	-19.050	14.730	14.637	29.420	1165
h22	-15.340	11.520	11.743	29.610	23815
hn3	-12.020	15.060	15.163	33.720	958
hn4	-12.070	15.030	15.052	31.220	964
hn7	-12.250	15.280	15.338	35.420	963
hn10	-12.060	14.950	15.076	30.170	960
hn15	-12.450	15.110	14.997	30.570	961
hn17	-15.270	14.990	14.909	30.710	994
cmean	-14.330	10.250	10.129	23.930	958
nmean	-14.400	10.580	10.446	25.270	958
hmean	-12.410	15.030	15.007	28.820	958
hnmean	-12.240	15.100	15.089	29.630	958

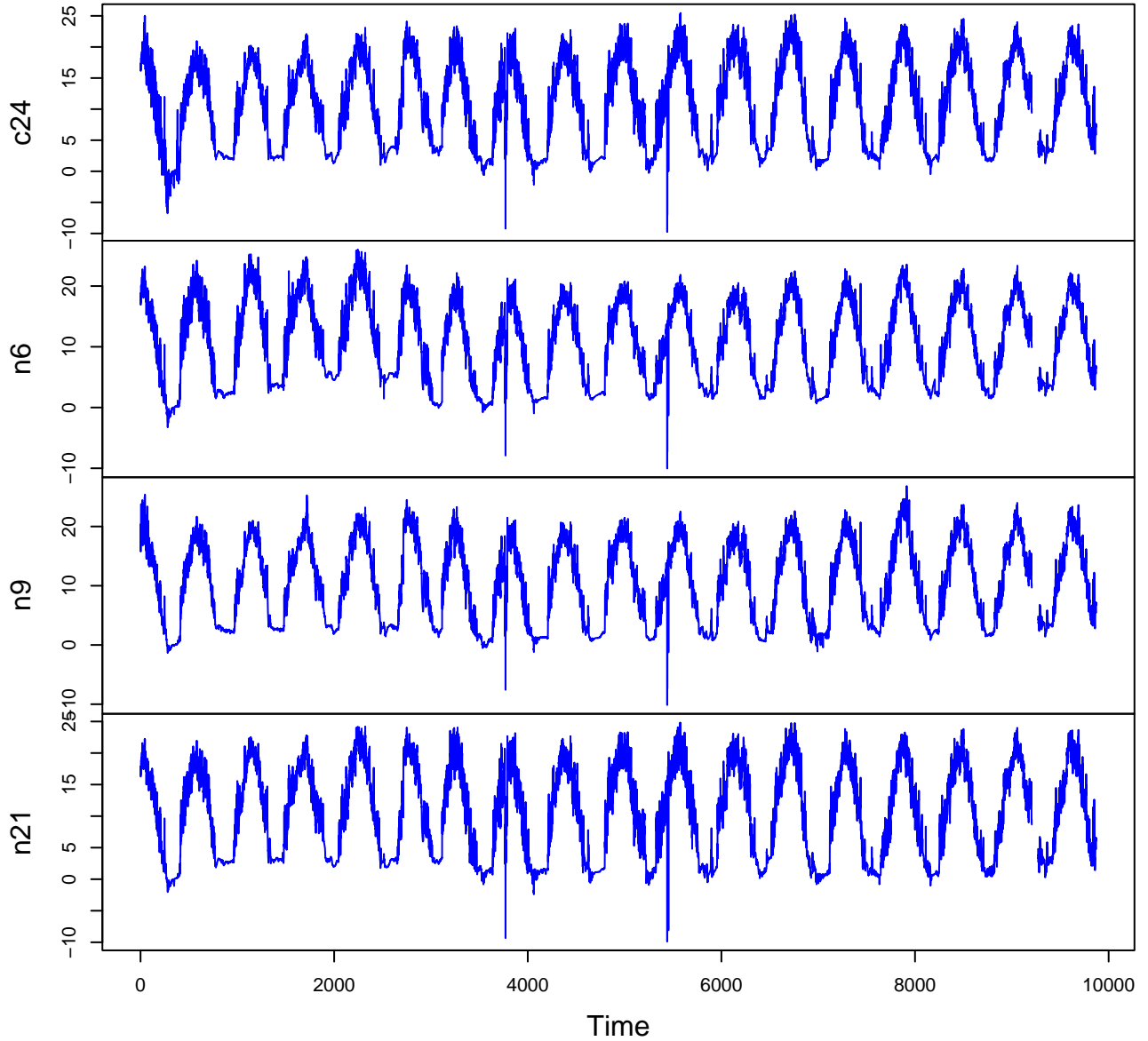
# HF045-03 Plot 1



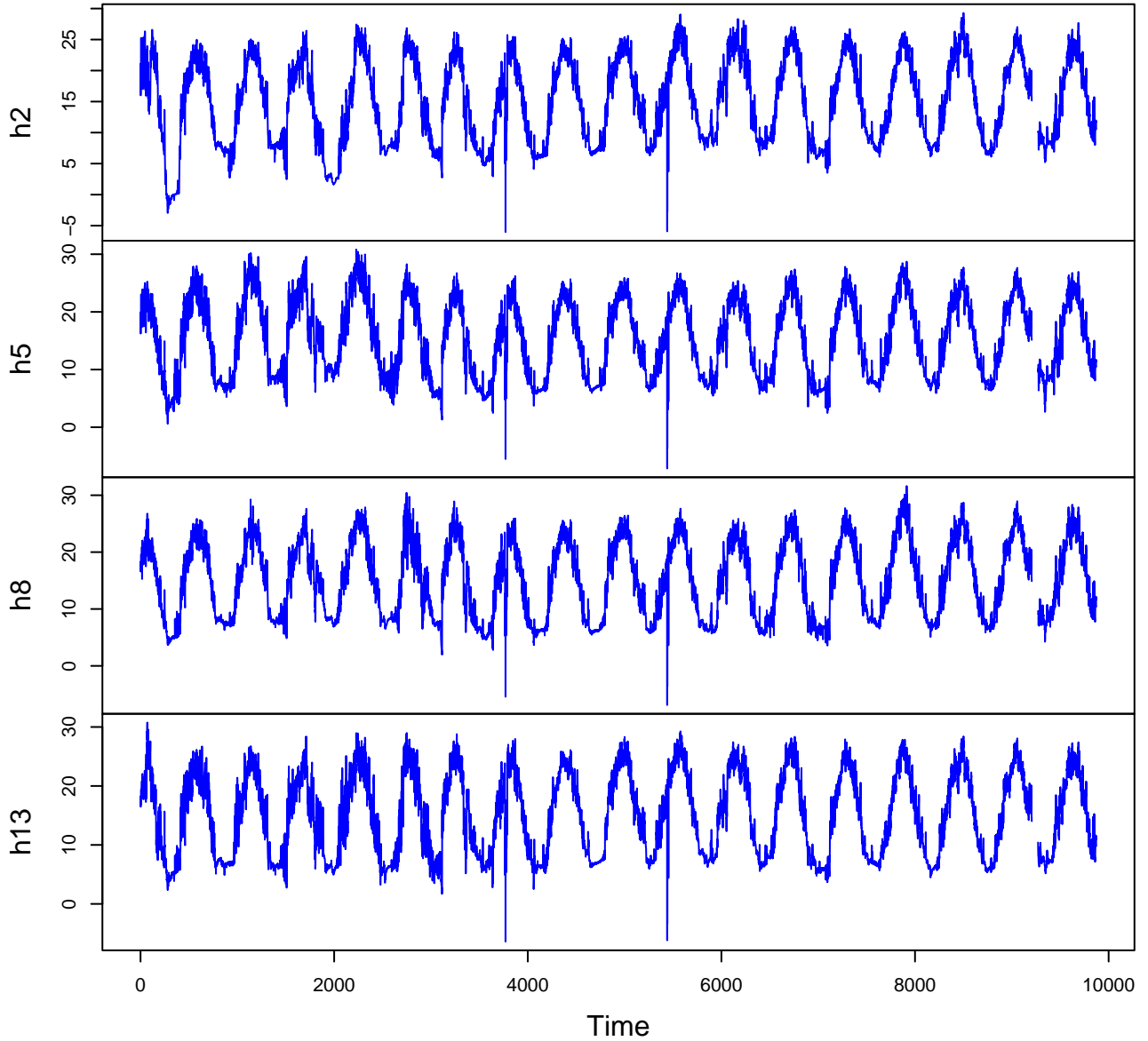
# HF045-03 Plot 2



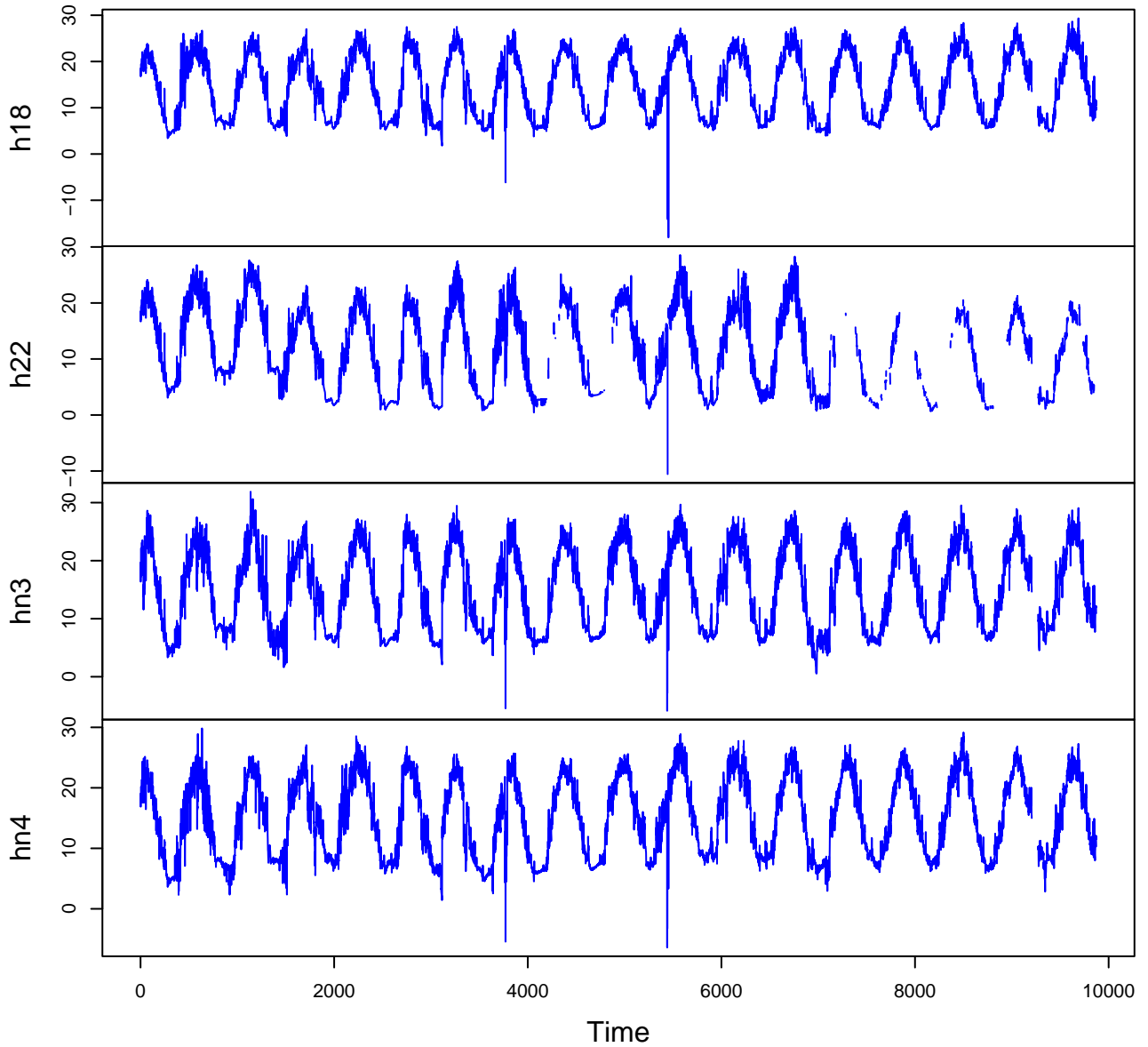
# HF045-03 Plot 3



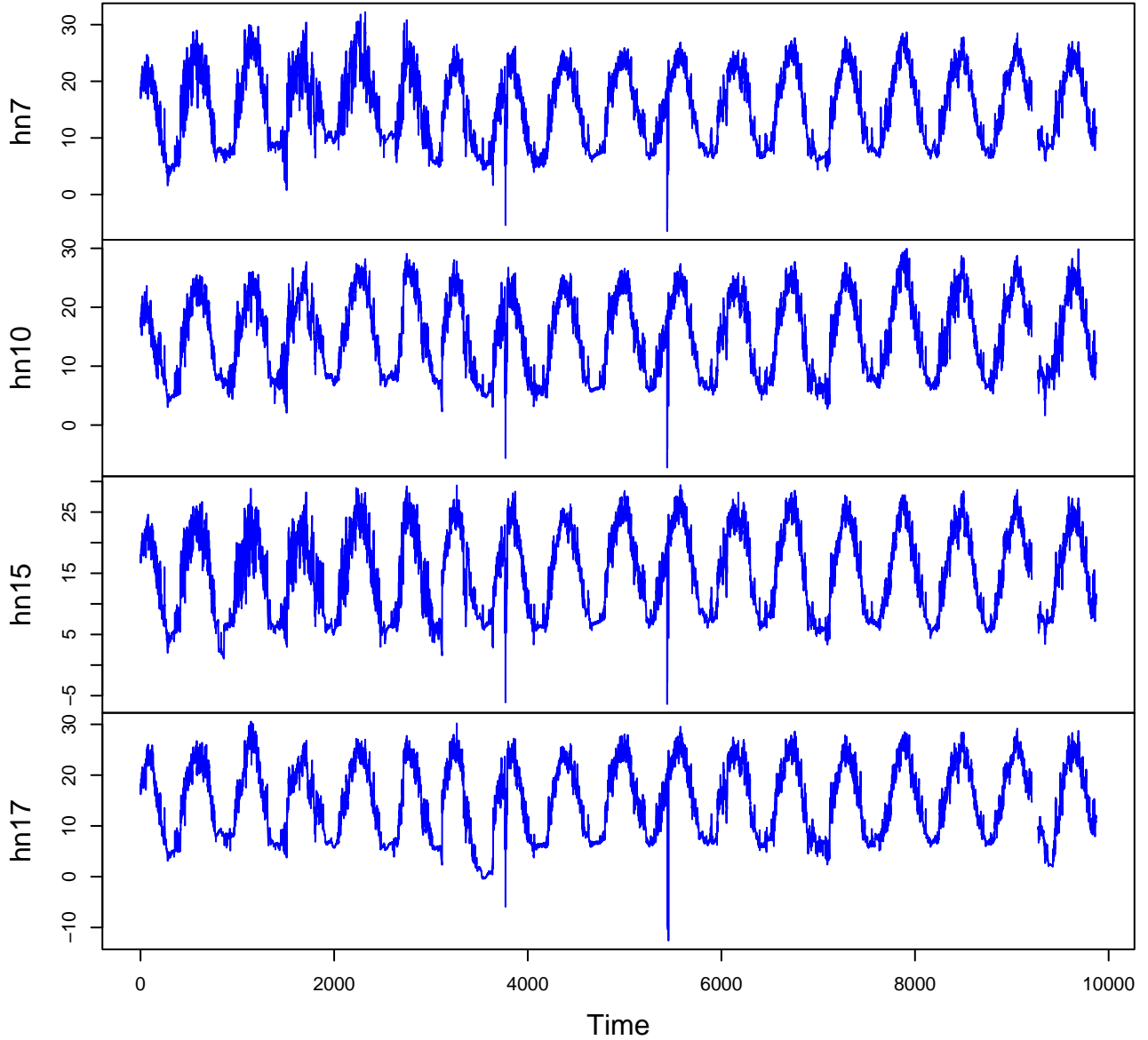
# HF045-03 Plot 4



# HF045-03 Plot 5



# HF045-03 Plot 6



# HF045-03 Plot 7

