

Harvard Forest Data Archive HF125-03

Data File:

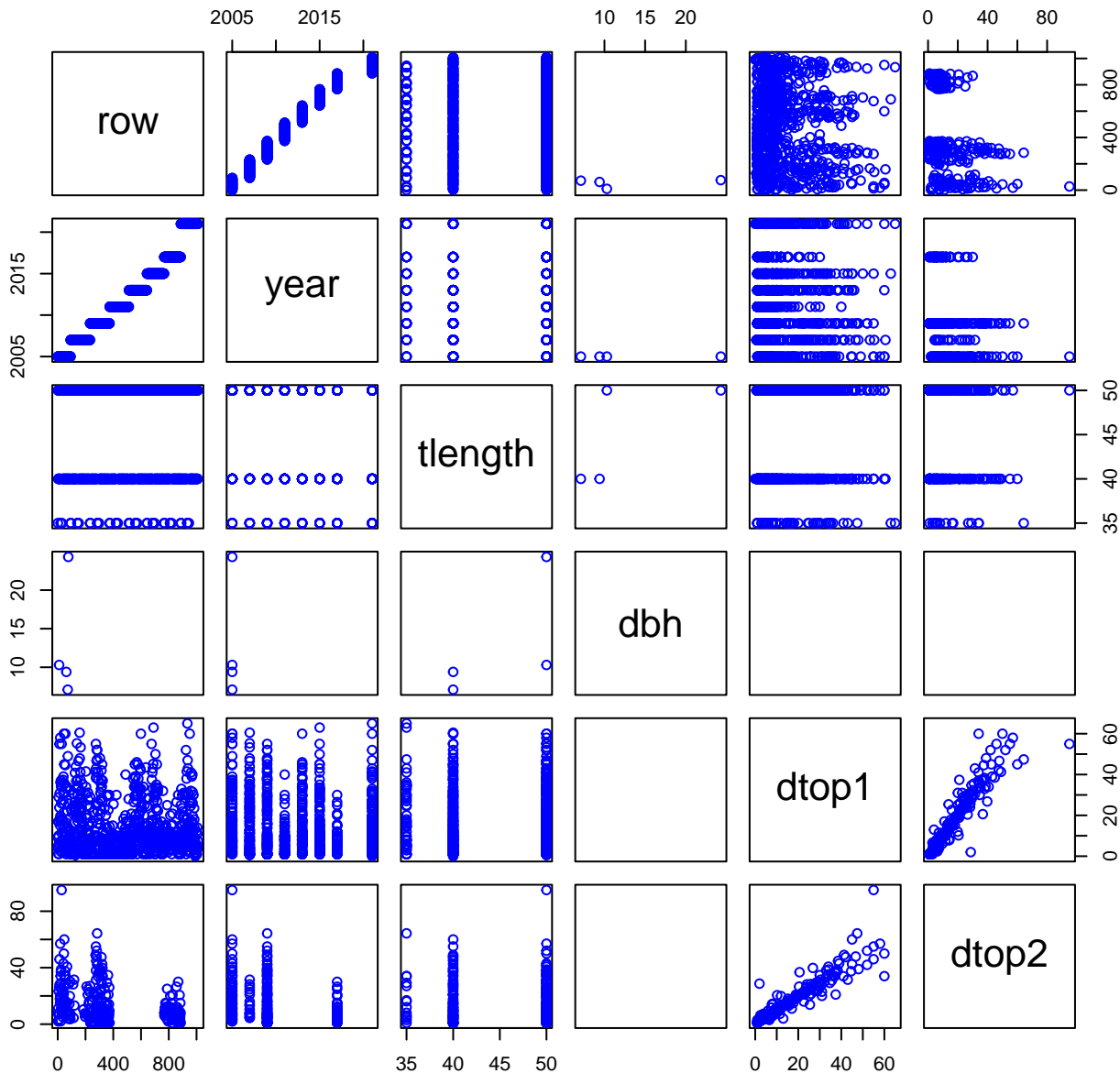
Name = hf125-03-snag.csv
Description = snags and stumps
Rows = 5044 Columns = 27
MD5 checksum = 1cfd0c23592e0e94b3a241acec6247af

Variables:

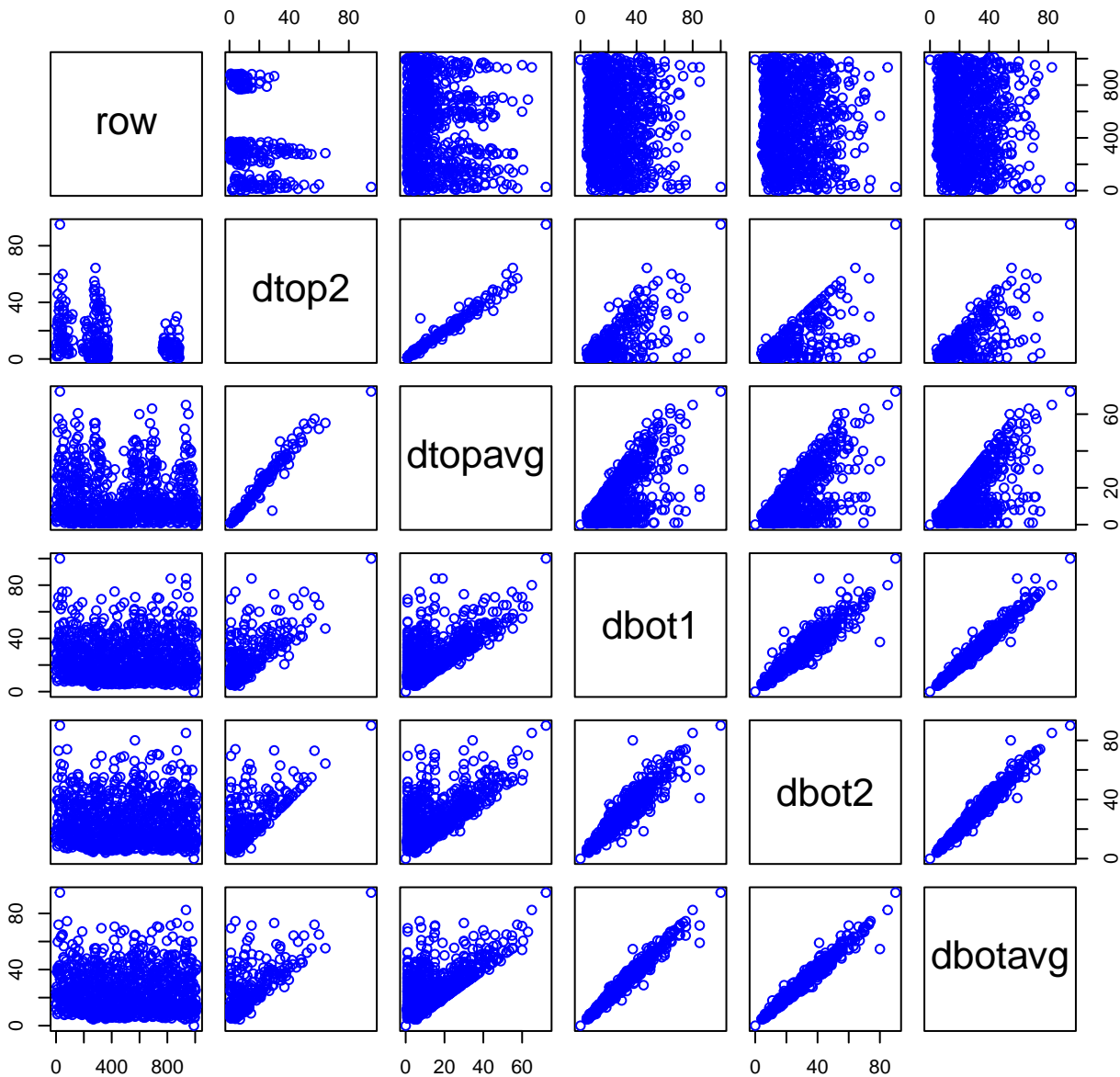
year = year
tlength = transect length (meter)
dbh = diameter at breast height used in allometric biomass equations
for intact trees in 2005 only (centimeter)
dtop1 = top diameter 1, measured with calipers or estimated visually
if beyond reach (centimeter)
dtop2 = top diameter 2, measured perpendicular to first diameter, if
possible (centimeter)
dtopavg = diameter average, formula: $\text{SQRT}(\text{diam1} * \text{diam2})$ (centimeter)
dbot1 = bottom diameter 1, measured with calipers (centimeter)
dbot2 = bottom diameter 2, measured perpendicular to first diameter,
if possible (e.g.; not possible if wood is sunk in ground)
(centimeter)
dbotavg = diameter average, formula: $\text{SQRT}(\text{diam1} * \text{diam2})$ (centimeter)
clindist = distance to tree used to calculate height with clinometer
(meter)
clinbot = bottom clinometer reading, percent scale, used to
calculate height with clinometer (dimensionless)
clintop = top clinometer reading, percent scale, used to calculate
height with clinometer (dimensionless)
clinht = snag/stump height, formula: $\text{tree height} =$
 $\text{clindist} * (\text{clintop} - \text{clinbot})$ (centimeter)
height = snag/stump height, copied from clinht or measured directly
with tape in field (centimeter)
volm3m2 = dead wood volume (meterCubedPerMeterSquared)
densitygcm3 = density by species and decay class; see methods; from
Liu et al. (2006) (centimeterCubed)
massgm2 = mass, formula: $\text{volumem3m2} * \text{densitygcm3}$
(gramsPerSquareMeter)

Variable	Min	Median	Mean	Max	NAs
year	2005.000	2011.000	2012.307	2021.000	0
tlength	35.000	50.000	45.017	50.000	15
dbh	0.000	13.000	13.974	29.600	5010
dtop1	0.000	9.500	13.573	90.000	550
dtop2	0.000	9.000	13.460	100.000	3601
dtopavg	0.000	9.500	13.538	94.868	550
dbot1	0.000	20.000	24.257	326.000	48
dbot2	0.000	20.000	23.945	189.000	116
dbotavg	0.000	20.100	24.019	109.545	48
clindist	0.000	13.000	13.712	30.000	3900
clinbot	-88.000	-15.000	-14.974	35.000	3900
clintop	0.000	86.000	83.952	150.000	3900
clinht	0.000	1287.500	1350.953	3060.000	3900
height	-900.000	70.000	436.703	3060.000	15
volm3m2	-0.003	0.000	0.001	0.025	15
densitygcm3	0.260	0.300	0.339	0.580	26
massgm2	-940.667	40.500	297.132	10033.369	16

HF125-03 Plot 1



HF125-03 Plot 2



HF125-03 Plot 4

