

Harvard Forest Data Archive HF183-01

Data File:

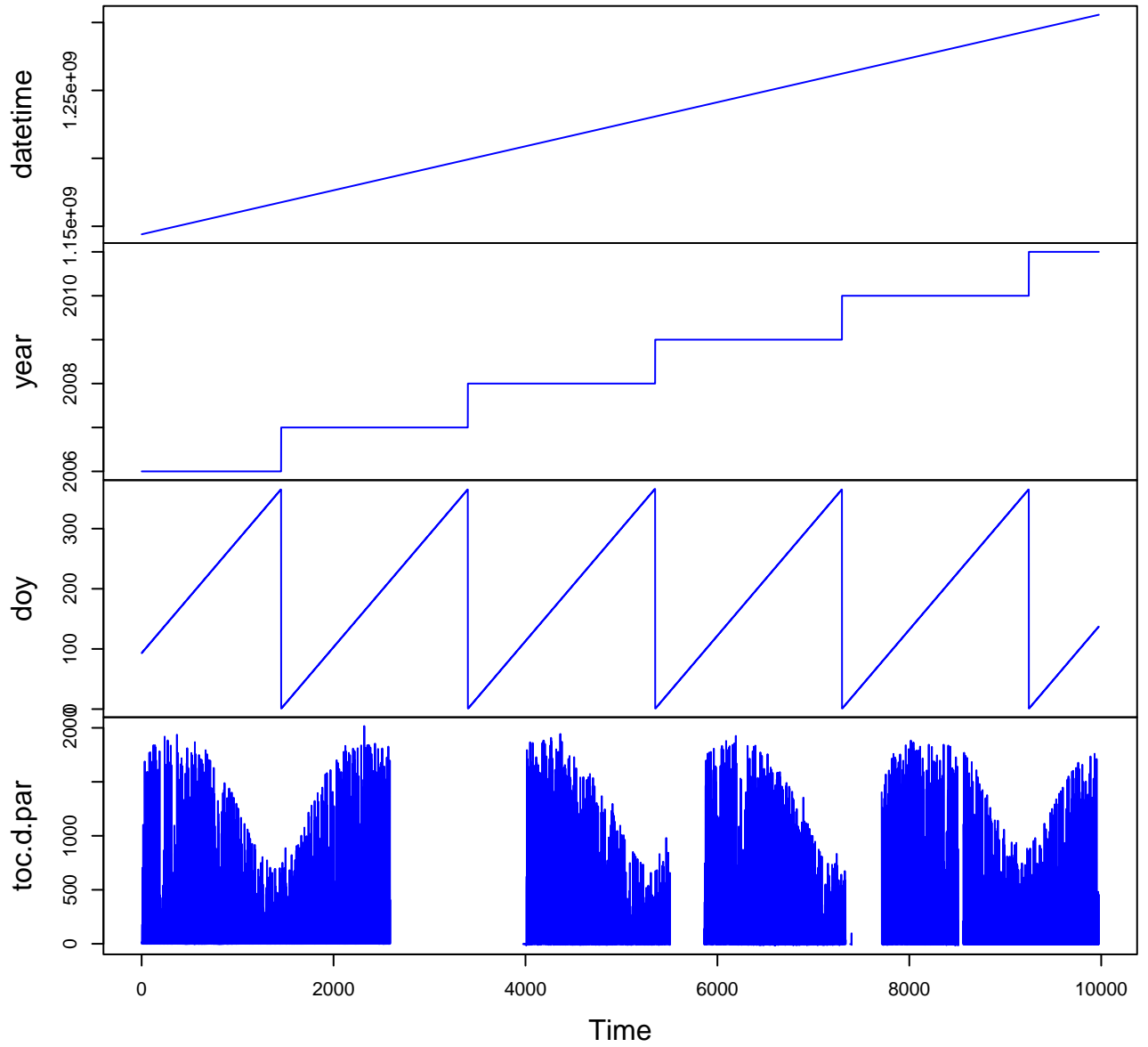
Name = hfl83-01-radiation.csv
Description = radiation data
Rows = 89773 Columns = 21
MD5 checksum = 85aa7877419d45fc3e3a5d81d5b95198

Variables:

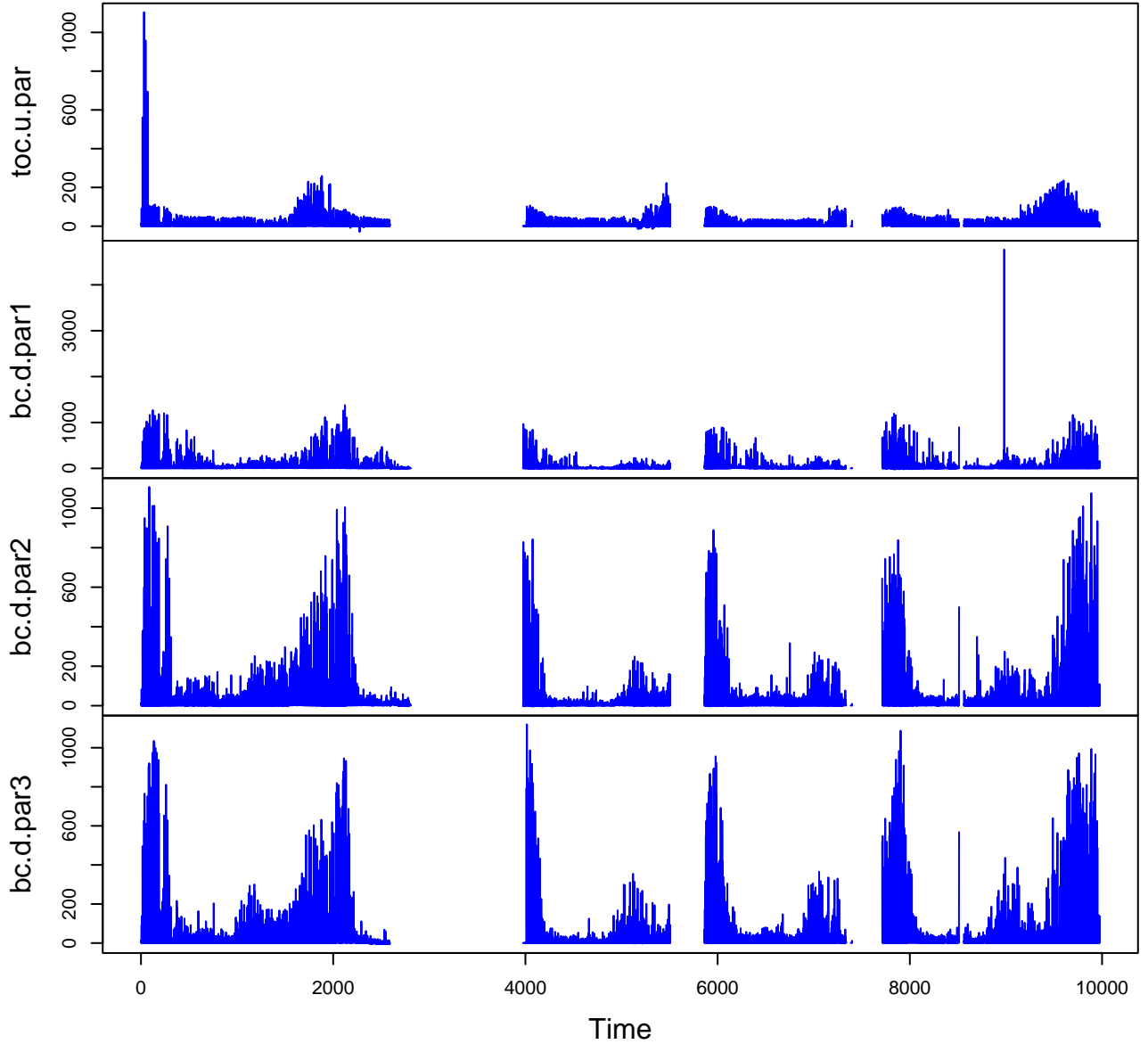
datetime = date and time
year = year
doy = day of year (nominalDay)
toc.d.par = top-of-canopy downwelling PAR
(micromolePerMeterSquaredPerSecond)
toc.u.par = top-of-canopy upwelling PAR
(micromolePerMeterSquaredPerSecond)
bc.d.par1 = below-canopy downwelling PAR 1
(micromolePerMeterSquaredPerSecond)
bc.d.par2 = below-canopy downwelling PAR 2
(micromolePerMeterSquaredPerSecond)
bc.d.par3 = below-canopy downwelling PAR 3
(micromolePerMeterSquaredPerSecond)
bc.d.par4 = below-canopy downwelling PAR 4
(micromolePerMeterSquaredPerSecond)
bc.d.par5 = below-canopy downwelling PAR 5
(micromolePerMeterSquaredPerSecond)
toc.d.pyr = top-of-canopy downwelling Pyranometer
(wattPerMeterSquared)
toc.u.pyr = top-of-canopy upwelling Pyranometer
(wattPerMeterSquared)
tsoil1 = soil temperature 1 (celsius)
tsoil2 = soil temperature 2 (celsius)
tsoil3 = soil temperature 3 (celsius)
tsoil4 = soil temperature 4 (celsius)
tair = air temperature (celsius)
tsr = total solar radiation (wattPerMeterSquared)
dsr = diffuse solar radiation (wattPerMeterSquared)

Variable	Min	Median	Mean	Max	NAs
datetime	2006-04-03T16:30		2011-05-17T22:30		0
year	2006.000	2008.000	2008.319	2011.000	0
doy	1.000	179.000	181.496	366.000	0
toc.d.par	-43.007	12.247	311.671	2053.900	19472
toc.u.par	-36.871	1.208	15.312	1125.000	19476
bc.d.par1	-23.514	4.545	51.698	4807.600	17535
bc.d.par2	-3746.500	2.134	43.304	1265.300	17534
bc.d.par3	-4086.200	1.836	48.056	1448.700	19471
bc.d.par4	-4765.600	2.153	54.613	1738.200	19471
bc.d.par5	-3.573	7.989	62.323	2054.200	17703
toc.d.pyr	-24.813	6.765	178.153	1857.400	17767
toc.u.pyr	-24.250	2.256	23.272	1692.800	17534
tsoil1	-2.720	10.100	10.081	20.760	42786
tsoil2	-2.866	10.520	10.177	21.560	42786
tsoil3	-2.831	10.350	10.269	22.220	42786
tsoil4	-2.920	10.360	10.130	20.190	42786
tair	-24.050	11.280	9.983	34.520	42786
tsr	-179.200	3.480	250.387	2475.000	42796
dsr	-240.000	0.567	98.172	1282.000	42786

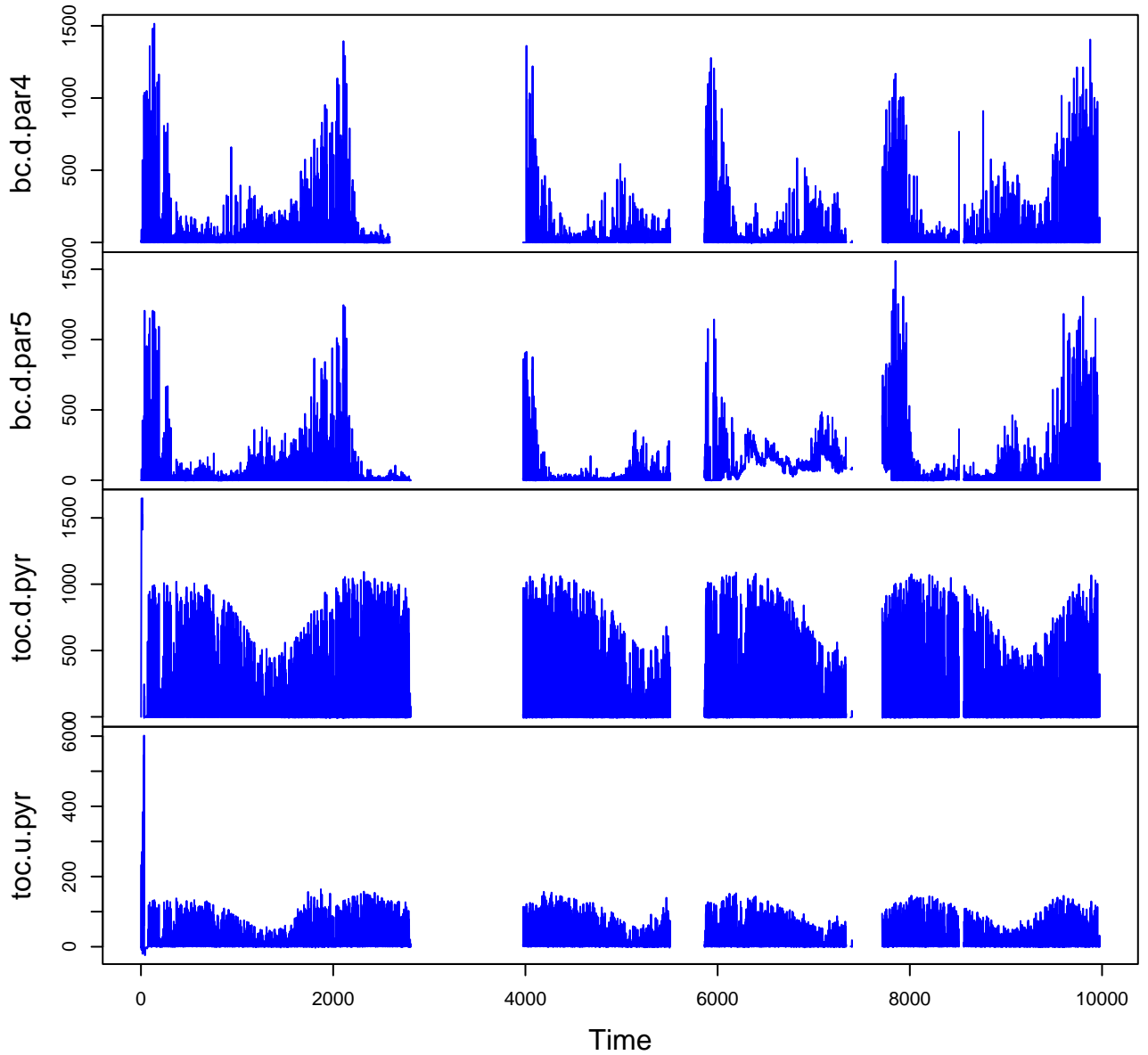
HF183-01 Plot 1



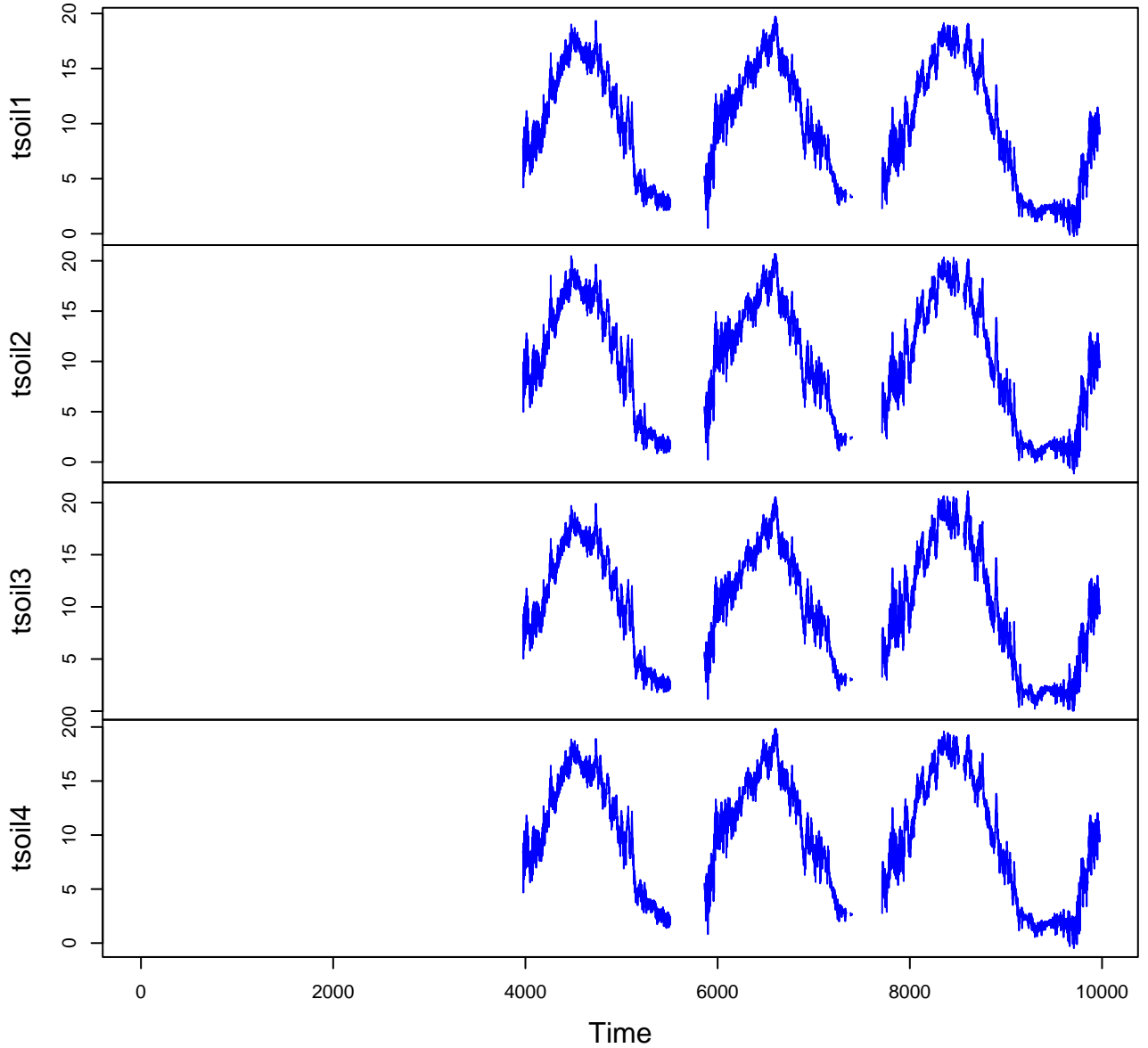
HF183-01 Plot 2



HF183-01 Plot 3



HF183-01 Plot 4



HF183-01 Plot 5

