

Harvard Forest Data Archive HF206-04

Data File:

Name = hf206-04-LPH-understory-2005-2010.csv
Description = LPH understory, 2005-2010
Rows = 89713 Columns = 36
MD5 checksum = d7bd89c636b0a650f29779b0a625dcf4

Variables:

year = year
datetime = date and time (EST)
dec_date = decimal day, with hour of day converted to a fraction of
a
day (nominalDay)
doy = day of year (nominalDay)
dec_hour = decimal hour (nominalHour)
us_par1 = understory photosynthetically active radiation 1, measured
by the
LPH225 datalogger (micromolePerMeterSquaredPerSecond)
us_par2 = understory photosynthetically active radiation 2, measured
by the
LPH225 datalogger (micromolePerMeterSquaredPerSecond)
us_par3 = understory photosynthetically active radiation 3, measured
by the
LPH225 datalogger (micromolePerMeterSquaredPerSecond)
us_par4 = understory photosynthetically active radiation 1, measured
by the
LPH300 datalogger (micromolePerMeterSquaredPerSecond)
us_par5 = understory photosynthetically active radiation 2, measured
by the
LPH300 datalogger (micromolePerMeterSquaredPerSecond)
us_par6 = understory photosynthetically active radiation 3, measured
by the
LPH300 datalogger (micromolePerMeterSquaredPerSecond)
tsoil1 = understory soil temperature 1, measured at 10cm depth by
the LPH225
datalogger (celsius)
tsoil2 = understory soil temperature 2, measured at 10cm depth by
the LPH225
datalogger (celsius)
tsoil3 = understory soil temperature 3, measured at 10cm depth by
the LPH225
datalogger (celsius)
tsoil4 = understory soil temperature 4, measured at 10cm depth by
the LPH225
datalogger (celsius)
tsoil5 = understory soil temperature 5, measured at 10cm depth by
the LPH225
datalogger (celsius)
tsoil6 = understory soil temperature 1, measured at 10cm depth by
the LPH300
datalogger (celsius)
tsoil7 = understory soil temperature 2, measured at 10cm depth by
the LPH300
datalogger (celsius)
tsoil8 = understory soil temperature 3, measured at 10cm depth by
the LPH300
datalogger (celsius)

tsoil9 = understory soil temperature 4, measured at 10cm depth by
the LPH300
datalogger (celsius)

tlitter1 = understory organic soil temperature 1, measured at 2cm
depth by the
LPH300 datalogger (celsius)

tlitter2 = understory organic soil temperature 2, measured at 2cm
depth by the
LPH300 datalogger (celsius)

tlitter3 = understory organic soil temperature 3, measured at 2cm
depth by the
LPH300 datalogger (celsius)

tlitter4 = understory organic soil temperature 4, measured at 2cm
depth by the
LPH300 datalogger (celsius)

us_tair_south20cm = understory air temperature south, measured at
20cm by the LPH225
datalogger (celsius)

us_tair_north20cm = understory air temperature north, measured at
20cm by the LPH225
datalogger (celsius)

us_tair_south1m = understory air temperature south, measured at 1m
by the LPH225
datalogger (celsius)

us_tair_north1m = understory air temperature north, measured at 1m
by the LPH225
datalogger (celsius)

us_tair2_south20cm = understory air temperature south, measured at
20cm by the LPH300
datalogger (celsius)

us_tair2_north20cm = understory air temperature north, measured at
20cm by the LPH300
datalogger (celsius)

us_tair2_south1m = understory air temperature south, measured at 1m
by the LPH300
datalogger (celsius)

us_tair2_north1m = understory air temperature north, measured at 1m
by the LPH300
datalogger (celsius)

vw1 = soil water content 1, measured by the LPH225
datalogger
(dimensionless)

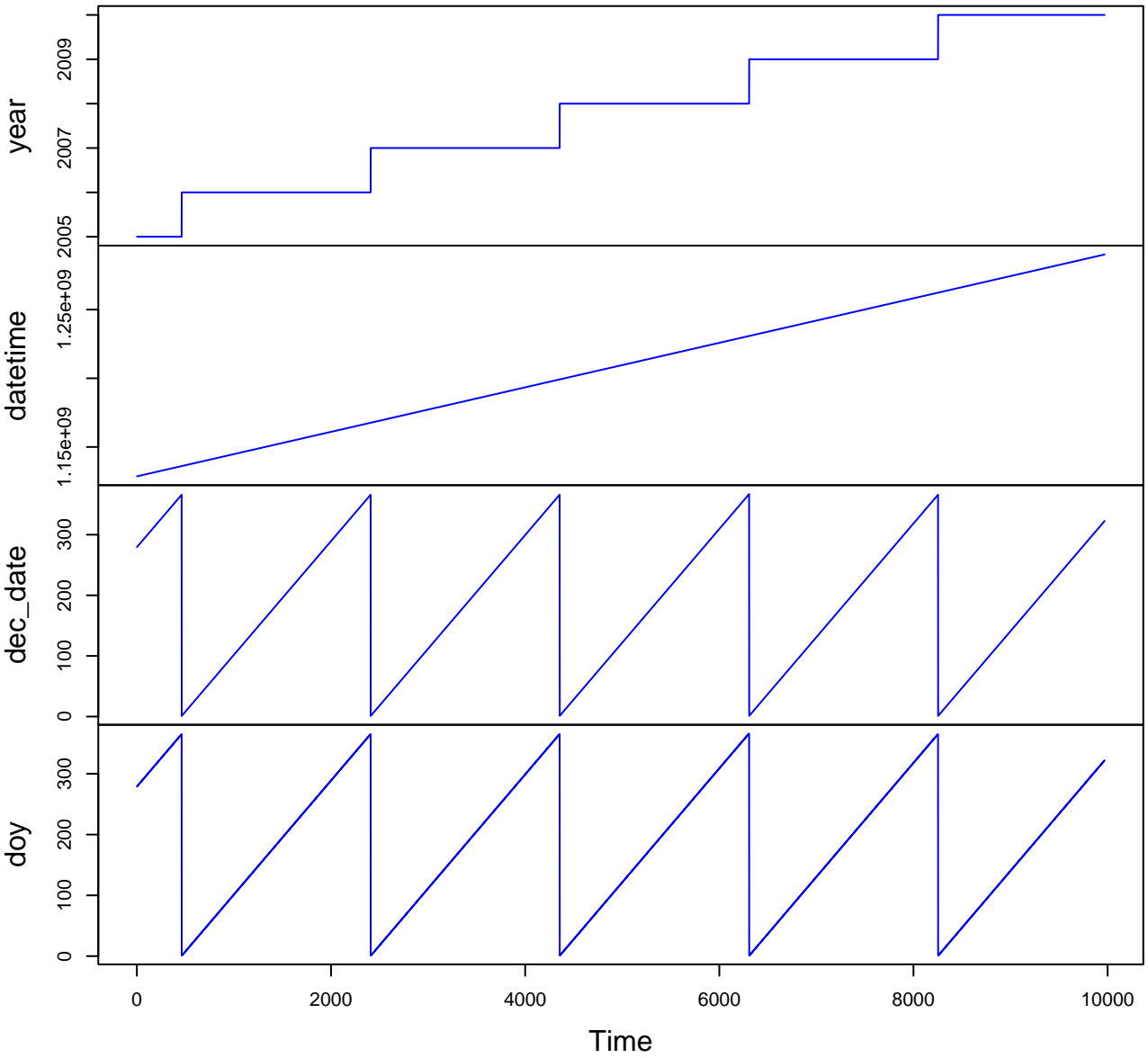
vw2 = soil water content 2, measured by the LPH225
datalogger
(dimensionless)

vw3 = soil water content 1, measured by the LPH300
datalogger
(dimensionless)

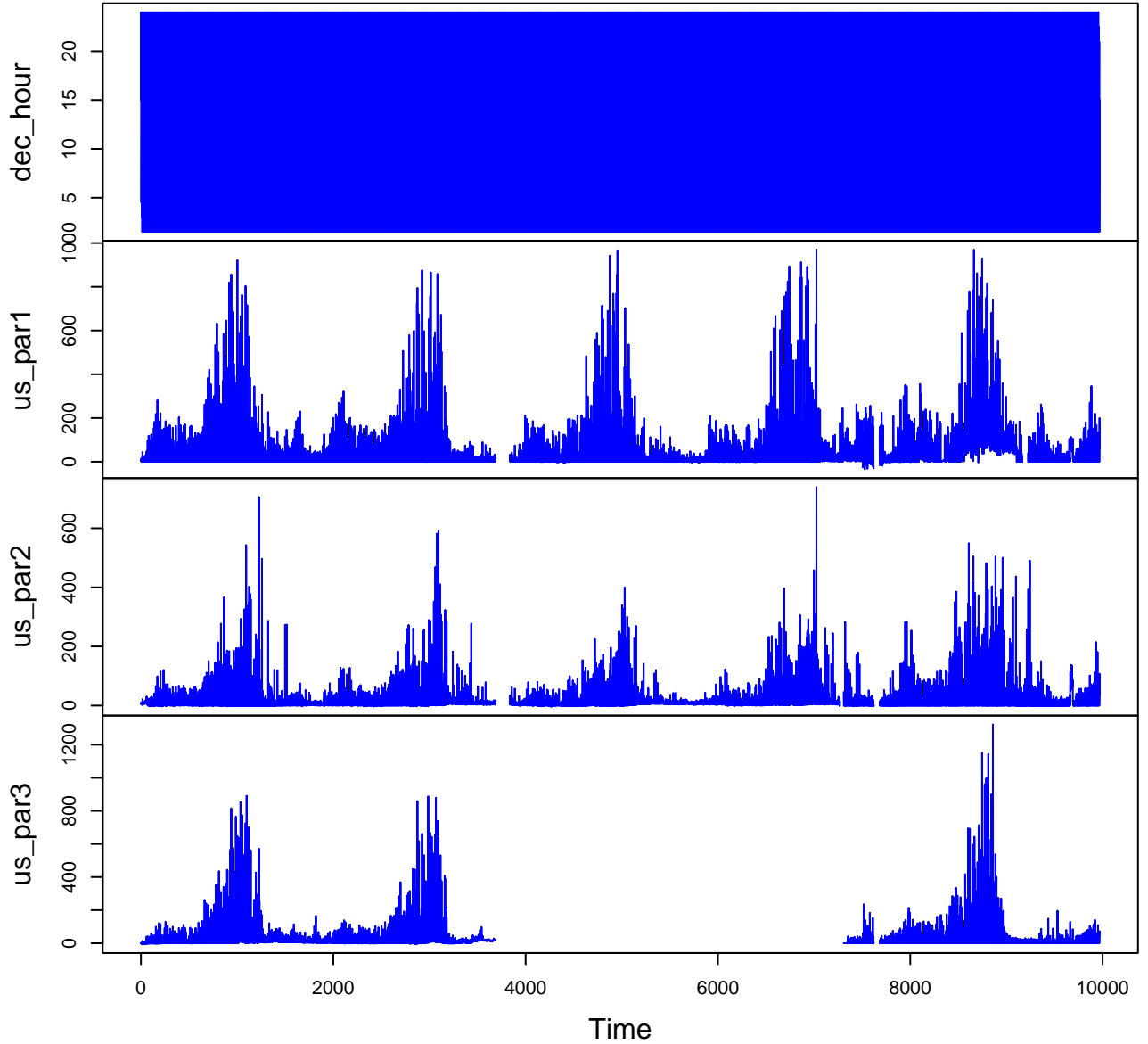
vw4 = soil water content 2, measured by the LPH300
datalogger
(dimensionless)

Variable	Min	Median	Mean	Max	NAs
year	2005.000	2008.000	2007.815	2010.000	0
datetime	2005-10-06T15:00			2010-11-18T15:00	0
dec_date	1.021	187.917	186.316	367.000	0
doy	1.000	187.000	185.805	366.000	0
dec_hour	0.500	12.500	12.250	24.000	0
us_par1	-51.710	3.242	42.817	1131.000	2895
us_par2	-4.271	4.098	20.752	762.000	2242
us_par3	-5.876	4.848	33.344	1323.000	33146
us_par4	-859.000	2.255	38.149	1278.000	1534
us_par5	-426.100	1.270	26.685	1360.000	937
us_par6	-8.470	0.846	45.686	1217.000	53300
tsoil1	-0.789	8.460	8.683	23.830	1930
tsoil2	-0.697	8.640	8.841	23.610	1930
tsoil3	-0.376	8.640	8.852	24.770	1930
tsoil4	-0.557	8.750	8.890	20.660	1930
tsoil5	-1.728	8.430	8.543	21.660	1930
tsoil6	-1.504	8.690	8.879	33.960	991
tsoil7	-1.901	9.180	9.152	24.050	11133
tsoil8	-4.291	9.310	9.069	23.800	11223
tsoil9	-0.498	9.370	9.169	22.560	11223
tlitter1	-7.820	9.270	8.890	24.740	15253
tlitter2	-5.890	9.210	8.722	30.810	18751
tlitter3	-5.165	9.200	8.874	24.300	18751
tlitter4	-9.780	9.340	8.858	28.230	18751
us_tair_sout	-20.900	8.300	7.802	32.620	1930
us_tair_nort	-20.860	8.070	7.858	35.280	1930
us_tair_sout	-20.370	8.030	7.653	33.920	1930
us_tair_nort	-21.040	8.280	7.839	33.750	1930
us_tair2_sou	-21.290	8.440	7.828	34.230	810
us_tair2_nor	-21.340	8.310	7.794	36.260	811
us_tair2_sou	-21.280	8.590	7.965	34.200	810
us_tair2_nor	-21.880	8.470	7.882	34.840	810
vwc1	-0.004	0.184	0.171	0.366	65964
vwc2	0.052	0.161	0.152	0.346	76497
vwc3	0.041	0.197	0.181	0.342	65434
vwc4	0.045	0.164	0.151	0.377	65434

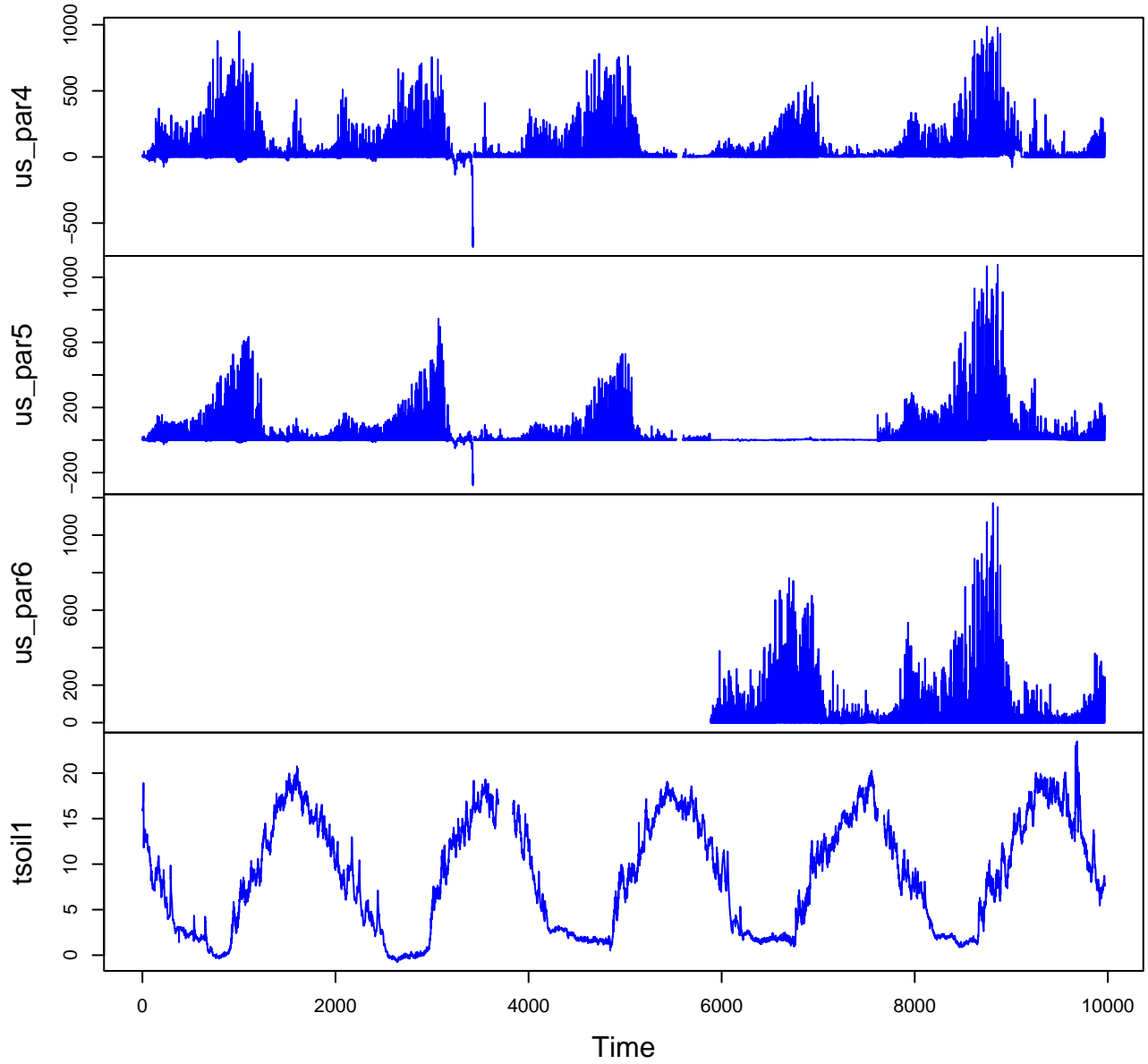
HF206-04 Plot 1



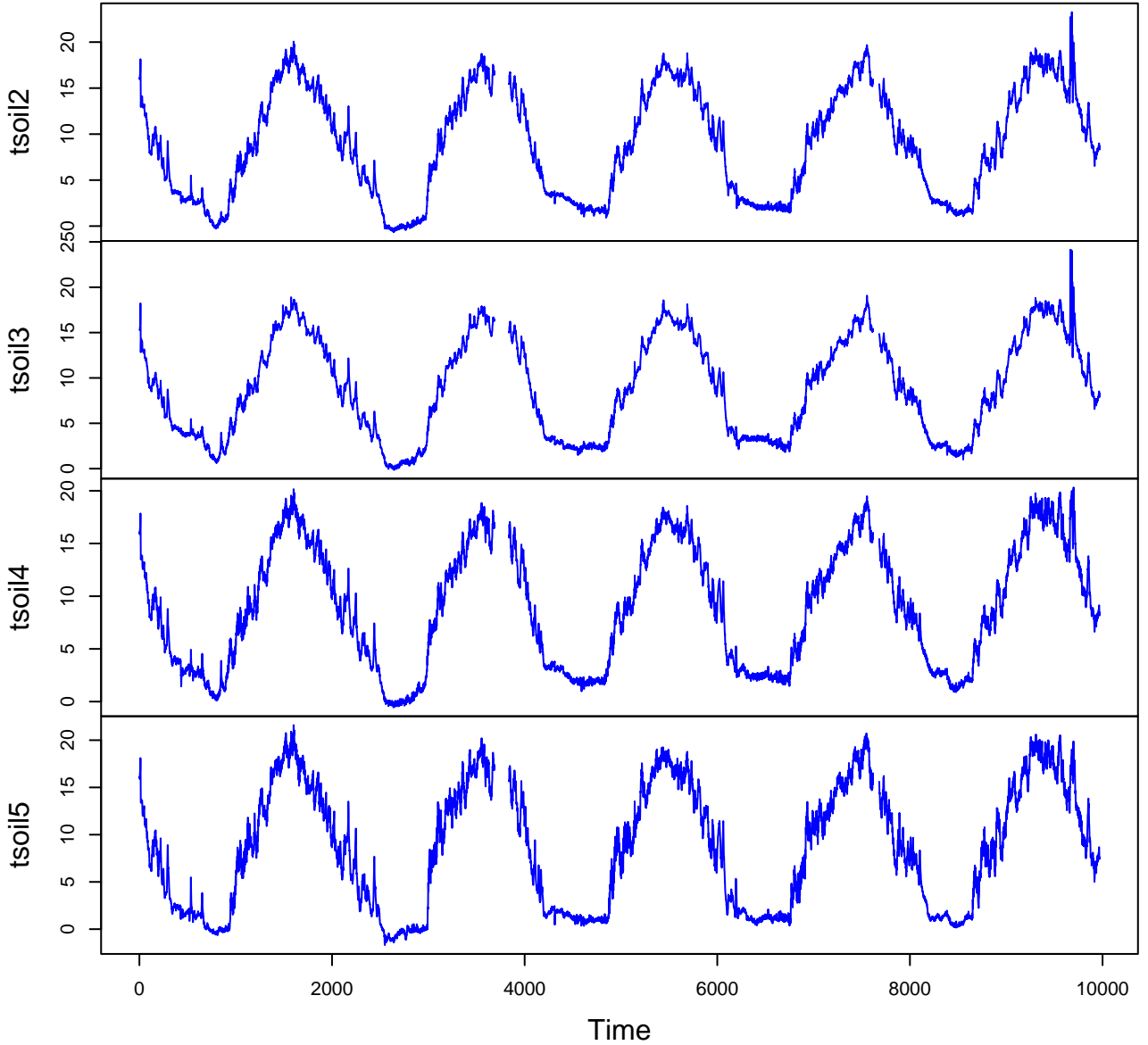
HF206-04 Plot 2



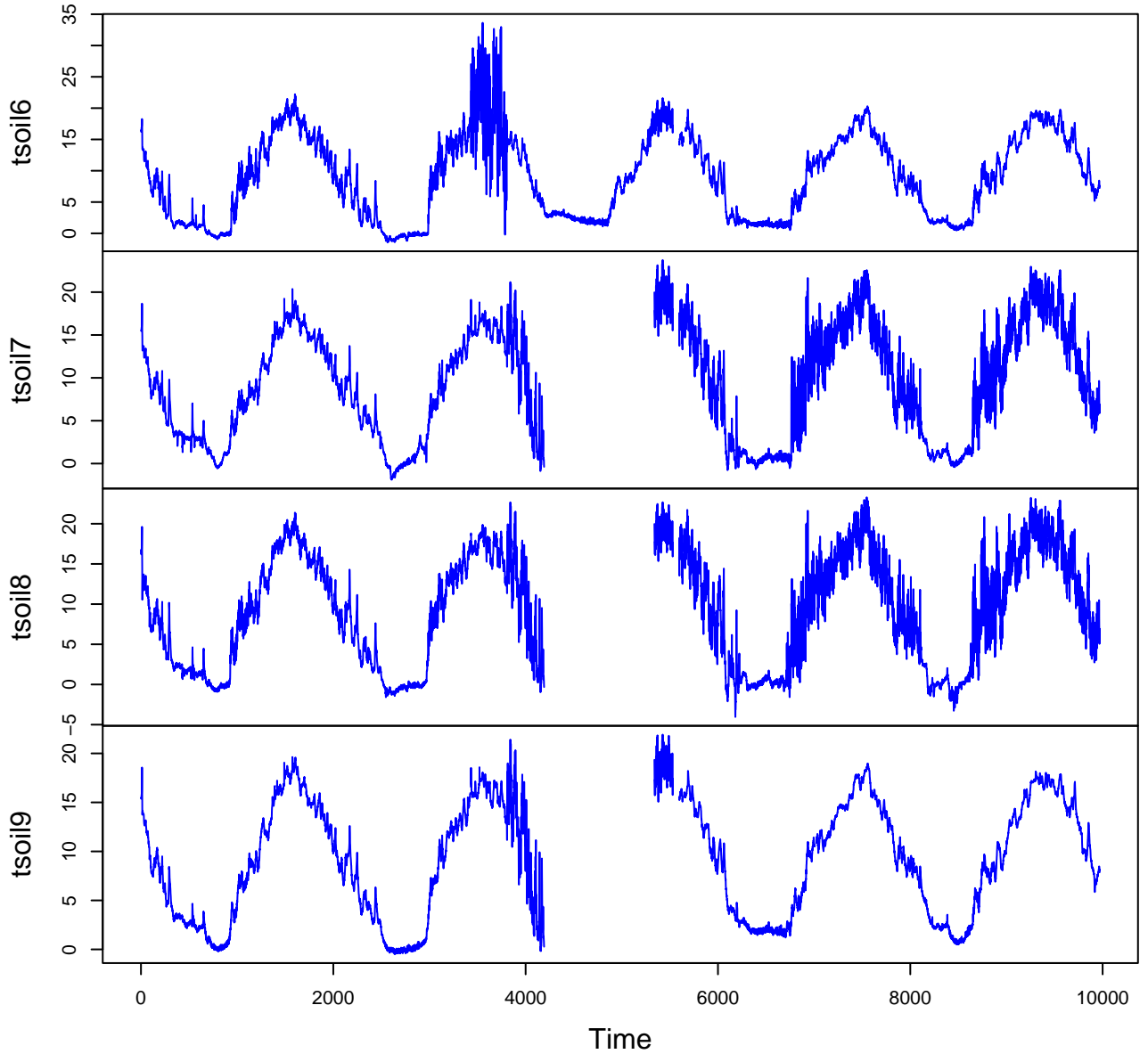
HF206-04 Plot 3



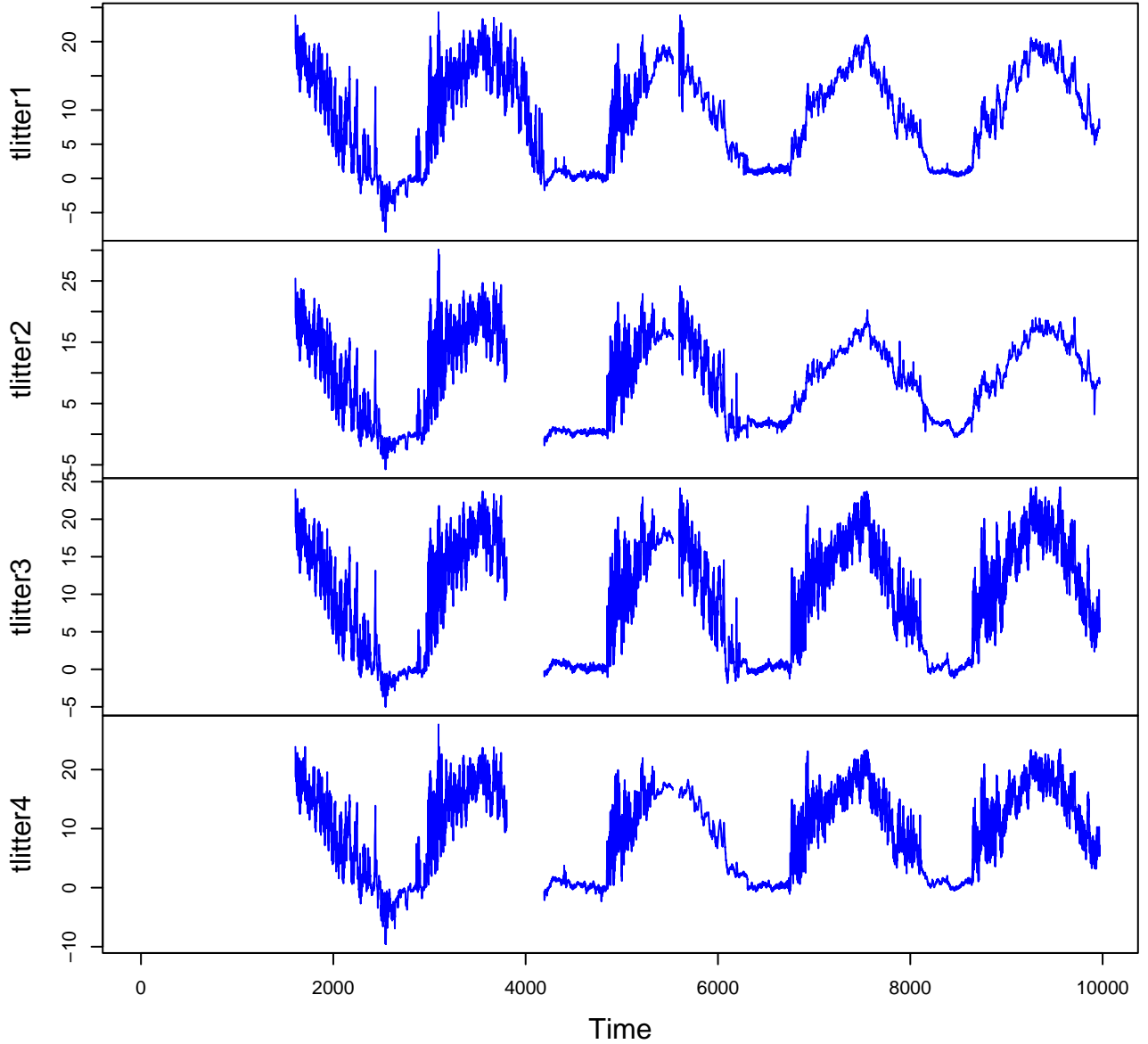
HF206-04 Plot 4



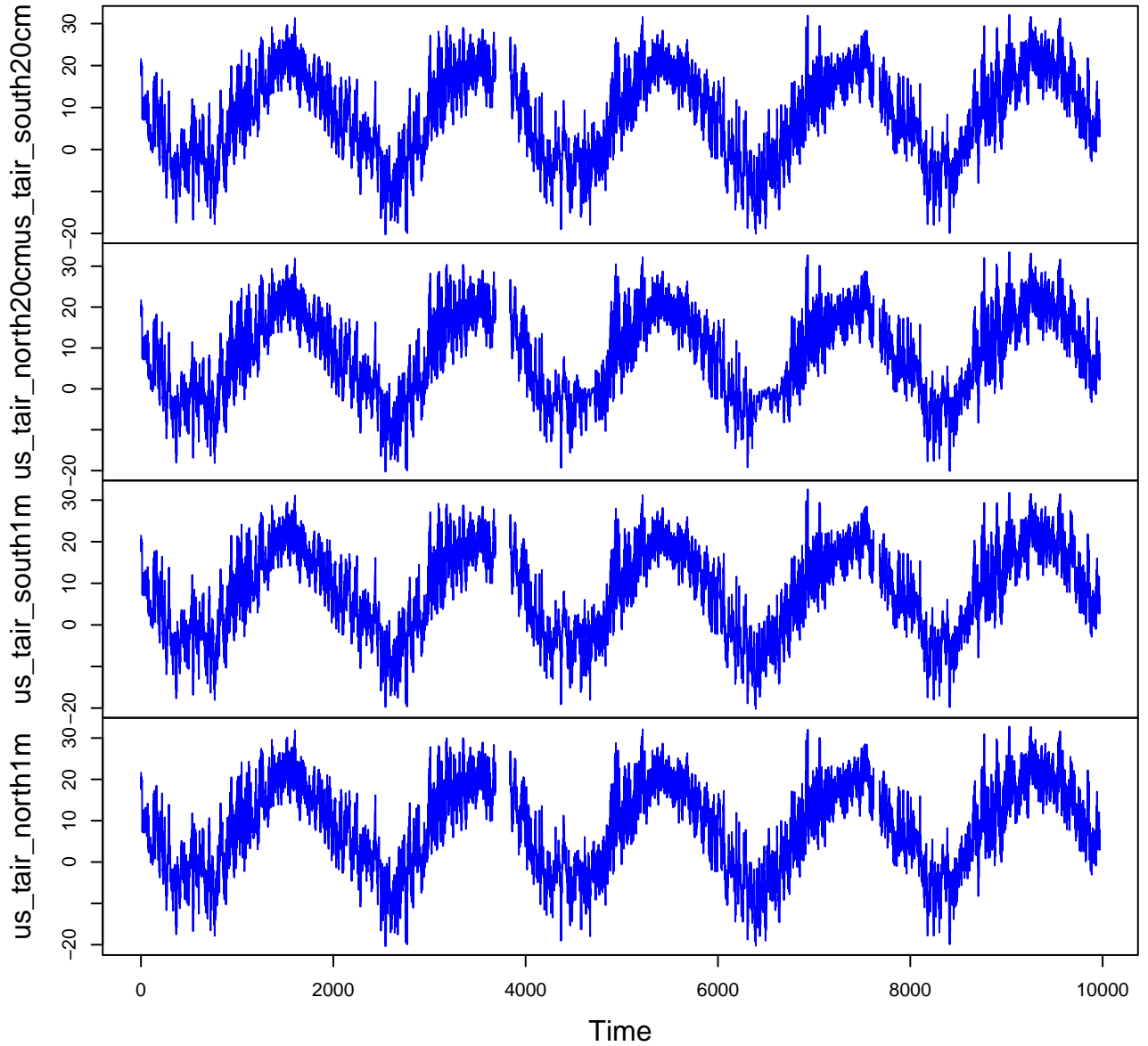
HF206-04 Plot 5



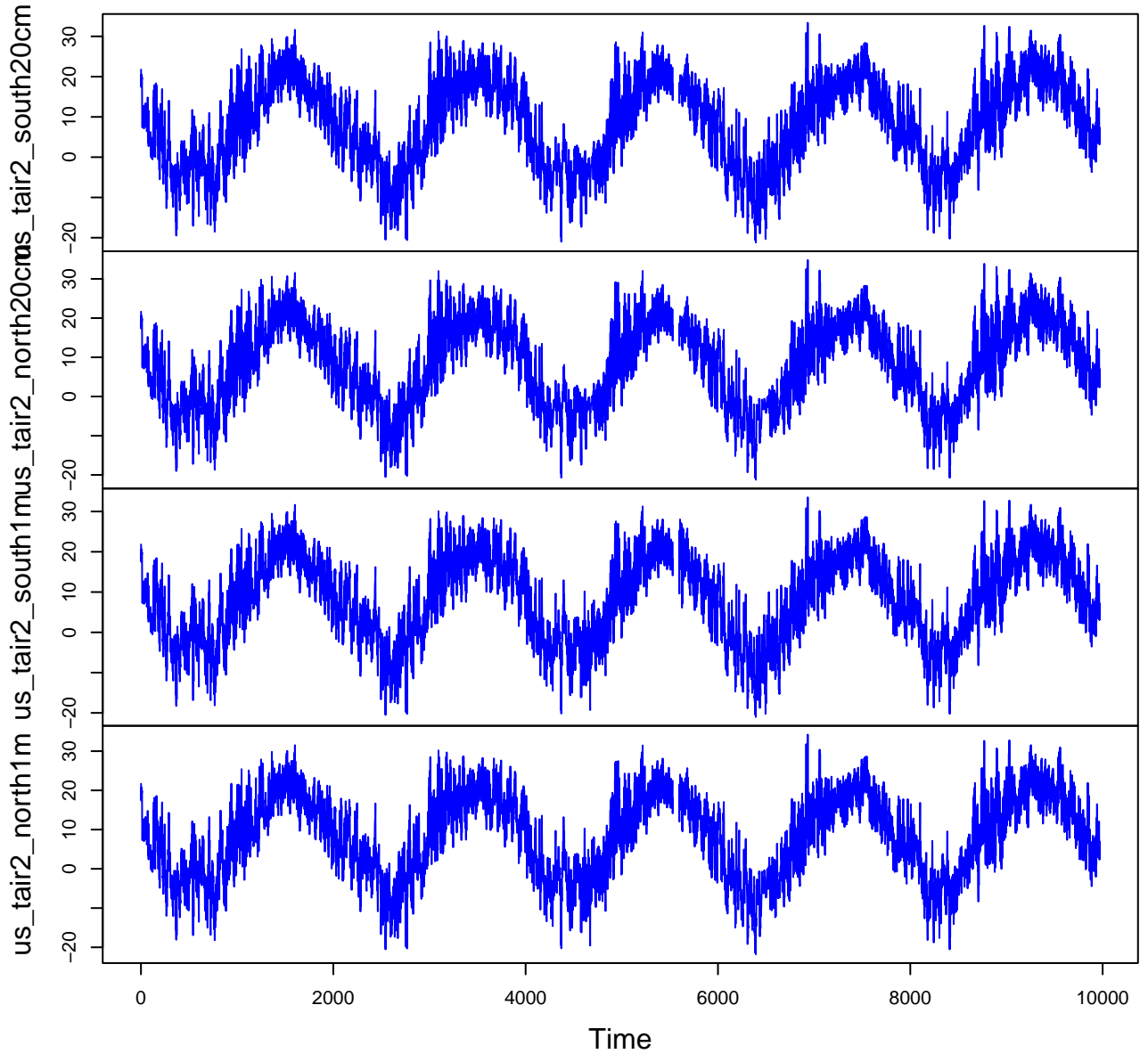
HF206-04 Plot 6



HF206-04 Plot 7



HF206-04 Plot 8



HF206-04 Plot 9

