

Harvard Forest Data Archive HF300-05

Data File:

Name = hf300-05-daily-m.csv

Description = daily (metric)

Rows = 22646 Columns = 9

MD5 checksum = 052ec87791d55b3aa6ba409552a7e0b1

Variables:

date = date

airt = average air temperature (celsius)

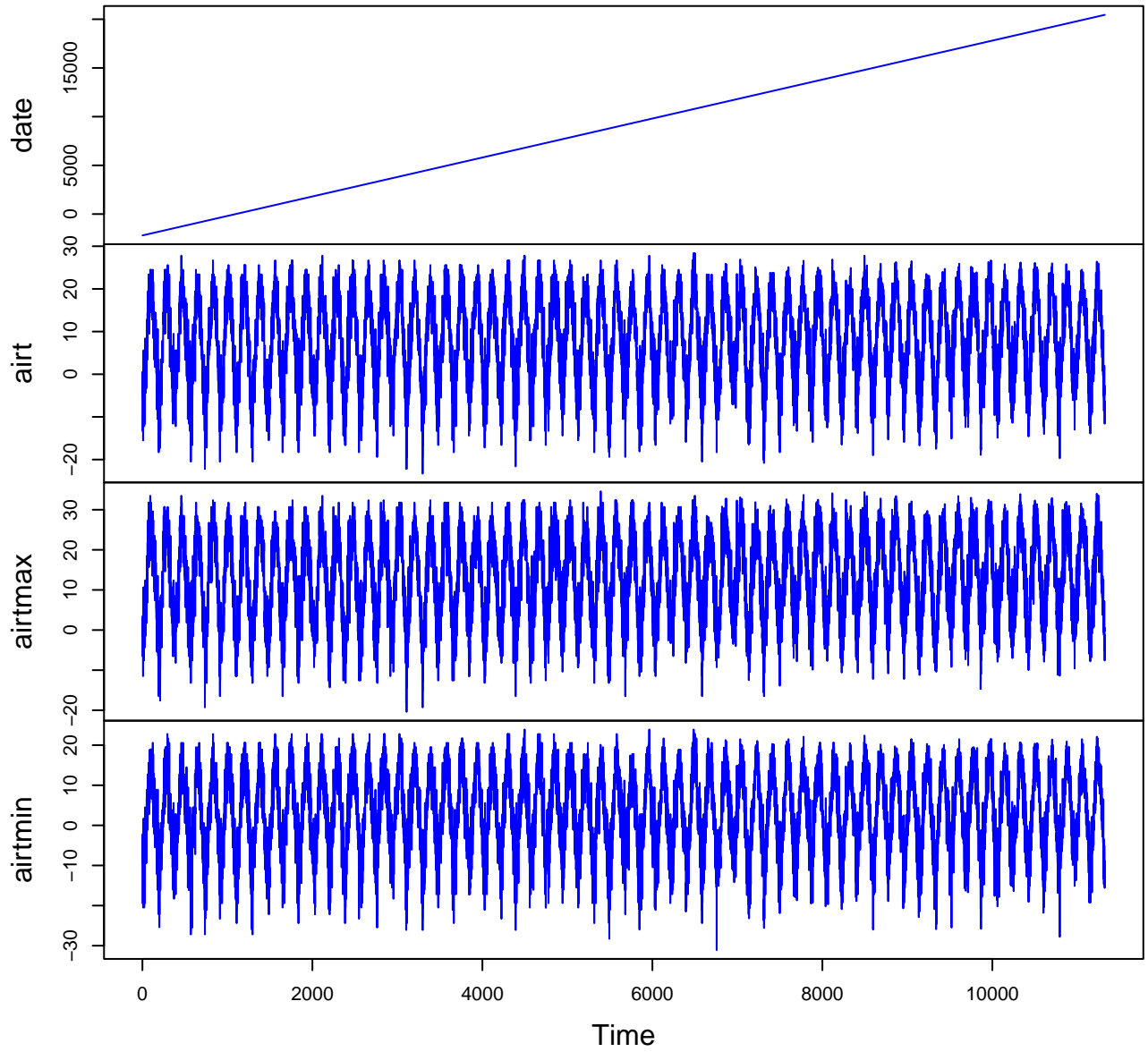
airtmax = maximum air temperature (celsius)

airtmin = minimum air temperature (celsius)

prec = total precipitation. Includes water equivalent of snow
(millimeter)

Variable	Min	Median	Mean	Max	NAs
date	1964-01-01	1994-12-31	1994-12-31	2025-12-31	0
airt	-23.300	8.400	8.082	28.400	0
airtmax	-20.400	13.500	13.127	35.700	0
airtmin	-31.100	3.800	3.275	25.600	0
prec	0.000	0.000	3.035	113.800	0

HF300-05 Plot 1



HF300-05 Plot 2

