

Harvard Forest Data Archive HF300-06

Data File:

Name = hf300-06-daily-e.csv

Description = daily (english)

Rows = 22646 Columns = 9

MD5 checksum = 86916975ae92c20e6b1a862673a382e3

Variables:

date = date

airt = average air temperature (fahrenheit)

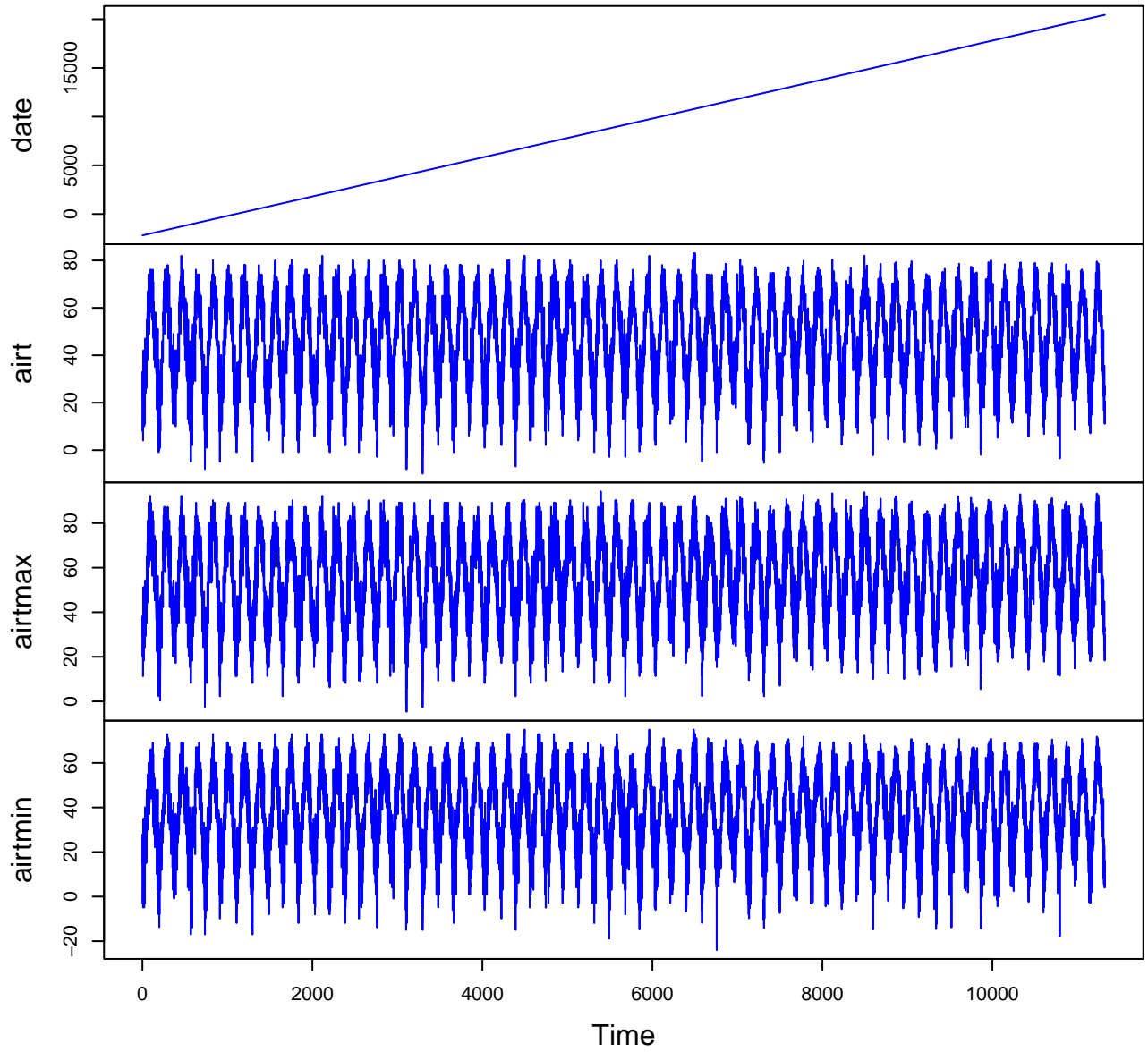
airtmax = maximum air temperature (fahrenheit)

airtmin = minimum air temperature (fahrenheit)

prec = total precipitation. Includes water equivalent of snow
(inch)

Variable	Min	Median	Mean	Max	NAs
date	1964-01-01	1994-12-31	1994-12-31	2025-12-31	0
airt	-9.900	47.100	46.549	83.100	0
airtmax	-4.700	56.300	55.627	96.300	0
airtmin	-24.000	38.800	37.892	78.100	0
prec	0.000	0.000	0.120	4.480	0

HF300-06 Plot 1



HF300-06 Plot 2

