

Harvard Forest Data Archive HF324-05

Data File:

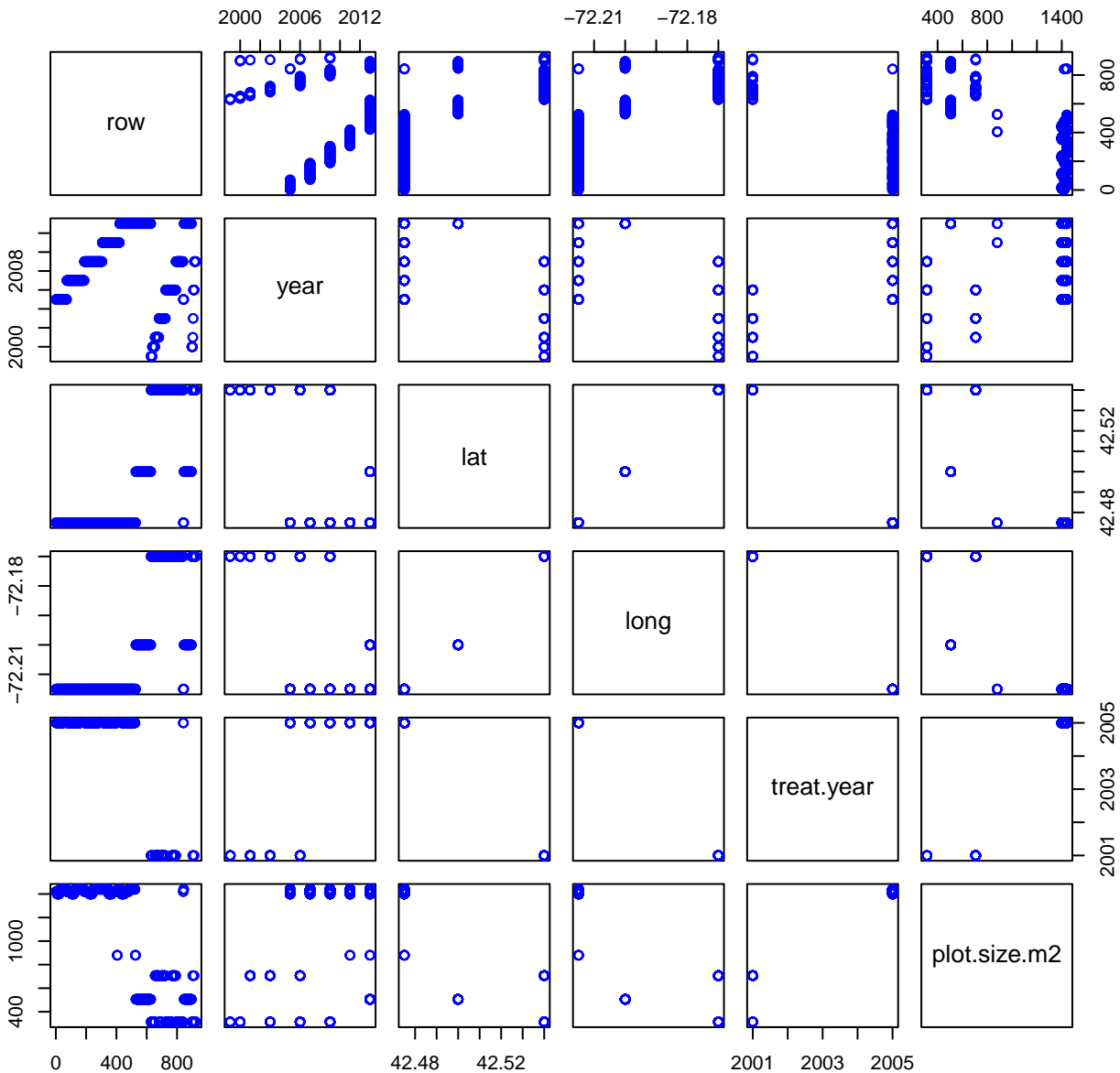
Name = hf324-05-snag.csv  
Description = standing dead wood  
Rows = 5539 Columns = 33  
MD5 checksum = e612d3eca7e8872833aa420317aaffb9

Variables:

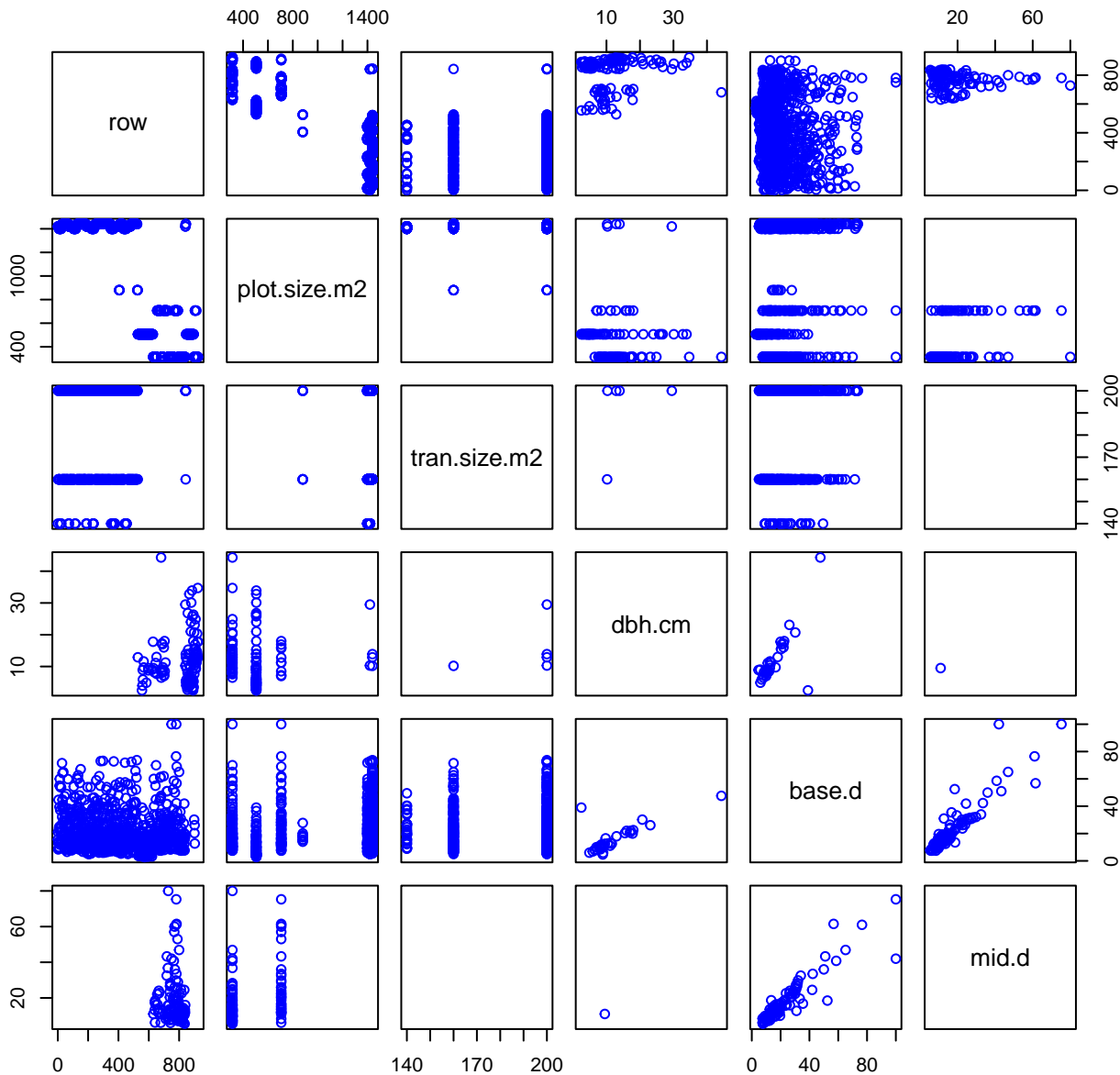
year = year of measurement  
lat = latitude (degree)  
long = longitude (degree)  
treat.year = if experimental, treatment year  
plot.size.m2 = area of plot (m2) in which snags and stumps were  
sampled. This is a total  
area per plot for plots in which more than one  
strip plot was measured  
(hf-here) (squareMeter)  
tran.size.m2 = transect area (m2) when more than one strip-transect  
per plot  
(hf-here) (squareMeter)  
dbh.cm = minimum diameter of wood included in survey (centimeter)  
base.d = diameter at the base of the down wood piece (plot-based  
method) (centimeter)  
mid.d = diameter at the midpoint of the down wood piece (plot-based  
method) (centimeter)  
top.d = diameter at the top of the down wood piece (plot-based  
method) (centimeter)  
height.m = height of wood piece (meter)  
dens = density of the wood, based on its species and decay  
class  
(gramsPerCubicCentimeter)  
volume = calculated volume based on method specified (cubicMeter)  
mass = calculated mass, based on volume and density  
(gramsPerSquareMeter)  
vol.area = volume per unit area (divide by plot.size.m2)  
(litersPerSquareMeter)  
biomass = for method 4 only, mass of snag calculated by  
allometry  
(kilogram)

Variable	Min	Median	Mean	Max	NAs
year	1999.000	2009.000	2008.652	2013.000	0
lat	42.475	42.475	42.496	42.540	0
long	-72.215	-72.215	-72.201	-72.170	0
treat.year	2001.000	2005.000	2004.221	2005.000	2592
plot.size.m2	314.159	1400.000	1018.583	1440.000	0
tran.size.m2	140.000	200.000	180.207	200.000	2346
dbh.cm	2.500	10.200	12.572	78.500	4808
base.d	0.400	17.847	22.317	110.000	576
mid.d	4.000	13.400	17.804	80.000	4852
top.d	0.300	8.000	12.188	94.868	932
height.m	-9.000	1.205	4.300	30.600	441
dens	0.260	0.360	0.373	0.580	0
volume	-1.641	0.049	0.309	13.009	18
mass	-330.482	20.671	127.542	5532.757	18
vol.area	-0.001	0.000	0.000	0.015	18
biomass	496	22374	77915	2800958	5037

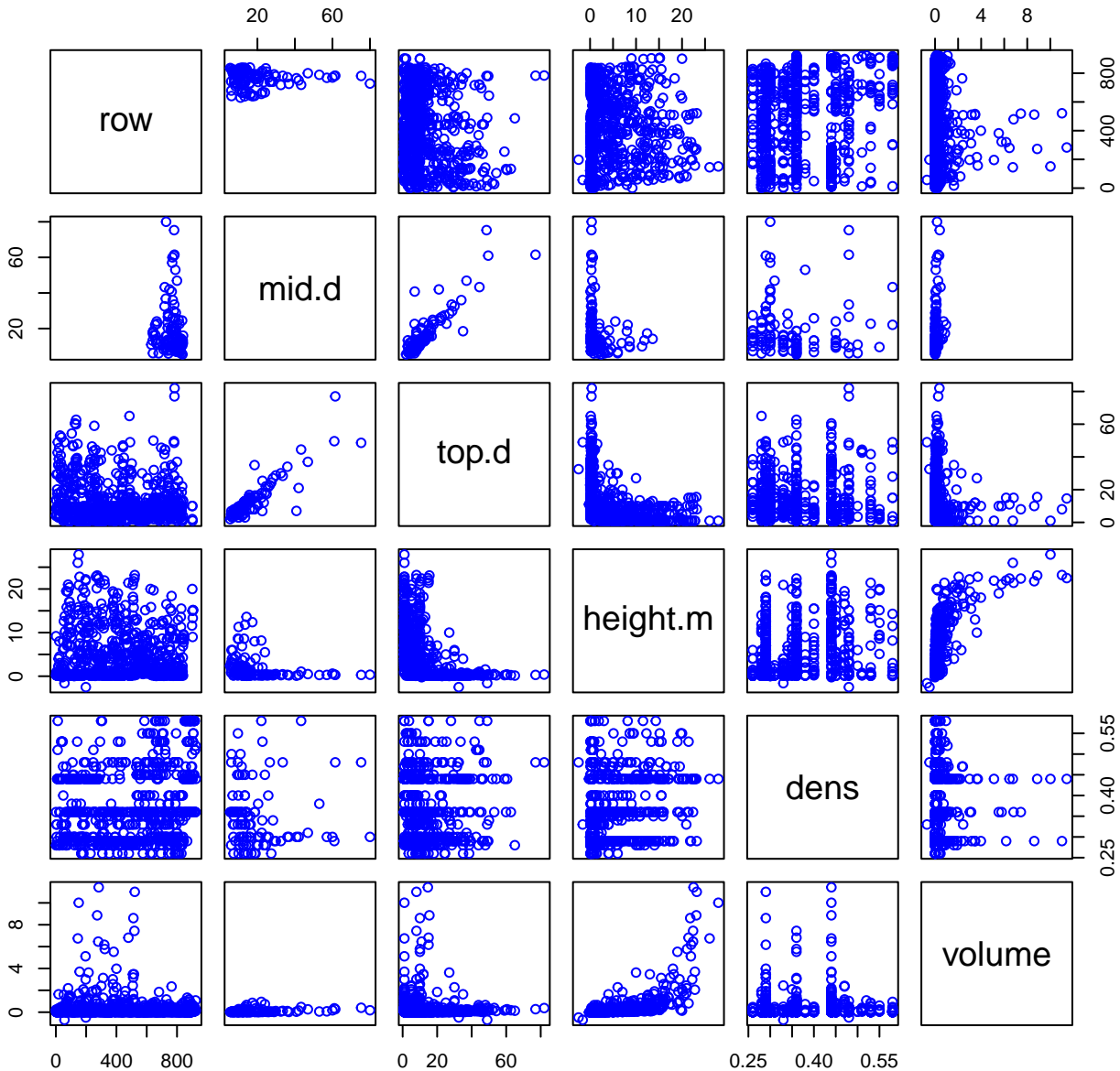
# HF324-05 Plot 1



# HF324-05 Plot 2



# HF324-05 Plot 3



# HF324-05 Plot 4

