

Harvard Forest Data Archive HF001-07

Data File:

Name = hf001-07-daily-e.csv
Description = daily (english) since 2001
Rows = 6898 Columns = 46
MD5 checksum = 54f830118d610fd0690405a9bb77ec98

Variables:

date = date
jd = Julian day (nominalDay)
airt = average air temperature. Average of 1-second measurements.
(fahrenheit)
airtmax = maximum air temperature. Maximum of 1-second measurements.
(fahrenheit)
airtmin = minimum air temperature. Minimum of 1-second measurements.
(fahrenheit)
rh = average relative humidity. Average of 1-second measurements.
(percent) (number)
rhmax = maximum relative humidity. Maximum of 1-second measurements.
(percent) (number)
rhmin = minimum relative humidity. Minimum of 1-second measurements.
(percent) (number)
dewp = average dew point. Average of 1-second values calculated from
air temperature and relative humidity. (fahrenheit)
dewpmax = maximum dew point. Maximum of 1-second values calculated
from air temperature and relative humidity. (fahrenheit)
dewpmin = minimum dew point. Minimum of 1-second values calculated
from air temperature and relative humidity. (fahrenheit)
prec = Total precipitation. Includes water equivalent of snow. Total
value for 1-day period. Measured in increments of 0.01 inch. (inch)
slrt = Total global solar radiation. Total value for 1-day period.
(megajoulePerMeterSquared)
part = total photosynthetically active radiation. Total value for
1-day period. (molePerMeterSquared)
netr = average net radiation. Includes short and long wave. Average
of 1-second measurements. Corrected for wind speeds above 5 m/s
using Cambell Scientific equation. (wattPerMeterSquared)
bar = average barometric pressure. Corrected for elevation. Average
of hourly measurements. (inchOfMercury)
wspd = average horizontal scalar wind speed. Average of 1-second
measurements. (milesPerHour)
wres = average horizontal resultant vector wind speed. Vector
average of 1-second measurements. (milesPerHour)
wdir = average horizontal vector wind direction. Vector average of
1-second measurements. Measured in degrees clockwise from true north.
(degree)
wdev = standard deviation of wind direction. Calculated from
1-second measurements using Campbell Scientific equation. (degree)

gspd = Gust speed. Maximum of 1-second measurements. (milesPerHour)

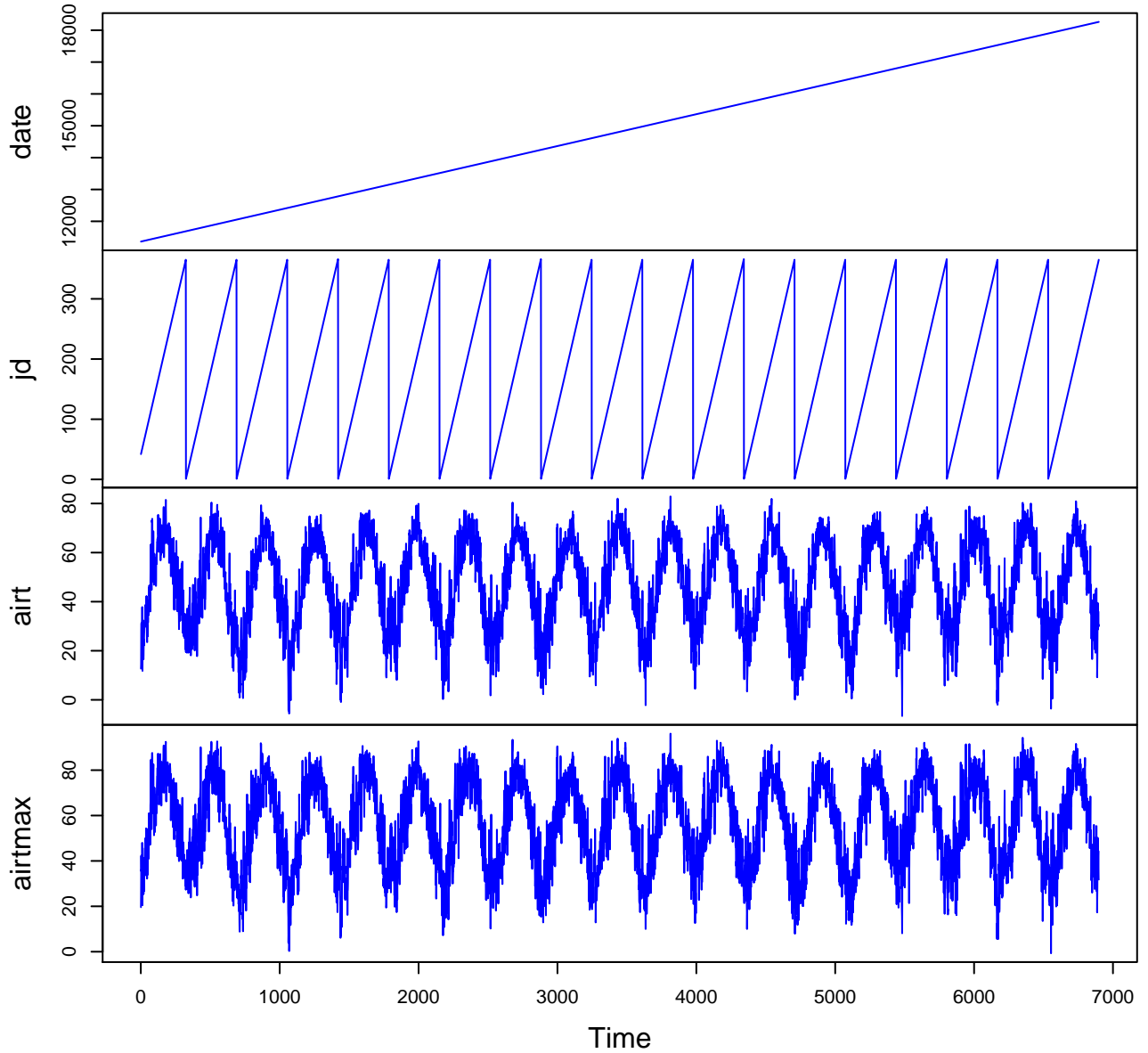
s10t = average soil temperature at 10cm depth. Average of 1-second measurements. (fahrenheit)

s10tmax = maximum soil temperature at 10cm depth. Maximum of 1-second measurements. (fahrenheit)

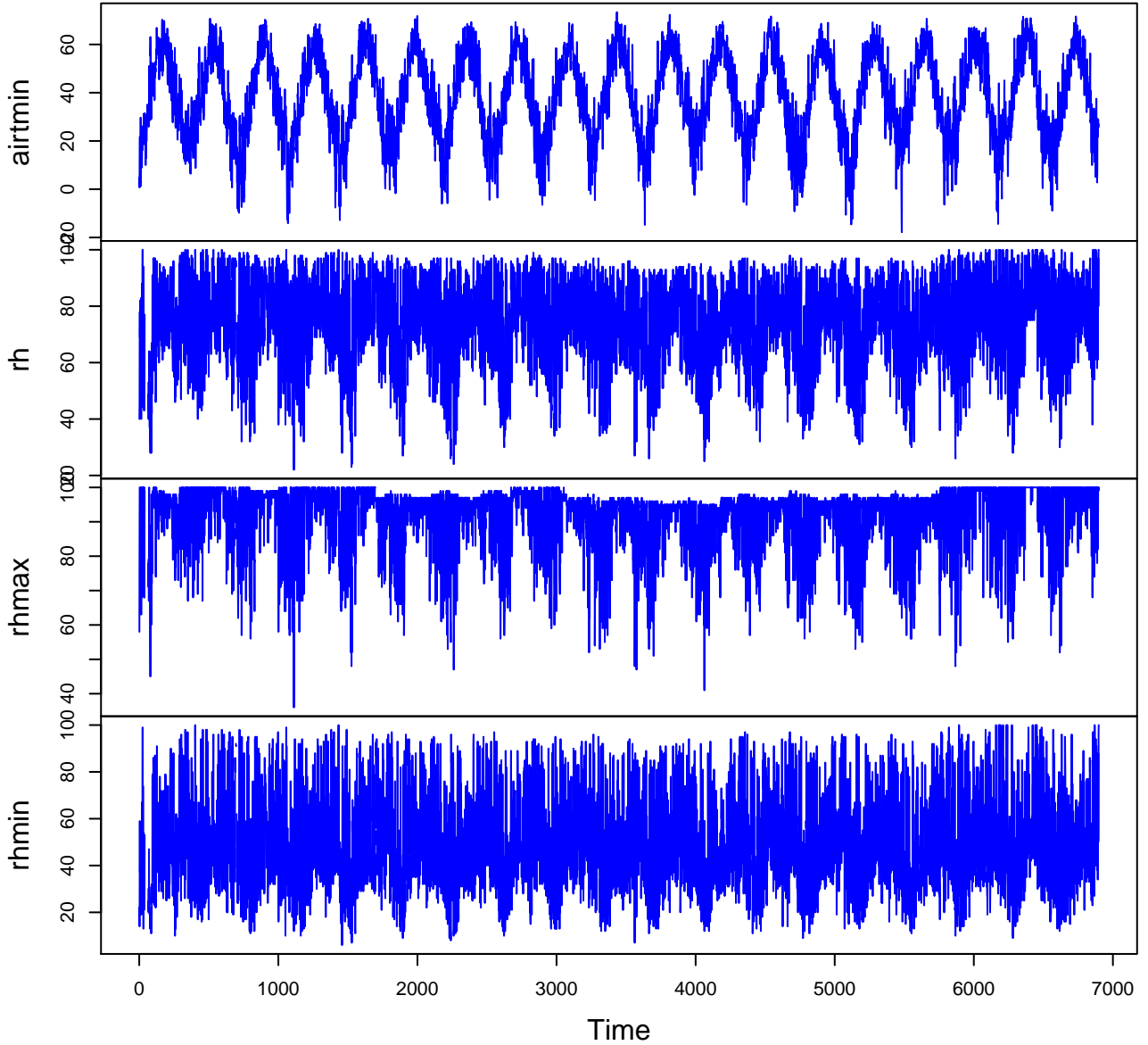
s10tmin = minimum soil temperature at 10cm depth. Minimum of 1-second measurements. (fahrenheit)

Variable	Min	Median	Mean	Max	NAs
date	2001-02-11	2010-07-22	2010-07-22	2019-12-31	0
jd	1.000	184.000	184.069	366.000	0
airt	-6.600	48.200	47.050	82.900	0
airtmax	-0.700	58.100	56.787	96.100	0
airtmin	-17.800	38.700	38.075	73.400	0
rh	22.000	74.000	72.951	100.000	43
rhmax	36.000	95.000	91.717	100.000	43
rhmin	6.000	45.000	47.804	100.000	43
dewp	-23.400	38.600	37.719	72.800	43
dewpmax	-16.000	46.900	45.150	79.700	43
dewpmin	-30.800	30.900	30.066	70.600	43
prec	0.000	0.000	0.133	4.480	0
slrt	0.000	11.500	12.885	31.600	15
part	0.000	22.600	25.529	68.100	1038
netr	-99.200	32.400	51.124	224.000	1037
bar	29.000	29.970	29.948	30.680	10
wspd	0.000	3.100	3.581	12.100	13
wres	0.000	2.200	2.516	11.000	14
wdir	0.000	224.000	209.006	360.000	14
wdev	0.000	42.000	44.092	79.000	14
gspd	0.000	18.300	19.583	52.400	13
s10t	30.700	51.600	51.967	78.600	98
s10tmax	31.100	53.500	53.409	85.800	98
s10tmin	30.400	50.200	50.648	76.100	98

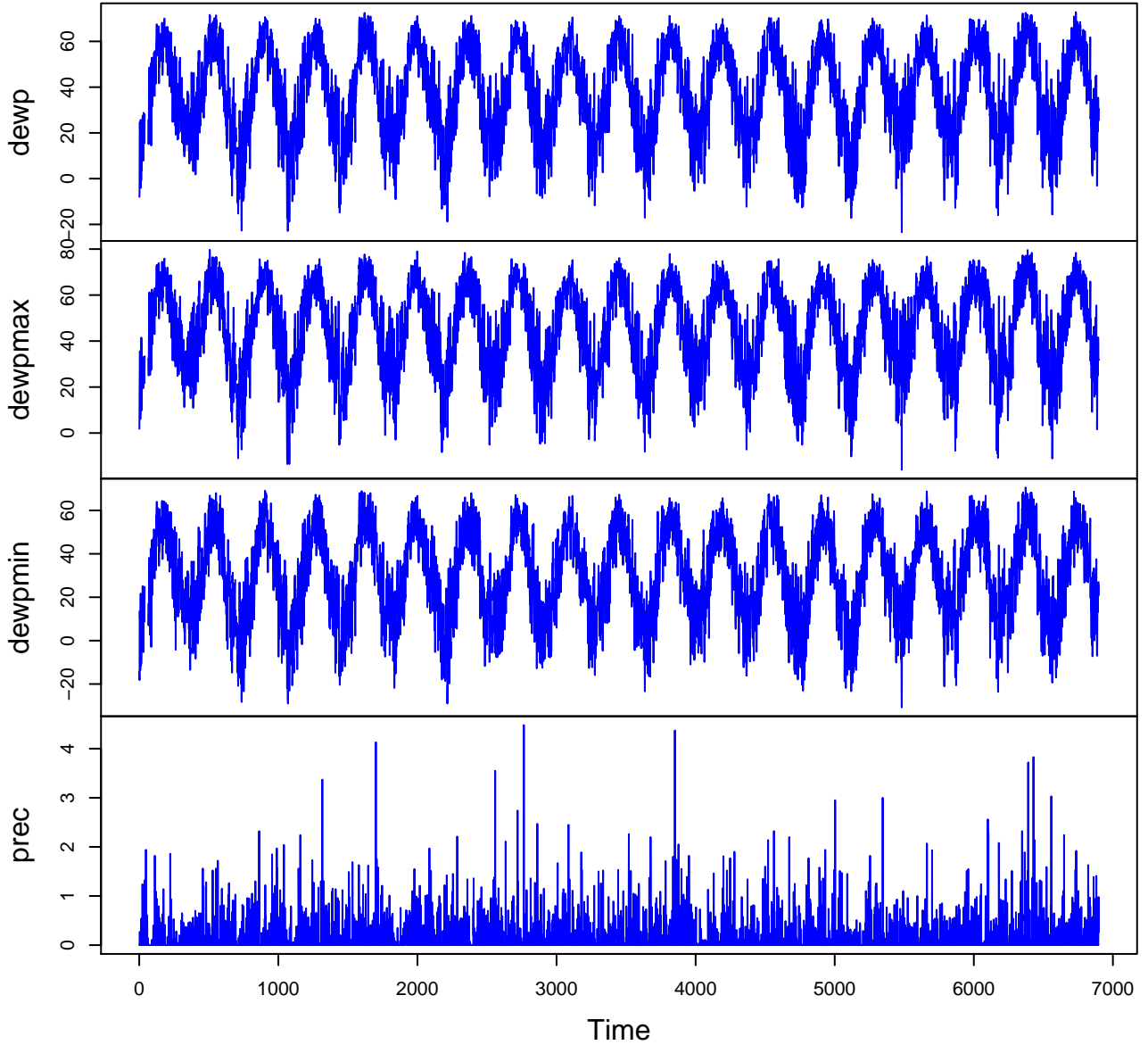
HF001-07 Plot 1



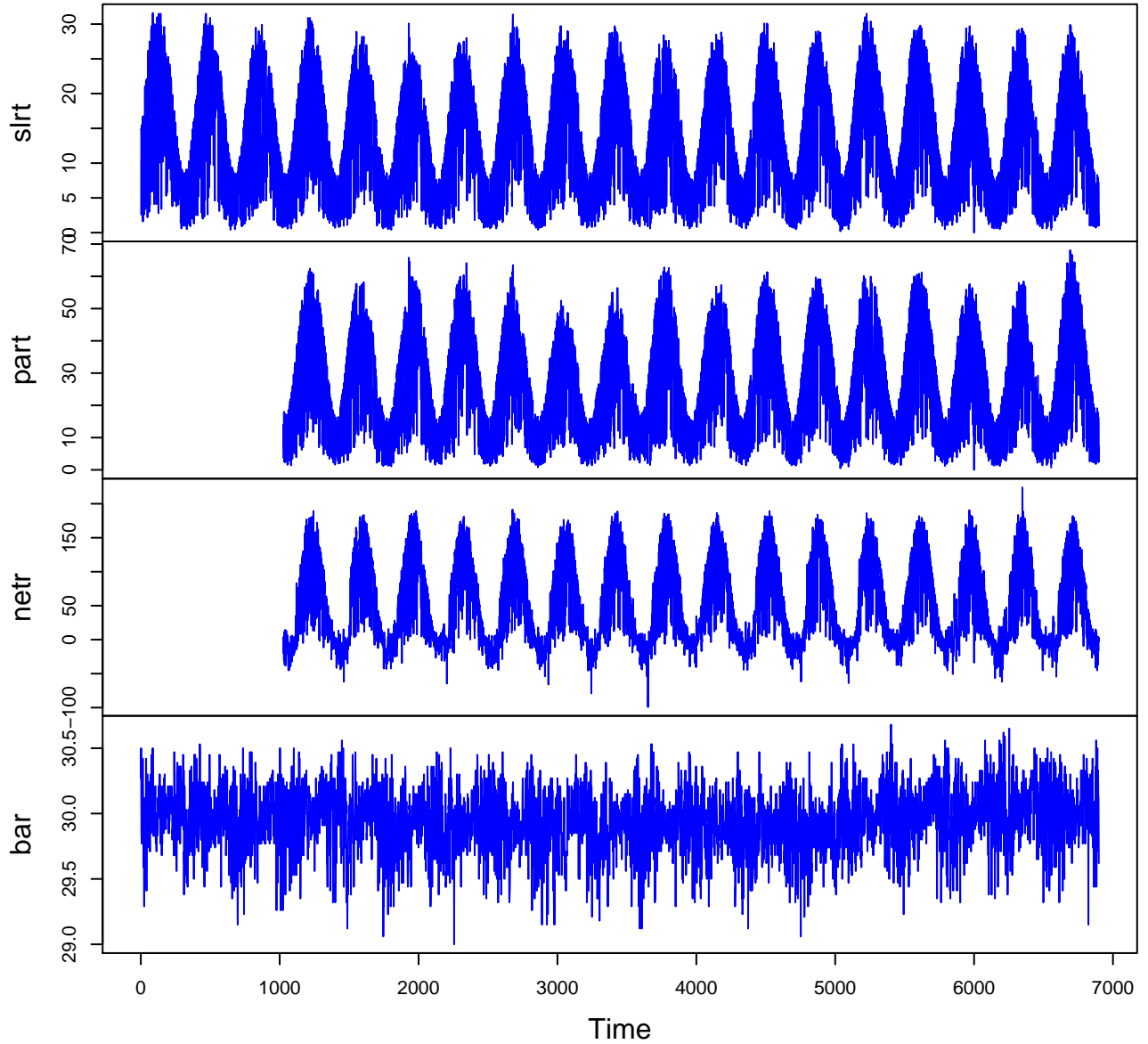
HF001-07 Plot 2



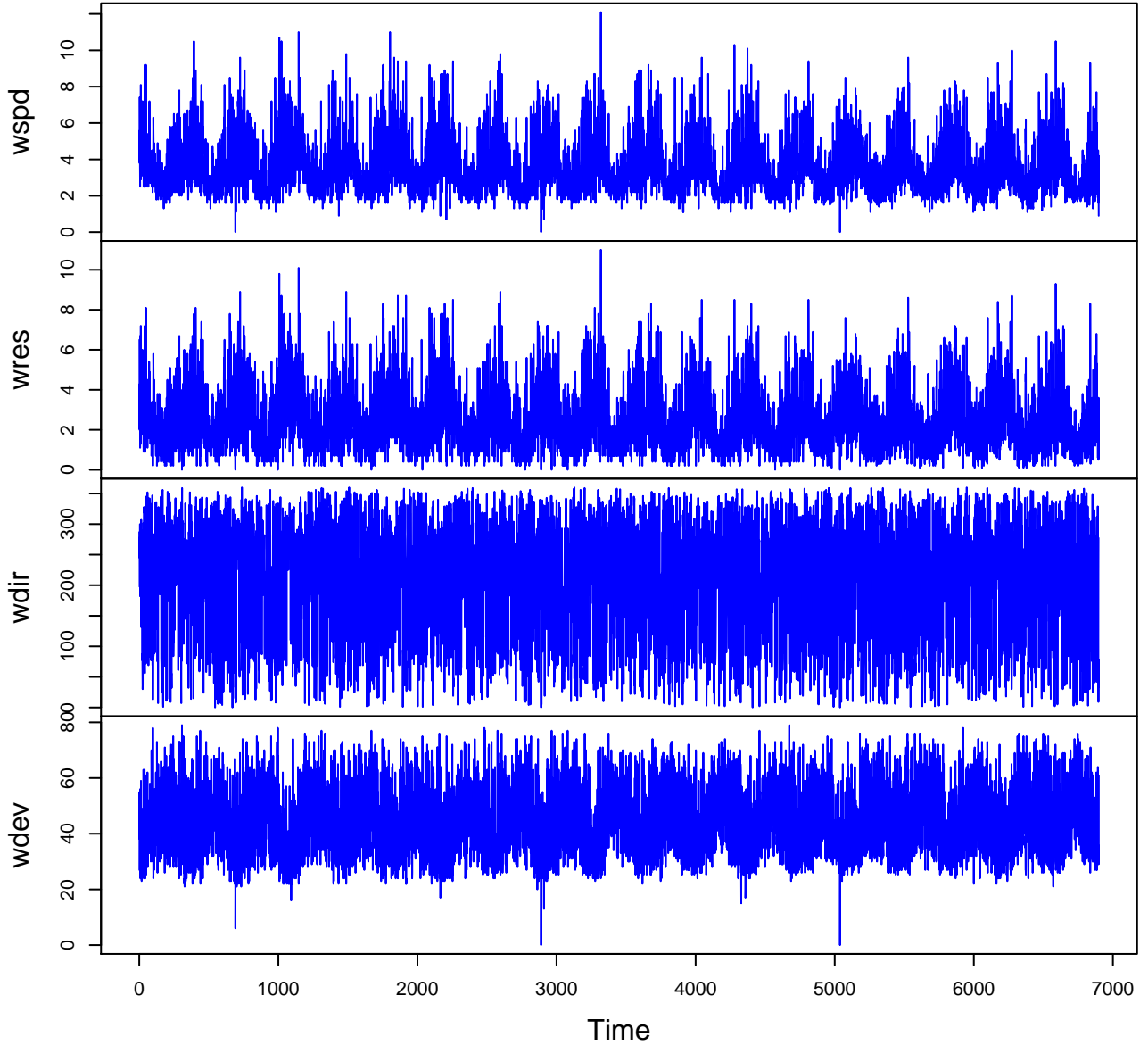
HF001-07 Plot 3



HF001-07 Plot 4



HF001-07 Plot 5



HF001-07 Plot 6

