

Harvard Forest Data Archive HF070-04

Data File:

Name = hf070-04-15min.csv

Description = 15-minute

Rows = 456960 Columns = 36

MD5 checksum = 1b2ab72ef9d8d91841bde3422ed1a161

Variables:

datetime = date and time at end of sampling period

jd = Julian day (nominalDay)

nb.stg = stage at Nelson Big Weir (centimeter)

nl.stg = stage at Nelson Little Weir (centimeter)

bl.stg = stage at Bigelow Lower Pipe (centimeter)

bu.stg = stage at Bigelow Upper Pipe (centimeter)

bgs.stg = stage at Black Gum Swamp (centimeter)

bvs.stg = stage at Beaver Swamp (centimeter)

nb.dis = discharge at Nelson Big Weir (litersPerSecond)

nl.dis = discharge at Nelson Little Weir (litersPerSecond)

nt.dis = total discharge from Nelson Weirs (litersPerSecond)

bl.dis = discharge from Bigelow Lower Pipe (litersPerSecond)

bu.dis = discharge from Bigelow Upper Pipe (litersPerSecond)

nb.wt = water temperature at Nelson Big Weir (celsius)

nl.wt = water temperature at Nelson Little Weir (celsius)

bl.wt = water temperature at Bigelow Lower Pipe (celsius)

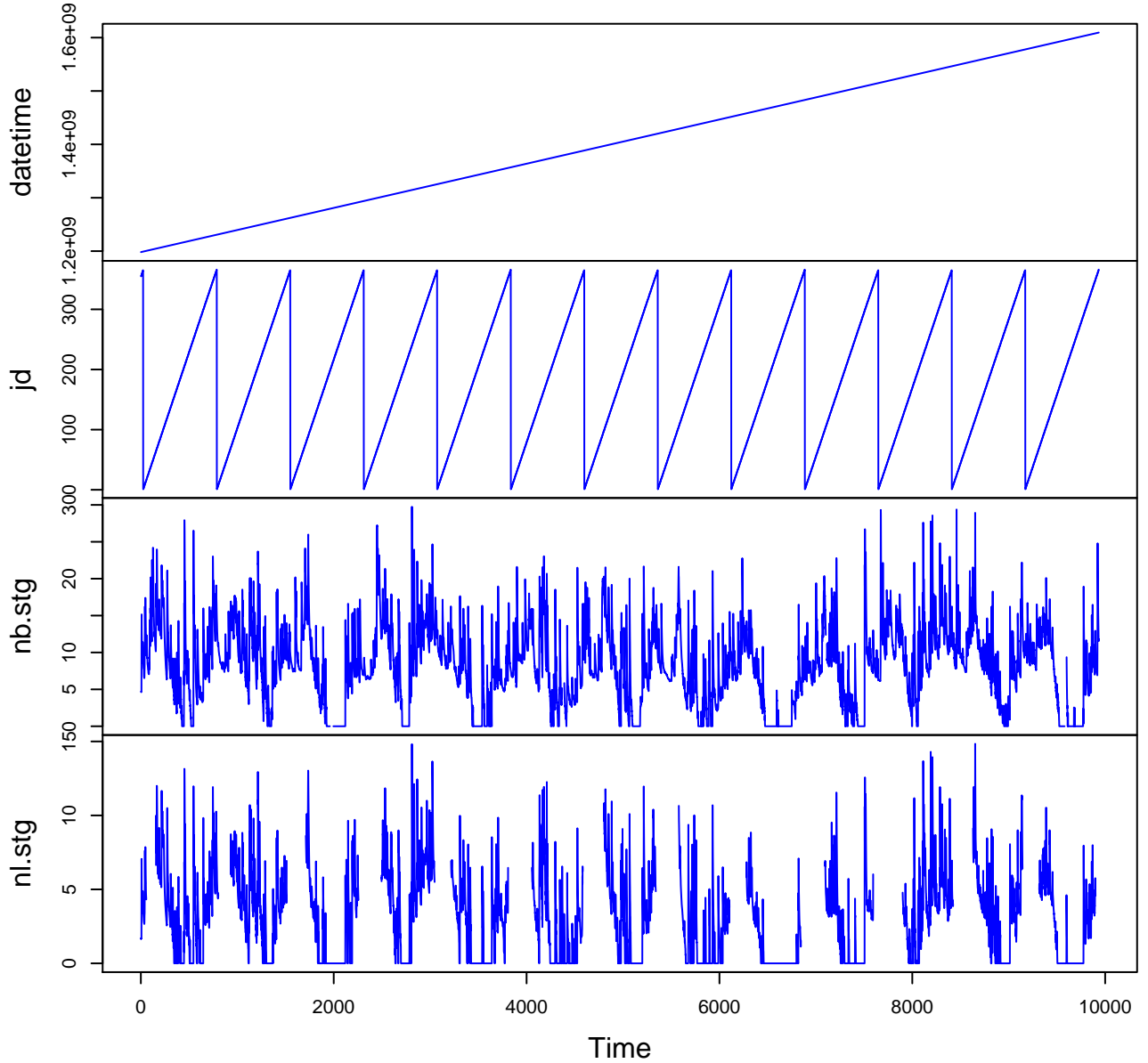
bu.wt = water temperature at Bigelow Upper Pipe (celsius)

bgs.wt = water temperature at Black Gum Swamp (celsius)

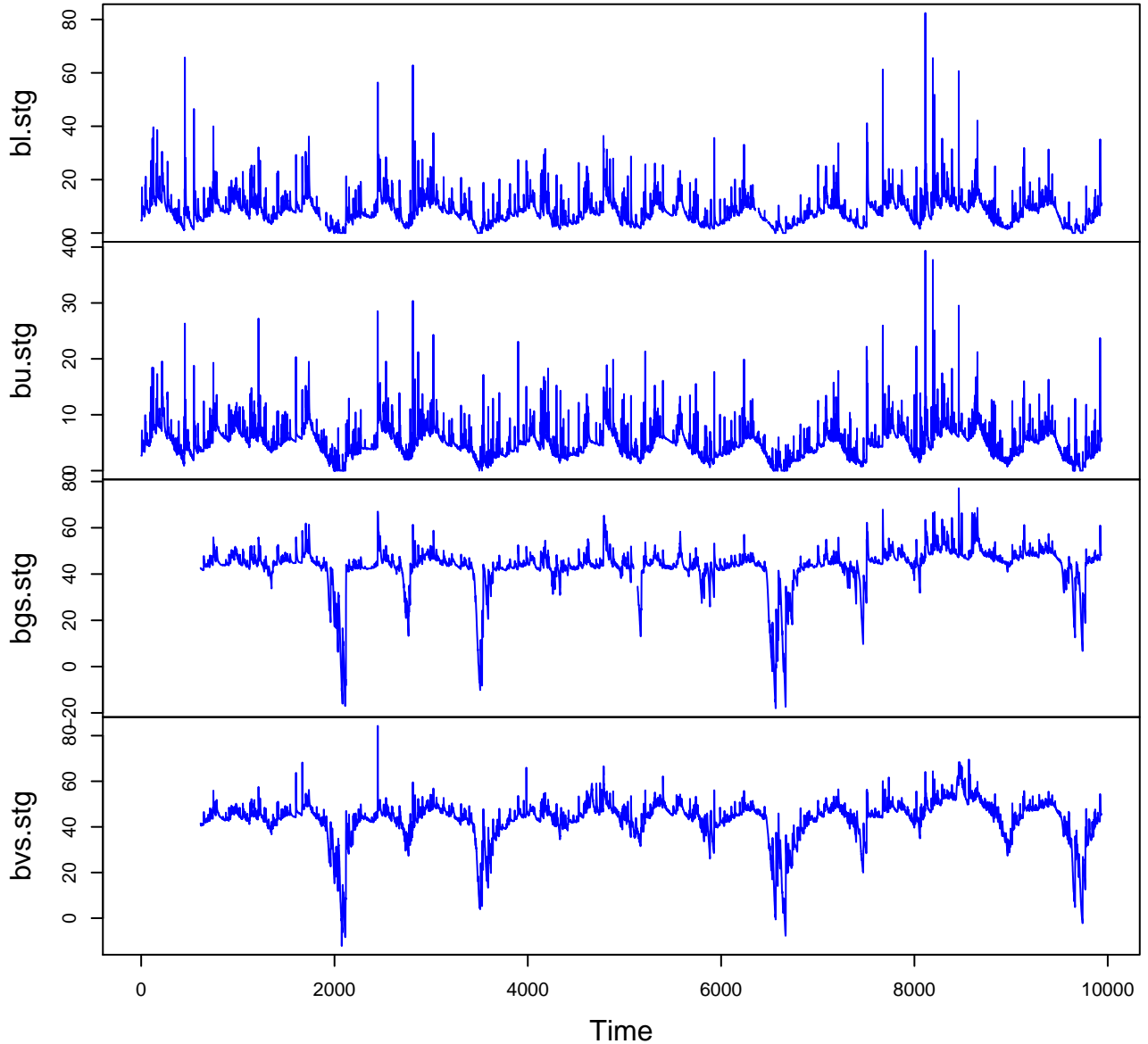
bvs.wt = water temperature at Beaver Swamp (celsius)

Variable	Min	Median	Mean	Max	NAs
datetime	2007-12-21T00:15		2021-01-01T00:00		0
jd	1.000	184.000	183.563	368.000	0
nb.stg	0.000	8.130	8.226	31.010	5194
nl.stg	0.000	2.890	2.961	16.150	123162
bl.stg	0.000	7.880	8.425	82.420	5234
bu.stg	0.000	4.730	5.014	52.020	434
bgs.stg	-18.340	44.470	43.046	80.780	30166
bvs.stg	-19.380	44.740	43.087	91.230	28672
nb.dis	0.000	4.490	8.213	170.880	4203
nl.dis	-0.010	0.430	1.103	48.270	557
nt.dis	0.000	4.930	9.321	219.140	4272
bl.dis	0.000	7.570	12.869	957.710	5204
bu.dis	0.000	2.330	4.109	821.780	418
nb.wt	-0.150	5.610	6.683	20.420	63610
nl.wt	-0.120	8.650	8.691	20.770	236983
bl.wt	-0.030	8.430	8.418	19.990	8159
bu.wt	0.190	7.650	7.992	17.960	10068
bgs.wt	1.900	7.190	7.631	15.470	30134
bvs.wt	3.130	8.140	8.593	16.070	28670

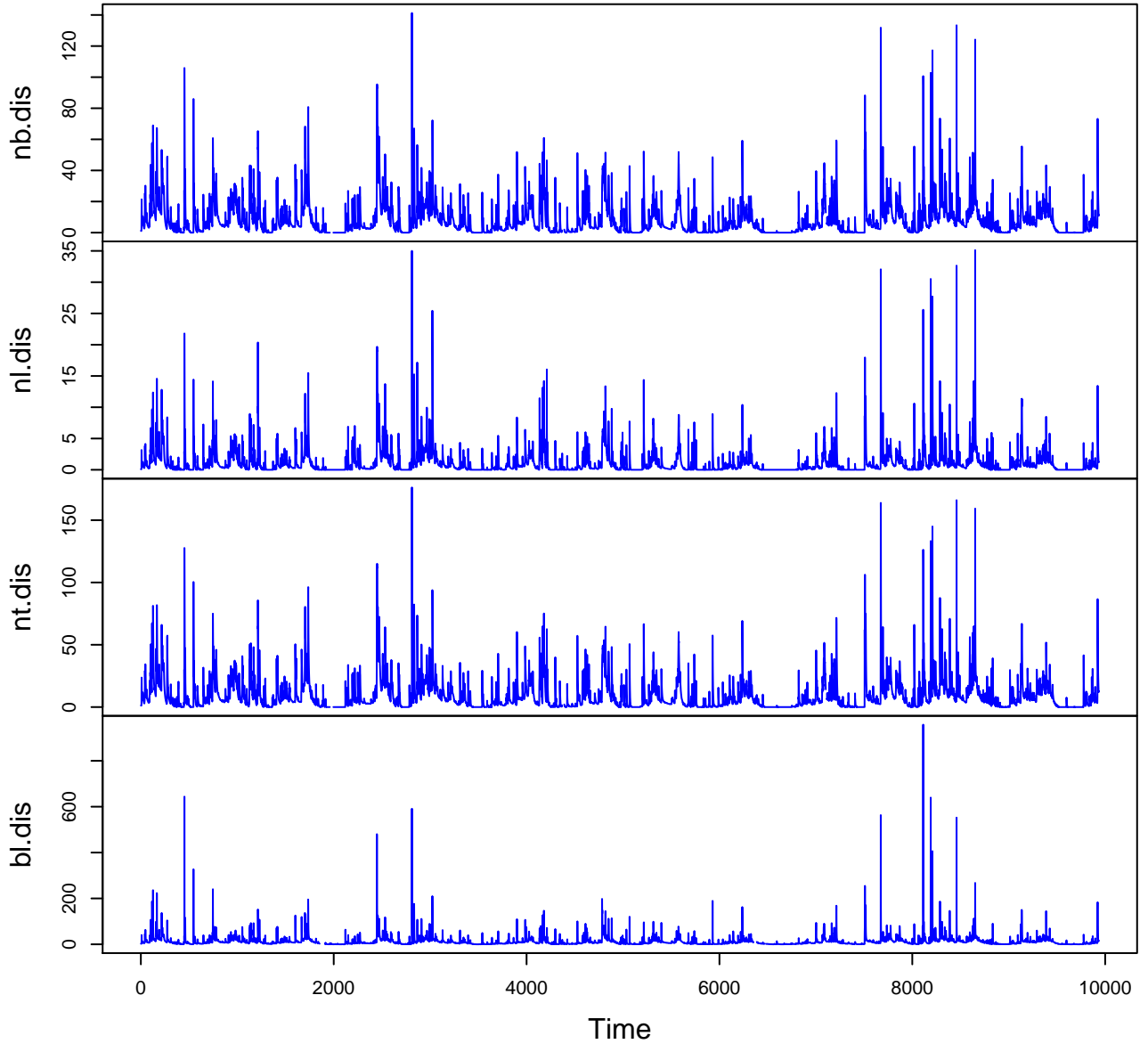
HF070-04 Plot 1



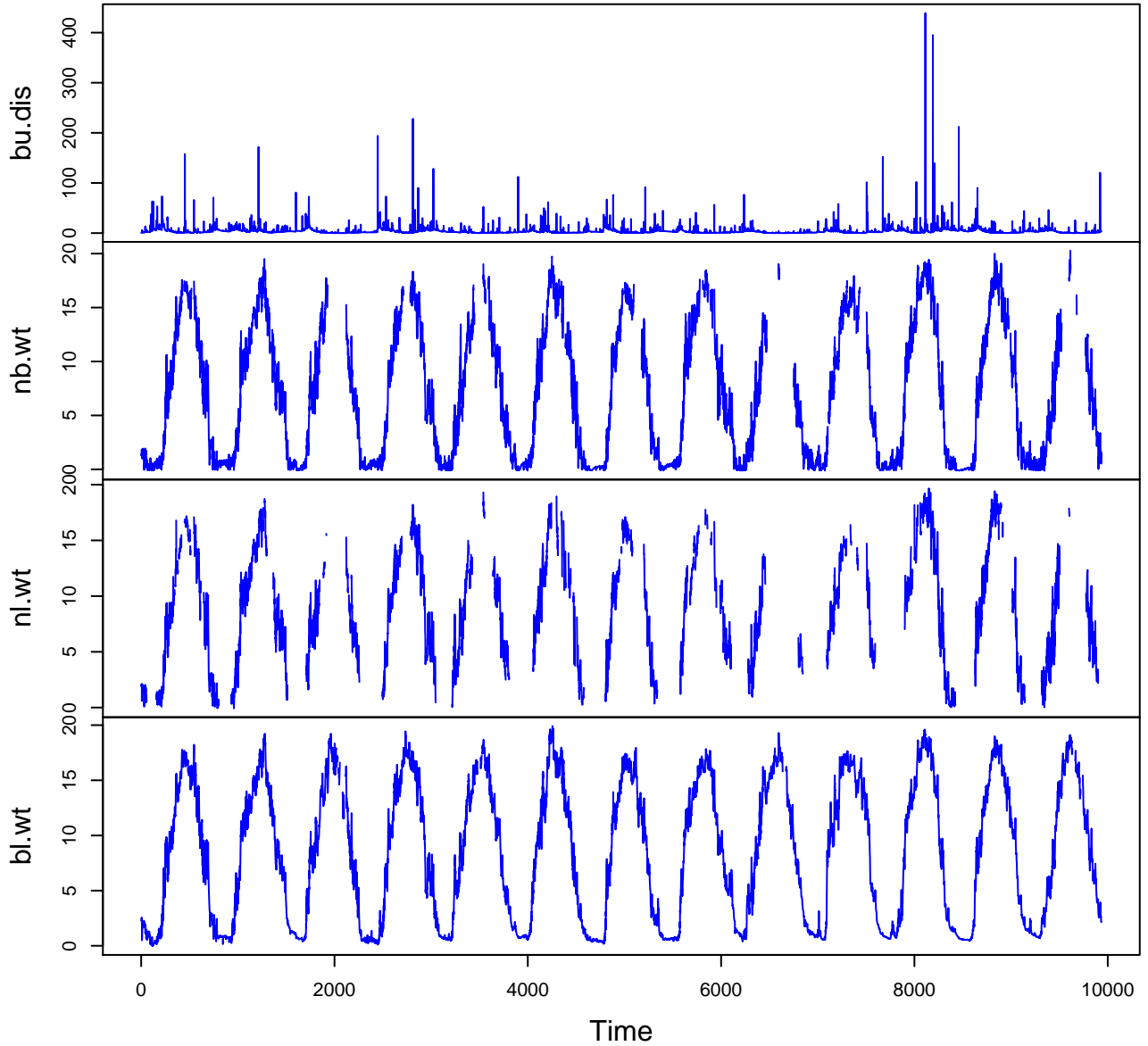
HF070-04 Plot 2



HF070-04 Plot 3



HF070-04 Plot 4



HF070-04 Plot 5

